

TACAN RWY 32

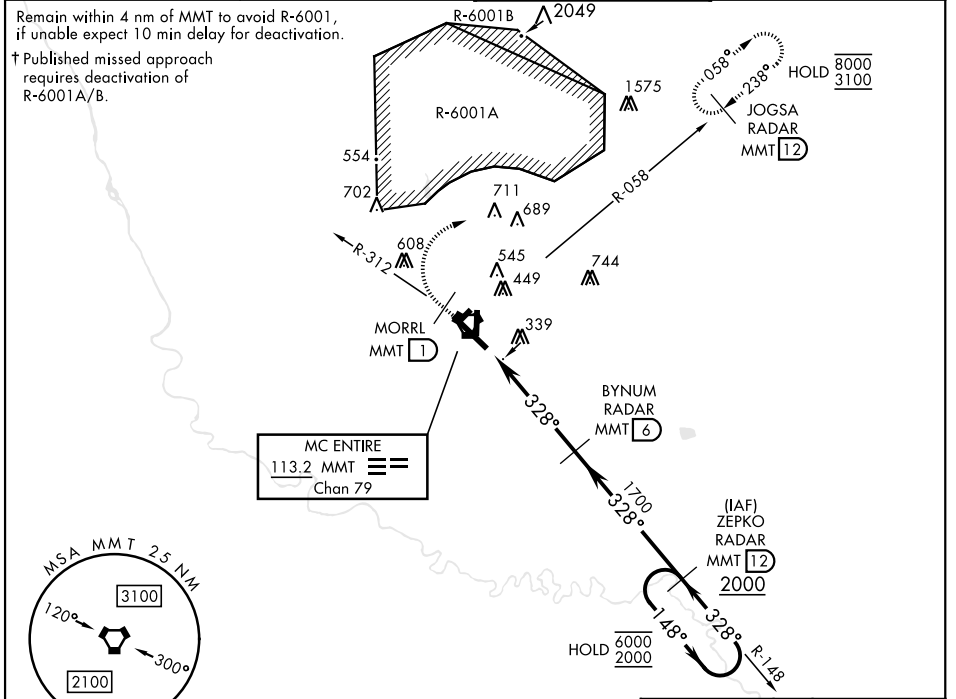
VORTAC MMT 113.2 Chan 79	APCH CRS 328°	Rwy Idg TDZE 243 Arprt Elev 254	[USAF]	MC ENTIRE JNGB (KMMT)
--	-------------------------	---	--------	-----------------------

▽ * When ALS inop, increase CAT AB RVR to 55, vis to 1 mile, CAT CDE RVR to 60, vis to 1½ miles.

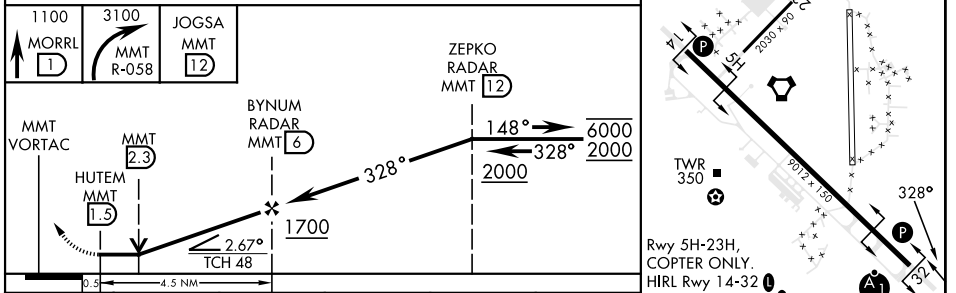
ALSF-1

 † MISSED APPROACH: Climb to 1100 direct MORRL/1 DME then climbing right turn to 3100 intercept MMT R-058 direct JOGSA/12 DME and hold.

ATIS ★ 327.05	SHAW APP CON 125.4 318.1	TOWER ★ 132.4 (CTAF) 253.5	GND CON 127.625 226.675
-------------------------	------------------------------------	--------------------------------------	-----------------------------------



ELEV 254	TDZE 243
-----------------	-----------------



EMERG SAFE ALT 100 NM 3800	<table border="1"> <tr> <td>1100 MORRL 1</td> <td>3100 MMT R-058</td> <td>JOGSA MMT 12</td> <td>ZEPKO RADAR MMT 12</td> <td colspan="2"></td> </tr> </table>					1100 MORRL 1	3100 MMT R-058	JOGSA MMT 12	ZEPKO RADAR MMT 12		
1100 MORRL 1	3100 MMT R-058	JOGSA MMT 12	ZEPKO RADAR MMT 12								
MMT VORTAC	MMT 2.3	BYNUM RADAR MMT 6	148°	6000	2000						
HUTEM MMT 1.5	1700	328°	2000	328°	2000						
3.5	4.5 NM	2.67°	TCH 48								
CATEGORY	A	B	C	D	E						
S-32 *	640/24	397 (400-½)	640/40	397 (400-¾)							
CIRCLING	740-1 486 (500-1)	840-1 586 (600-1)	880-1¾ 626 (700-1¾)	940-2¼ 686 (700-2¼)	1020-2¾ 766 (800-2¾)						
FAF to MAP 4.5 NM											
Knots											
60 90 120 150 180											
Min:Sec											
4:30 3:00 2:15 1:48 1:30											

TACAN RWY 32

SE-2, 28 NOV 2024 to 26 DEC 2024

SE-2, 28 NOV 2024 to 26 DEC 2024