

| | | | |
|--|------------------------|-----------------------------|---|
| WAAS CH 58115 W06A | APP CRS 058° | Rwy ldg TDZE Apt Elev | 9009 1051 1051 |
|--|------------------------|-----------------------------|---|

RNAV (GPS) RWY 6

SPRINGFIELD/BECKLEY MUNI (SGH)

RNP APCH - GPS

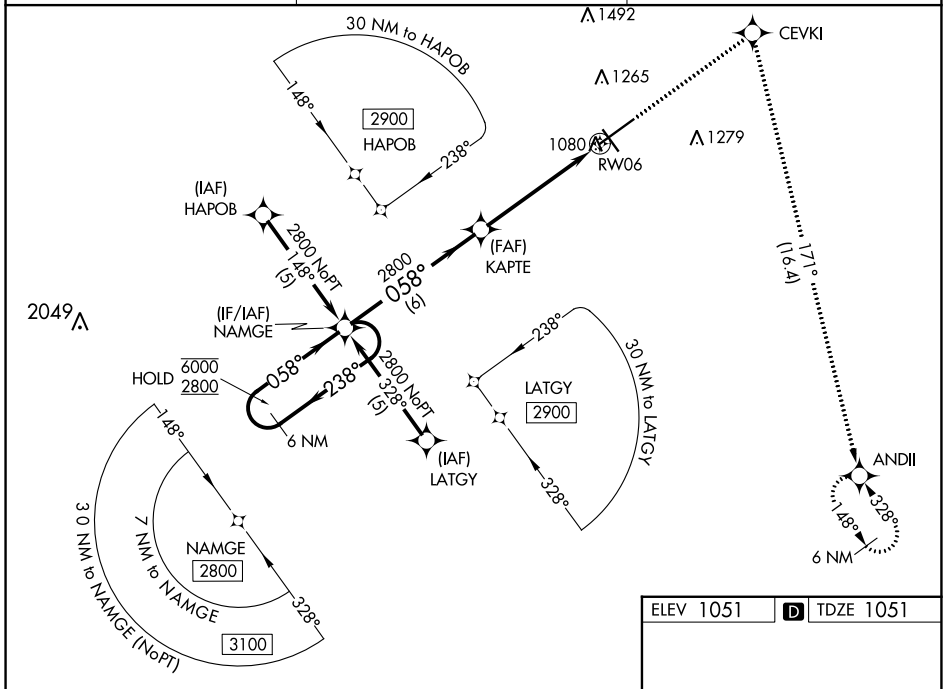
⚠ Rwy 6 helicopter visibility reduction below 3/4 SM NA.
For uncompensated Baro-VNAV systems, LNAV/VNAV NA below -17°C or above 54°C

MISSED APPROACH: Climb to 3000
direct CEVKI and right turn on track 171°
to ANDII and hold.

AWOS-3PT
134.975

COLUMBUS APP CON
118.85 269.275

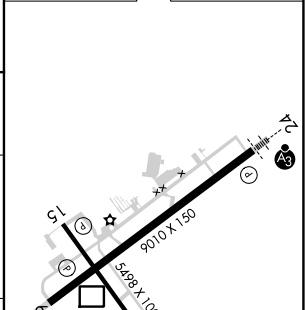
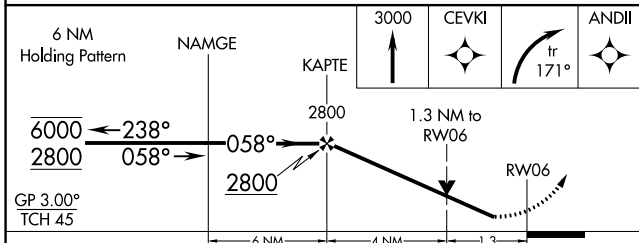
UNICOM
122.95 (CTAF) ①



EC-2, 28 NOV 2024 to 26 DEC 2024

EC-2, 28 NOV 2024 to 26 DEC 2024

ELEV 1051 **D** TDZE 1051



| CATEGORY | A | B | C | D |
|-------------------|-----------------------|-----------------------|-------------------------------|-----------------------|
| LPV DA | | 1354-7/8 | 303 (400-7/8) | |
| LNAV/VNAV DA | | 1429-1 | 378 (400-1) | |
| LNAV MDA | 1500-1 | 449 (500-1) | 1500-1 3/8 449 (500-1 3/8) | |
| C CIRCLING | 1500-1 449 (500-1) | 1580-1 529 (600-1) | 1580-1 1/2 529 (600-1 1/2) | 1620-2 569 (600-2) |

HIRL Rwy 6-24 ①
MIRL Rwy 15-33 ①
REIL Rws 6, 15 and 33 ①