

LOC I-MWH <b>109.5</b>	APP CRS <b>324°</b>	Rwy Idg <b>13492</b> TDZE <b>1167</b> Apt Elev <b>1189</b>
---------------------------	------------------------	--

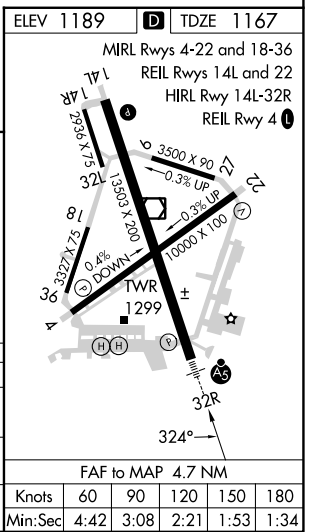
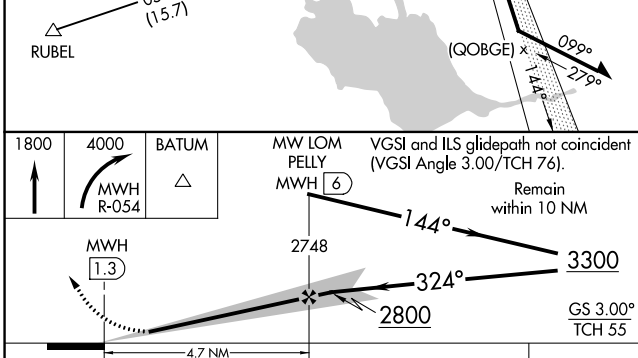
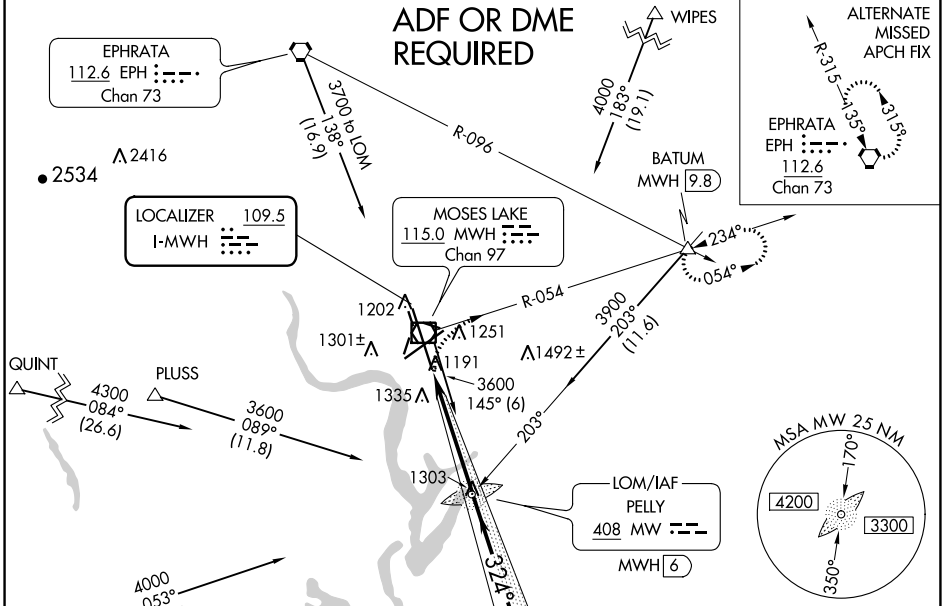
# ILS or LOC RWY 32R

GRANT COUNTY INTL (MWH)

**⚠** When local altimeter setting not received, use Ephrata altimeter setting; increase all DA/MDA 40 feet and Circling Cat D visibility 1/4 SM. For inop MALS/R, increase S-LOC 32R Cat D visibility to RVR 5000. \*RVR 1800 authorized with use of FD or AP or HUD to DA, NA when using Ephrata altimeter setting.

**MALS** MISSED APPROACH: Climb to 1800, then climbing right turn to 4000 on MWH R-054 to BATUM INT/MWH 9.8 DME and hold, continue climb-in-hold to 4000.

ATIS <b>119.05</b>	GRANT COUNTY APP CON * <b>126.4 379.95</b>	GRANT COUNTY TOWER * <b>118.25 (CTAF) 0 257.8 (EAST)</b> <b>128.0 257.8 (WEST)</b>	GND CON <b>121.9</b>	UNICOM <b>122.95</b>
-----------------------	---	--	-------------------------	-------------------------



CATEGORY	A	B	C	D
S-ILS 32R*	1367/24 200 (200-1/2)			
S-LOC 32R	1440/24 273 (300-1/2)		1440/40 273 (300-3/4)	
CIRCLING	1680-1 491 (500-1)		1680-1 1/2 491 (500-1 1/2)	1820-2 631 (700-2)

NW-1, 28 NOV 2024 to 26 DEC 2024

NW-1, 28 NOV 2024 to 26 DEC 2024