

| | | | |
|--|------------------------|---|--------------|
| WAAS CH 70410 W22A | APP CRS 216° | Rwy Idg TDZE 1166 Apt Elev 1189 | 10000 |
|--|------------------------|---|--------------|

RNAV (GPS) Y RWY 22

GRANT COUNTY INTL (MWH)

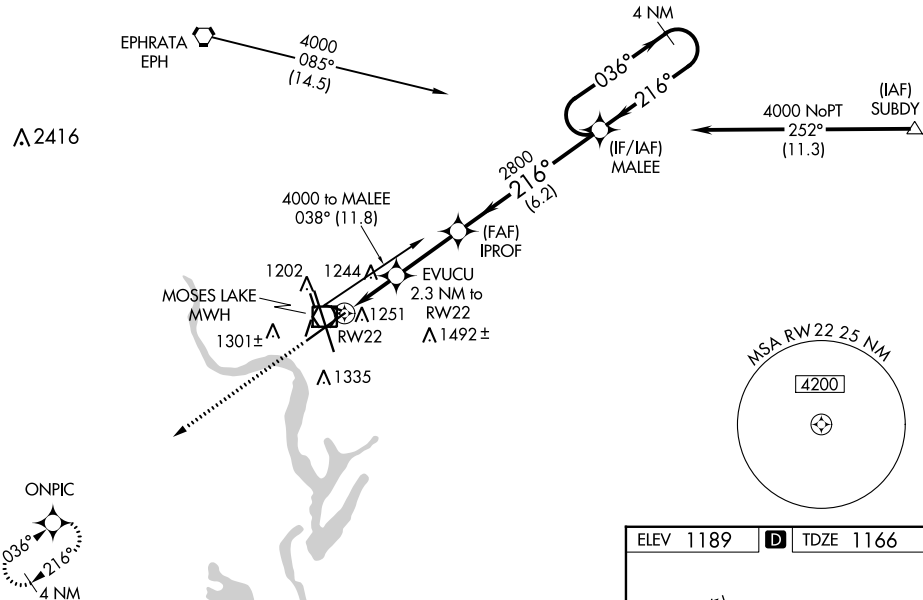
RNP APCH.

⚠ For uncompensated Baro-VNAV systems, LNAV/VNAV NA below -17°C or above 36°C. Baro-VNAV and VDP NA when using Ephrata altimeter setting. When local altimeter setting not received, use Ephrata altimeter setting; increase all DA 36 feet and all MDA 40 feet, increase LNAV/VNAV all Cats visibility and LNAV Cats C and D visibility 1/8 SM and Circling Cat D visibility 1/4 SM.

MISSED APPROACH:
Climb to 4000 direct ONPIC and hold.

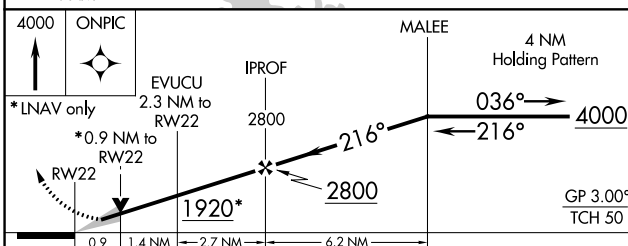
| | | | | |
|-----------------------|---|--|-------------------------|-------------------------|
| ATIS 119.05 | GRANT COUNTY APP CON * 126.4 379.95 | GRANT COUNTY TOWER * 118.25 (CTAF) 0 257.8 (EAST) 128.0 257.8 (WEST) | GND CON 121.9 | UNICOM 122.95 |
|-----------------------|---|--|-------------------------|-------------------------|

Procedure NA for arrivals at EPH VORTAC on airway radials 060 CW 135.

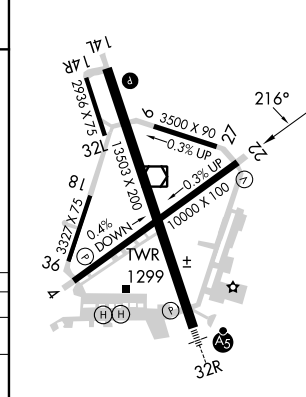


NW-1, 28 NOV 2024 to 26 DEC 2024

NW-1, 28 NOV 2024 to 26 DEC 2024



| | |
|-----------|--------------------|
| ELEV 1189 | D TDZE 1166 |
|-----------|--------------------|



| CATEGORY | A | B | C | D |
|--------------|--------|-------------|-------------------------------|-----------------------|
| LPV DA | | 1366-3/4 | 200 (200-3/4) | |
| LNAV/VNAV DA | | 1429-7/8 | 263 (300-7/8) | |
| LNAV MDA | | 1500-1 | 334 (400-1) | |
| CIRCLING | 1660-1 | 471 (500-1) | 1680-1 1/2 491 (500-1 1/2) | 1820-2 631 (700-2) |

REIL Rwy 4
REIL Rws 14L and 22
HIRL Rwy 14L-32R
MRL Rws 4-22 and 18-36