

WAAS CH <b>42809</b> <b>W04A</b>	APP CRS <b>036°</b>	Rwy Idg <b>10000</b> TDZE <b>1189</b> Apt Elev <b>1189</b>
--	------------------------	--

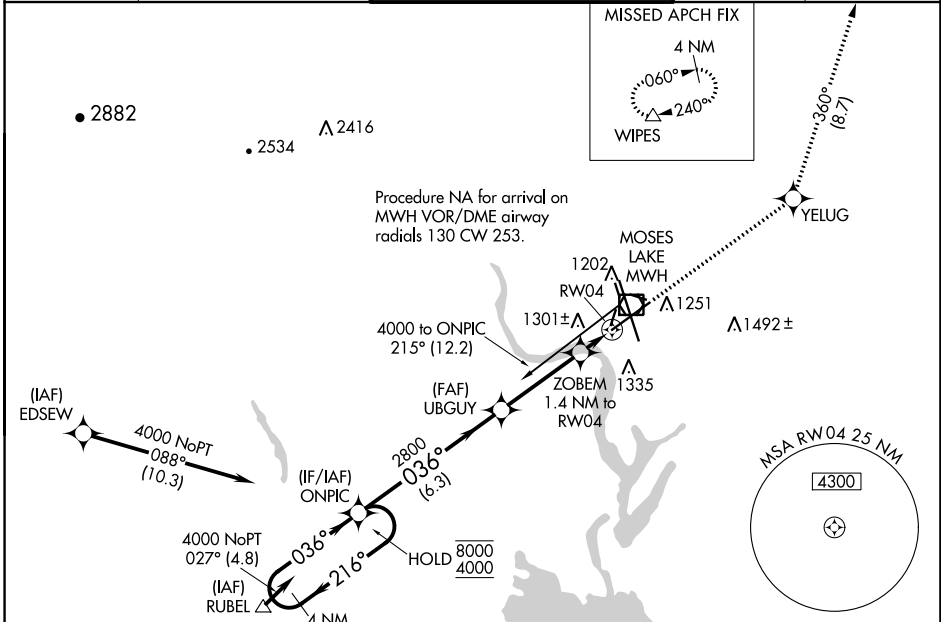
# RNAV (GPS) Y RWY 4

GRANT COUNTY INTL (MWH)

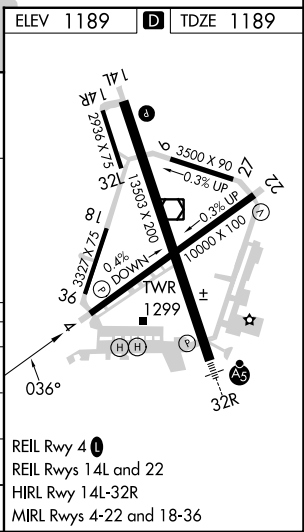
RNP APCH-GPS.  
 ⚠ Circling Rwy 9/27, 18/36 NA at night. For uncompensated Baro-VNAV systems, LNAV/VNAV NA below -15°C or above 54°C.

MISSED APPROACH: Climb to 4000 direct YELUG and on track 360° to WIPES and hold.

ATIS <b>119.05</b>	GRANT COUNTY APP CON ★ <b>126.4 379.95</b>	GRANT COUNTY TOWER ★ <b>118.25 (CTAF) 0 257.8 (EAST)</b> <b>128.0 257.8 (WEST)</b>	GND CON <b>121.9</b>	UNICOM <b>122.95</b>
-----------------------	---	--	-------------------------	-------------------------



4000 Holding Pattern		ONPIC	4000	YELUG	tr 360°	WIPES
8000	← 216°	ONPIC	2800	ZOBEM 1.4 NM to RW04		
4000	036° →	ONPIC	2800	RW04		
GP 3.00°		ONPIC	2800	RW04		
TCH 50		ONPIC	2800	RW04		
		ONPIC	2800	RW04		
		ONPIC	2800	RW04		
CATEGORY	A	B	C	D		
LPV DA		1389-¾	200 (200-¾)			
LNAV/VNAV DA		1461-7/8	272 (300-7/8)			
LNAV MDA		1560-1	371 (400-1)			
CIRCLING	1660-1	471 (500-1)	1680-1½ 491 (500-1½)	1820-2 631 (700-2)		



NW-1, 28 NOV 2024 to 26 DEC 2024

NW-1, 28 NOV 2024 to 26 DEC 2024