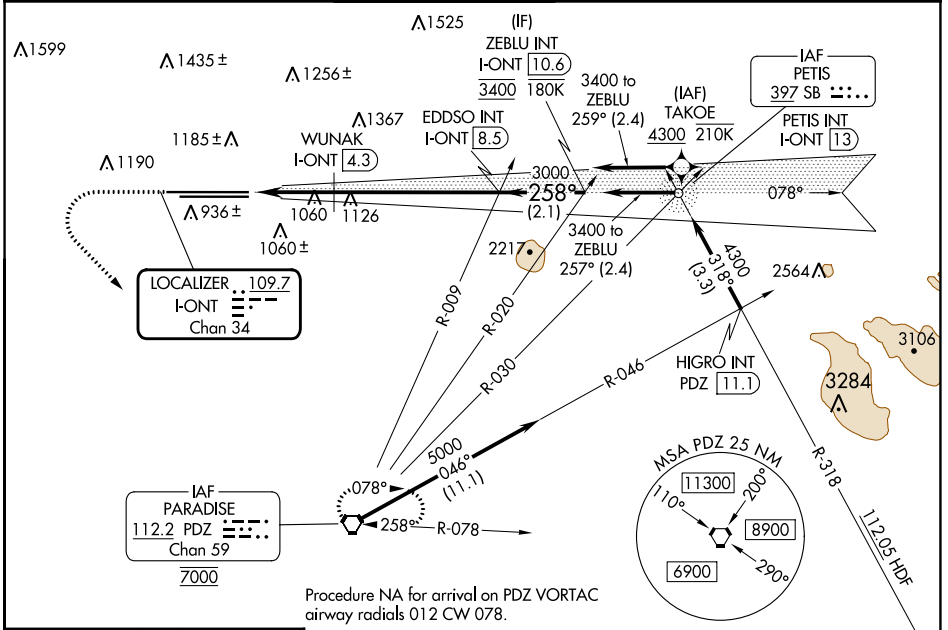


LOC/DME I-ONT 109.7 Chan 34	APP CRS 258°	Rwy Idg 26R 26L	TDZE 12197 932	10200 926
RNP APCH - GPS. From TAKOE.		Apt Elev 26R 26L	944	944

ILS or LOC RWY 26R

ONTARIO INTL (ONT)

MISSED APPROACH: Climb to 2800 then climbing left turn to 5400 direct PDZ VORTAC and hold, continue climb-in-hold to 5400.		ALSF-2 Rwy 26R	ALSF-2 Rwy 26L
D-ATIS 124.25	SOCIAL APP CON 127.0 318.2	ONTARIO TOWER 120.6 360.775	GND CON 121.9 257.8
		CLNC DEL 132.9	CPDLC



Procedure NA for arrival on PDZ VORTAC airway radials 012 CW 078.

ELEV 944	D	TDZE 26R 932 TDZE 26L 926	2800	5400	PDZ	VGSI and ILS glidepath not coincident (VGSI Angle 3.00/TCH 75).	ZEBLU INT I-ONT 10.6																																			
		WUNAK I-ONT 4.3 EDDSO INT I-ONT 8.5 I-ONT 2.2 I-ONT 3.3	1680	3000	3400	258°	GS 3.00° TCH 60																																			
TDZ/CL Rwy 8L, 26L and 26R HIRL Rwy 8L-26R and 8R-26L		<table border="1"> <thead> <tr> <th>CATEGORY</th> <th>A</th> <th>B</th> <th>C</th> <th>D</th> </tr> </thead> <tbody> <tr> <td>S-ILS 26R</td> <td colspan="2">1132/18</td> <td colspan="2">200 (200-½)</td> </tr> <tr> <td>S-LOC 26R</td> <td>1680/24 748 (800-½)</td> <td>1680/40 748 (800-¾)</td> <td>1680-1¾ 754 (800-1¾)</td> <td>1680-2 754 (800-2)</td> </tr> <tr> <td>SIDESTEP 26L</td> <td>1680/55</td> <td>754 (800-1)</td> <td>1680-1¾ 754 (800-1¾)</td> <td>1680-2 754 (800-2)</td> </tr> <tr> <td>C CIRCLING</td> <td>1680-1 736 (800-1)</td> <td>1680-1¼ 736 (800-1¼)</td> <td>1680-2¼ 736 (800-2¼)</td> <td>1680-2½ 736 (800-2½)</td> </tr> <tr> <td colspan="5">WUNAK FIX MINIMUMS (DME REQUIRED)</td> </tr> <tr> <td>S-LOC 26R</td> <td>1320/24</td> <td>388 (400-½)</td> <td>1320/35</td> <td>388 (400-⅝)</td> </tr> </tbody> </table>						CATEGORY	A	B	C	D	S-ILS 26R	1132/18		200 (200-½)		S-LOC 26R	1680/24 748 (800-½)	1680/40 748 (800-¾)	1680-1¾ 754 (800-1¾)	1680-2 754 (800-2)	SIDESTEP 26L	1680/55	754 (800-1)	1680-1¾ 754 (800-1¾)	1680-2 754 (800-2)	C CIRCLING	1680-1 736 (800-1)	1680-1¼ 736 (800-1¼)	1680-2¼ 736 (800-2¼)	1680-2½ 736 (800-2½)	WUNAK FIX MINIMUMS (DME REQUIRED)					S-LOC 26R	1320/24	388 (400-½)	1320/35	388 (400-⅝)
CATEGORY	A	B	C	D																																						
S-ILS 26R	1132/18		200 (200-½)																																							
S-LOC 26R	1680/24 748 (800-½)	1680/40 748 (800-¾)	1680-1¾ 754 (800-1¾)	1680-2 754 (800-2)																																						
SIDESTEP 26L	1680/55	754 (800-1)	1680-1¾ 754 (800-1¾)	1680-2 754 (800-2)																																						
C CIRCLING	1680-1 736 (800-1)	1680-1¼ 736 (800-1¼)	1680-2¼ 736 (800-2¼)	1680-2½ 736 (800-2½)																																						
WUNAK FIX MINIMUMS (DME REQUIRED)																																										
S-LOC 26R	1320/24	388 (400-½)	1320/35	388 (400-⅝)																																						
FAF to MAP 6.3 NM		<table border="1"> <tr> <td>Knots</td> <td>60</td> <td>90</td> <td>120</td> <td>150</td> <td>180</td> </tr> <tr> <td>Min:Sec</td> <td>6:18</td> <td>4:12</td> <td>3:09</td> <td>2:31</td> <td>2:06</td> </tr> </table>						Knots	60	90	120	150	180	Min:Sec	6:18	4:12	3:09	2:31	2:06																							
Knots	60	90	120	150	180																																					
Min:Sec	6:18	4:12	3:09	2:31	2:06																																					

SW-3, 28 NOV 2024 to 26 DEC 2024

SW-3, 28 NOV 2024 to 26 DEC 2024