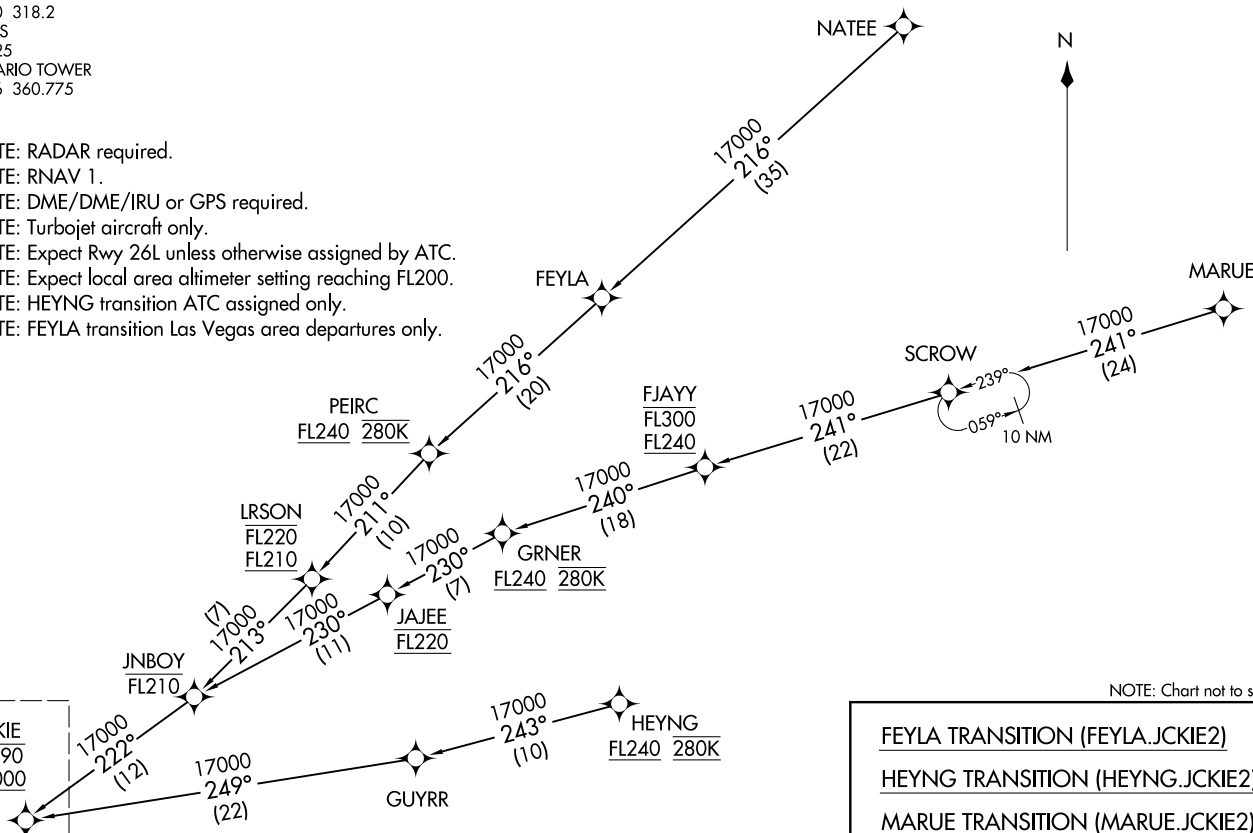


SOCAL APP CON
127.0 318.2
D-ATIS
124.25
ONTARIO TOWER
120.6 360.775

- NOTE: RADAR required.
- NOTE: RNAV 1.
- NOTE: DME/DME/IRU or GPS required.
- NOTE: Turbojet aircraft only.
- NOTE: Expect Rwy 26L unless otherwise assigned by ATC.
- NOTE: Expect local area altimeter setting reaching FL200.
- NOTE: HEYNG transition ATC assigned only.
- NOTE: FEYLA transition Las Vegas area departures only.



NOTE: Chart not to scale.

FEYLA TRANSITION (FEYLA.JCKIE2)
 HEYNG TRANSITION (HEYNG.JCKIE2)
 MARUE TRANSITION (MARUE.JCKIE2)
 NATEE TRANSITION (NATEE.JCKIE2)

(CONTINUED ON FOLLOWING PAGE)

JCKIE TWO ARRIVAL (RNAV) Transition Routes
(JCKIE.JCKIE2) 05DEC19
ONTARIO, CALIFORNIA
ONTARIO INTL (ONT)

(JCKIE.JCKIE2) 19339
JCKIE TWO ARRIVAL (RNAV) Transition Routes
A-95 (FAA)
ONTARIO, CALIFORNIA
ONTARIO INTL (ONT)

See following page for arrival route.

SOCAL APP CON
127.0 318.2
D-ATIS
124.25
ONTARIO TOWER
120.6 360.775

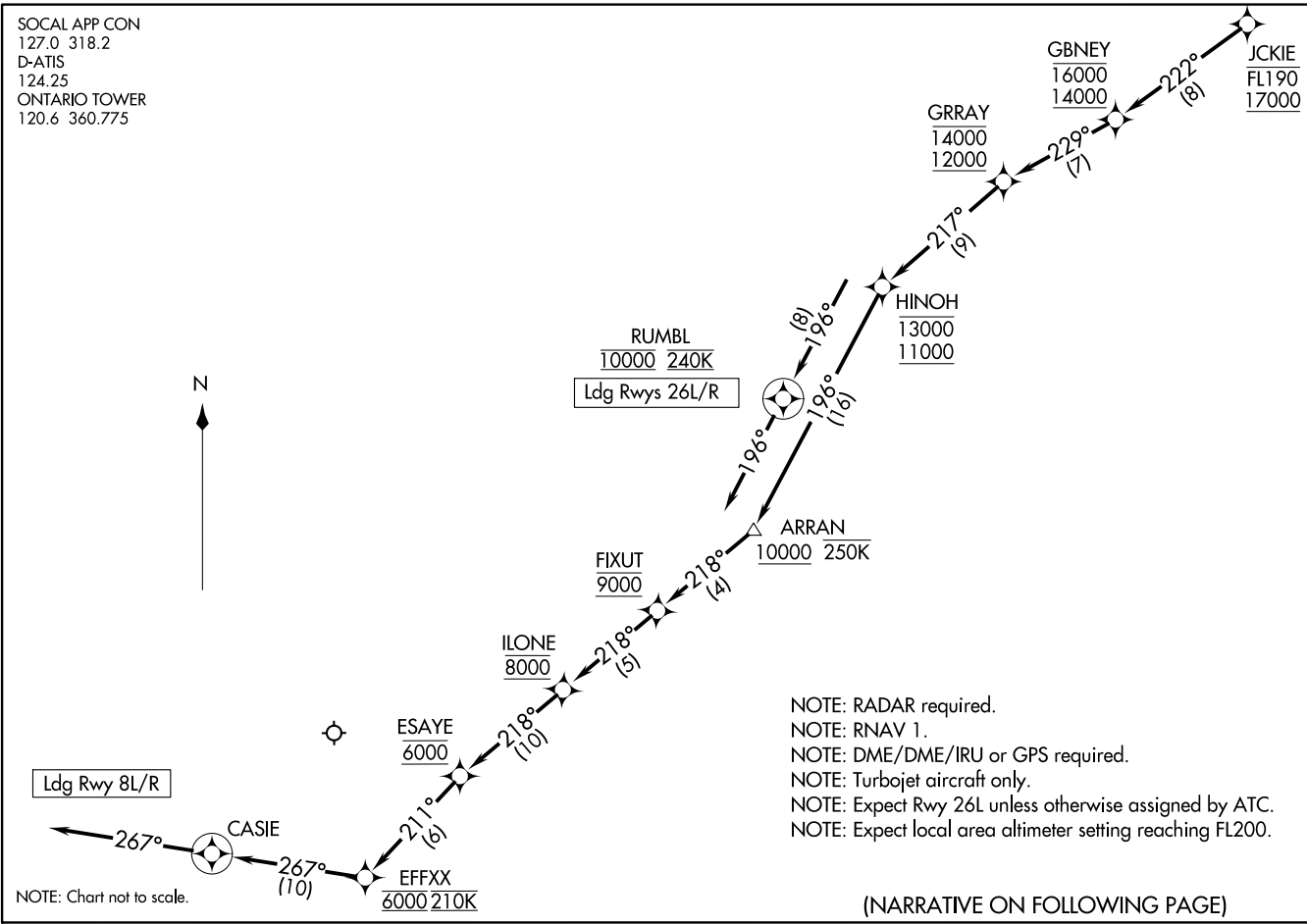
Ldg Rwy 8L/R

RUMBL
10000 240K
Ldg Rwys 26L/R

NOTE: RADAR required.
NOTE: RNAV 1.
NOTE: DME/DME/IRU or GPS required.
NOTE: Turbojet aircraft only.
NOTE: Expect Rwy 26L unless otherwise assigned by ATC.
NOTE: Expect local area altimeter setting reaching FL200.

(NARRATIVE ON FOLLOWING PAGE)

NOTE: Chart not to scale.



ARRIVAL ROUTE DESCRIPTION

From JCKIE on track 222° to cross GBNEY between 14000 and 16000, then on track 229° to cross GRRAY between 12000 and 14000, then on track 217° to cross HINOH between 11000 and 13000.

LANDING RUNWAY 8L/R: From HINOH on track 196° to cross ARRAN at or above 10000 and at or below 250K, then on track 218° to cross FIXUT at 9000, then on track 218° to cross ILONE at 8000, then on track 218° to cross ESAYE at 6000, then on track 211° to cross EFFXX at 6000 and at 210K then on track 267° to CASIE, then on heading 267° or as assigned by ATC. Expect RNAV (RNP) Z RWY 8L approach or RADAR vectors to final approach course.

LANDING RWY 26L/R: From HINOH on track 196° to cross RUMBL at 10000 and at 240K, then on heading 196° or as assigned by ATC. Expect RNAV (RNP) Z RWY 26L approach or RADAR vectors to final approach course.

LOST COMMUNICATIONS

LANDING WEST: Proceed on the RNAV (RNP) Z RWY 26L approach or ILS or LOC RWY 26L approach.

LANDING EAST: Proceed on the RNAV (RNP) Z RWY 8L approach or ILS or LOC RWY 8L approach.

SW-3, 28 NOV 2024 to 26 DEC 2024

SW-3, 28 NOV 2024 to 26 DEC 2024