

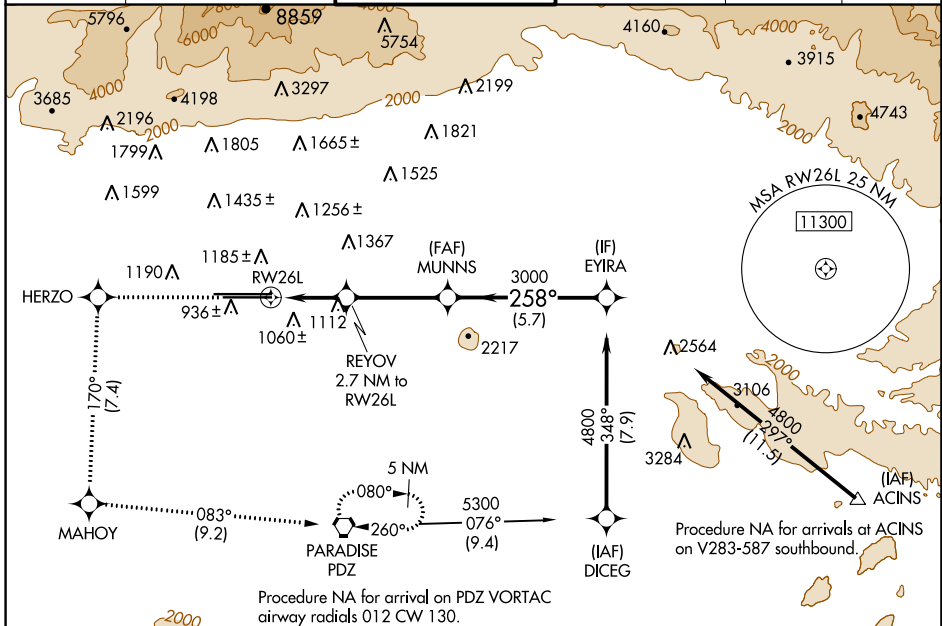
WAAS CH 90407 W26B	APP CRS 258°	Rwy Idg 10200 TDZE 926 Apt Elev 944
--	------------------------	--

RNAV (GPS) Y RWY 26L

ONTARIO INTL (ONT)

RNP APCH - GPS.		ALSF-2	MISSED APPROACH: Climb to 4700 direct HERZO and on track 170° to MAHOY and on track 083° to PDZ VORTAC, continue climb in hold to 4700.		
<p>▼ Circling NA north of Rwy 8L-26R. For uncompensated Baro-VNAV systems, procedure NA below 2°C or above 54°C. For inop ALS, increase all Cats LNAV/VNAV visibility to RVR 5500.</p>					

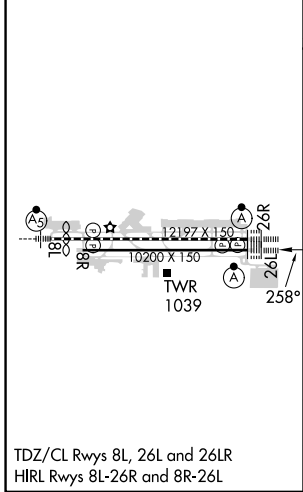
D-ATIS 124.25	SOCAL APP CON 127.0 318.2	ONTARIO TOWER 120.6 360.775	GND CON 121.9 257.8	CLNC DEL 132.9	CPDLC
-------------------------	-------------------------------------	---------------------------------------	-------------------------------	--------------------------	-------



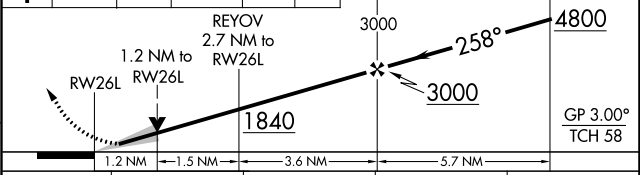
SW-3, 28 NOV 2024 to 26 DEC 2024

SW-3, 28 NOV 2024 to 26 DEC 2024

ELEV 944	D	TDZE 926
----------	----------	----------



4700	HERZO	MAHOY	PDZ	VGSI and RNAV glidepath not coincident (VGSI Angle 3.00/TCH 74).
↑	tr 170°	tr 083°	MUNNNS	EYIRA



CATEGORY	A	B	C	D
LPV DA		1126/18	200 (200-½)	
LNAV/VNAV DA		1267/30	341 (400-⅙)	
LNAV MDA	1380/24	454 (500-½)	1380/45	454 (500-⅞)
C CIRCLING	1400-1	456 (500-1)	1500-1½	1540-2
			556 (600-1½)	596 (600-2)