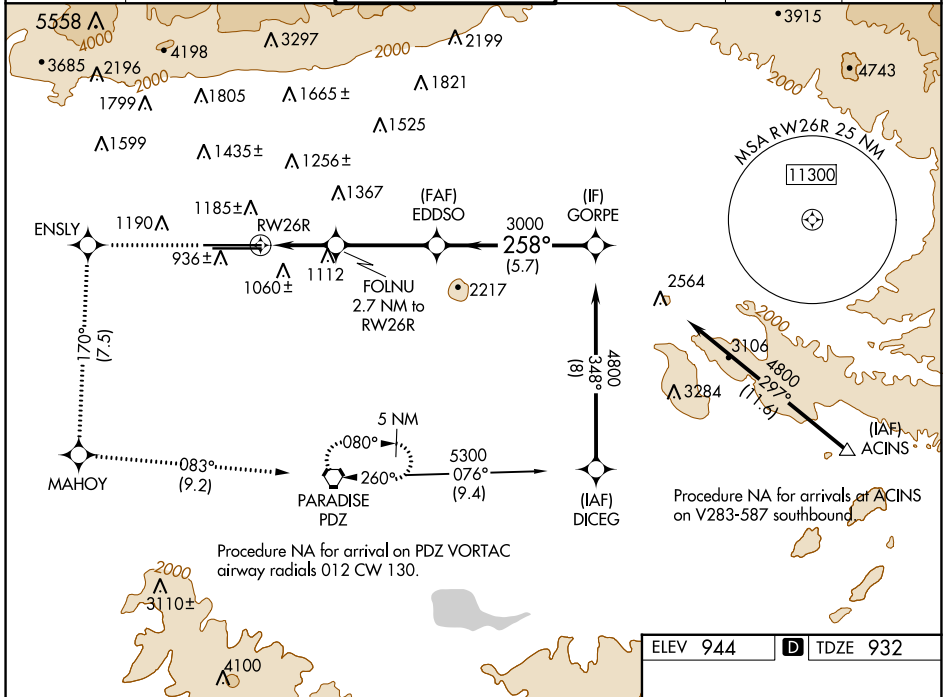


WAAS CH <b>53406</b> <b>W26A</b>	APP CRS <b>258°</b>	Rwy Idg <b>12197</b> TDZE <b>932</b> Apt Elev <b>944</b>
--	------------------------	--

# RNAV (GPS) Y RWY 26R

ONTARIO INTL (ONT)

RNP APCH - GPS.		ALSIF-2	MISSED APPROACH: Climb to 4700 direct ENSLY and on track 170° to MAHOY and on track 083° to PDZ VORTAC and hold, continue climb-in-hold to 4700.		
▼ Circling NA north of Rwy 8L-26R. For uncompensated Baro-VNAV systems, procedure NA below 2°C or above 54°C.					
D-ATIS <b>124.25</b>	SOCAL APP CON <b>127.0 318.2</b>	ONTARIO TOWER <b>120.6 360.775</b>	GND CON <b>121.9 257.8</b>	CLNC DEL <b>132.9</b>	CPDLC



SW-3, 28 NOV 2024 to 26 DEC 2024

SW-3, 28 NOV 2024 to 26 DEC 2024

ELEV 944	<b>D</b> TDZE 932
4700	↑
ENSLY	tr 170°
MAHOY	tr 083°
PDZ	
VGSIs and RNAV glidepaths not coincident (VGSIs Angle 3.00/TCH 75).	
EDDSO	GORPE
3000	4800
FOLNU 2.7 NM to RWY 26R	258°
1.2 NM to RWY 26R	3000
1840	GP 3.00° TCH 60
1.2 NM	1.5 NM
3.6 NM	5.7 NM
CATEGORY	A B C D
LPV DA	1132/18 200 (200-½)
LNAV/VNAV DA	1267/55 335 (400-1)
LNAV MDA	1380/24 448 (500-½) 1380/45 448 (500-¾)
<b>C</b> CIRCLING	1400-1 456 (500-1) 1500-1½ 556 (600-1½) 1540-2 596 (600-2)

