

NSNHN FIVE DEPARTURE (RNAV)  
(SNSHNS, SNSHN) 10SEF20

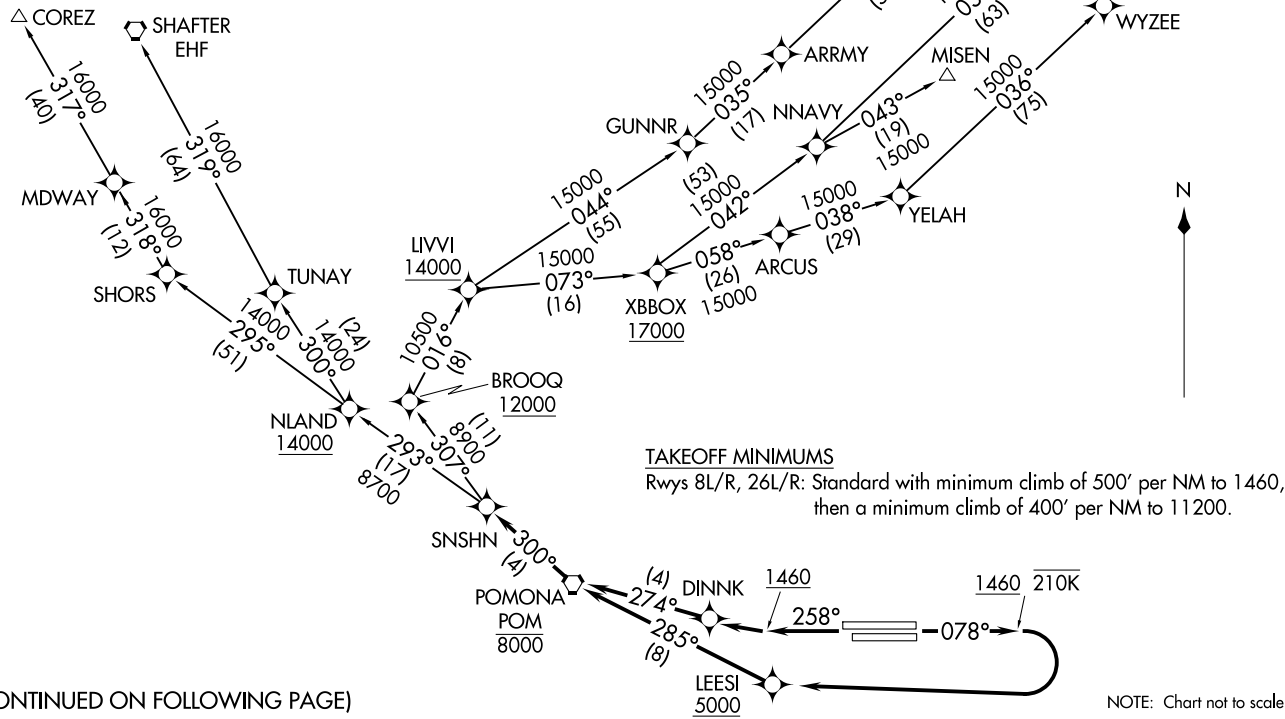
D-ATIS  
124.25  
CLNC DEL  
132.9  
CPDLC  
GND CON  
121.9 257.8  
ONTARIO TOWER  
120.6 360.775  
SOCAL DEP CON  
125.5 349.0

NOTE: RNAV 1.  
NOTE: RADAR required.  
NOTE: DME/DME/IRU or GPS required.  
NOTE: Turbojet and turboprop aircraft only.  
NOTE: MISEN transition restricted to aircraft landing LAS terminal area.  
NOTE: HAILO/BEALE/YELAH transition ATC only.  
NOTE: Maintain at or below 250K unless otherwise directed by ATC.

**TOP ALTITUDE:  
FL230**

(SNSHNS, SNSHN) 24081  
NSNHN FIVE DEPARTURE (RNAV)  
A1-965 (FAA)

ONTARIO INTL (ONT)  
ONTARIO, CALIFORNIA



(CONTINUED ON FOLLOWING PAGE)

NOTE: Chart not to scale.

ONTARIO, CALIFORNIA  
ONTARIO INTL (ONT)



DEPARTURE ROUTE DESCRIPTION

TAKEOFF RUNWAYS 8L/R: Climb on heading 078° to 1460 at or below 210K, then right turn direct to cross LEESI at or above 5000, then on track 285° to cross POM VORTAC at or below 8000, then on track 300° to SNSHN, thence. . . .

TAKEOFF RUNWAYS 26L/R: Climb on heading 258° to 1460, then direct DINNK, then on track 274° to cross POM VORTAC at or below 8000, then on track 300° to SNSHN, thence. . . .

. . . .on (transition) maintain FL230, expect filed altitude 10 minutes after departure.

BEALE TRANSITION (SNSHN5.BEALE)

COREZ TRANSITION (SNSHN5.COREZ)

HAILO TRANSITION (SNSHN5.HAILO)

LAS VEGAS TRANSITION (SNSHN5.LAS)

MISEN TRANSITION (SNSHN5.MISEN)

SHAFTER TRANSITION (SNSHN5.EHF)

YELAH TRANSITION (SNSHN5.YELAH)

SW-3, 28 NOV 2024 to 26 DEC 2024

SW-3, 28 NOV 2024 to 26 DEC 2024