

WAAS CH 50505 W14A	APP CRS 136°	Rwy ldg 6500 TDZE 266 Apt Elev 272
--	------------------------	---

RNAV (GPS) RWY 14

HARDY-ANDERS FLD/NATCHEZ-ADAMS COUNTY (HE/Z)

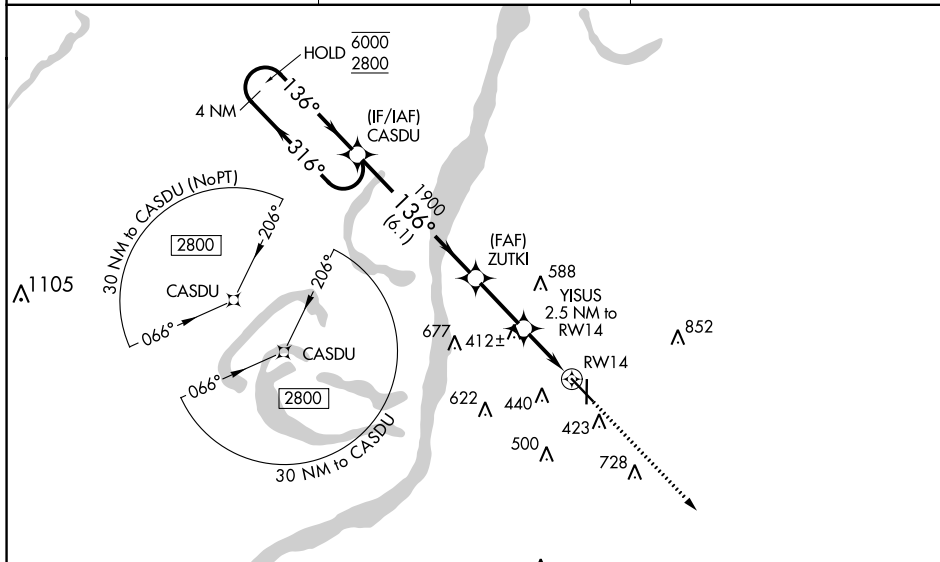
RNP APCH - GPS.

⚠ Circling Rwy 36 NA at night. Rwy 14 helicopter visibility reduction below 3/4 SM NA. For uncompensated Baro-VNAV systems, LNAV/VNAV NA below -15° C or above 54° C. For inop ALS, increase LNAV Cats C and D visibility to 1 1/8 SM. Inop table does not apply to LPV, LNAV/VNAV, and LNAV Cats A and B.

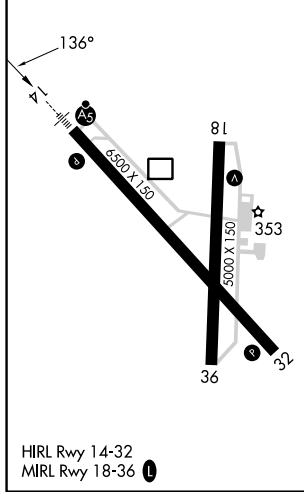
MALSR

MISSED APPROACH: Climb to 2800 direct WEGRA and hold.

AWOS-3PT 124.675	HOUSTON CENTER 120.975 299.6	UNICOM 122.8 (CTAF)
----------------------------	--	-------------------------------



ELEV 272	TDZE 266
----------	----------



RNAV (GPS) RWY 14

4 NM Holding Pattern CASDU 6000 ← 316° 2800 → 136°	CASDU ZUTKI 1900 YISUS 2.5 NM to RW14 1100 1.1 NM to RW14	WEGRA 2800 4 NM	GP 3.00° TCH 54 6.1 NM 2.5 NM 1.4 NM 1.1 NM			
			CATEGORY LPV DA LNAV/VNAV DA LNAV MDA CIRCLING	A 740-1 468 (500-1)	B 820-1 548 (600-1)	C 1020-2 1/4 748 (800-2 1/4)

SC-4, 28 NOV 2024 to 26 DEC 2024

SC-4, 28 NOV 2024 to 26 DEC 2024