

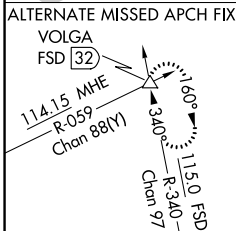
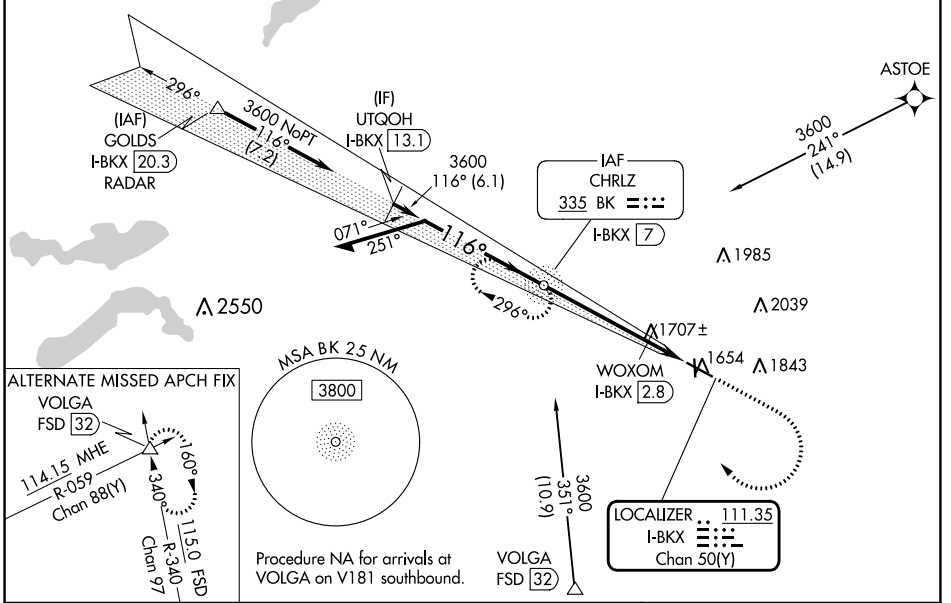
LOC/DME I-BKX 111.35 Chan 50(Y)	APP CRS 116°	Rwy Idg 6000 TDZE 1621 Apt Elev 1648
--	------------------------	---

ILS or LOC RWY 12

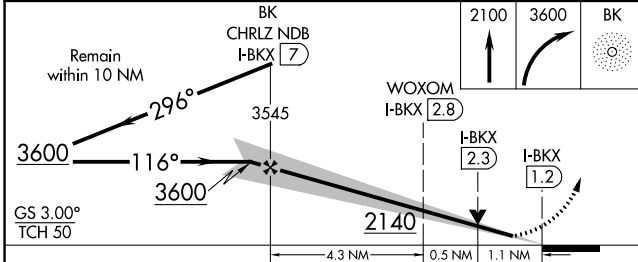
BROOKINGS RGNL (BKX)

DME required. ADF required. From ASTOE: RNAV 1-GPS required.	MALSR AS	MISSED APPROACH: Climb to 2100 then climbing right turn to 3600 direct BK NDB and hold, continue climb-in hold to 3600.
--	-------------	---

AWOS-3PT 119.925	MINNEAPOLIS CENTER 132.05 317.4	GCO 121.725	UNICOM 123.0 (CTAF)
----------------------------	---	-----------------------	-------------------------------

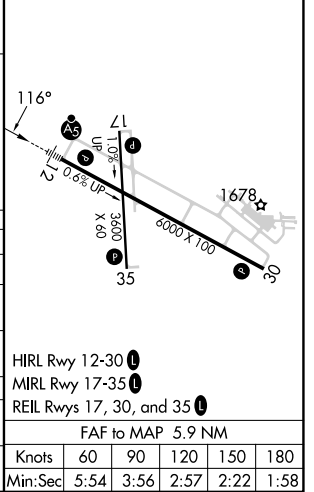


Procedure NA for arrivals at VOLGA on V181 southbound.



ELEV 1648	D	TDZE 1621
-----------	---	-----------

CATEGORY	A	B	C	D
S-ILS 12		1821-½	200 (200-½)	
S-LOC 12	2140-½	519 (500-½)	2140-1	519 (500-1)
CIRCLING	2140-1	2160-1	2340-2	2340-2¼
	492 (500-1)	512 (600-1)	692 (700-2)	692 (700-2¼)
WOXOM FIX MINIMUMS				
S-LOC 12	2000-½	379 (400-½)	2000-5/8	379 (400-5/8)
CIRCLING	2140-1	2160-1	2340-2	2340-2¼
	492 (500-1)	512 (600-1)	692 (700-2)	692 (700-2¼)



HIRL Rwy 12-30
MIRL Rwy 17-35
REIL Rws 17, 30, and 35

FAF to MAP 5.9 NM

Knots	60	90	120	150	180
Min:Sec	5:54	3:56	2:57	2:22	1:58

NC-1, 28 NOV 2024 to 26 DEC 2024

NC-1, 28 NOV 2024 to 26 DEC 2024