

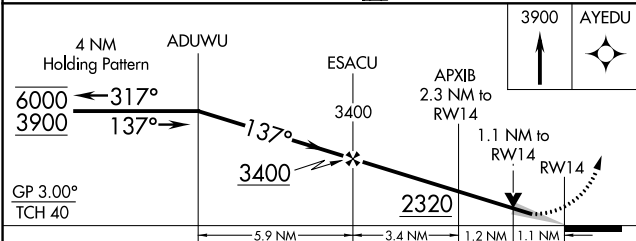
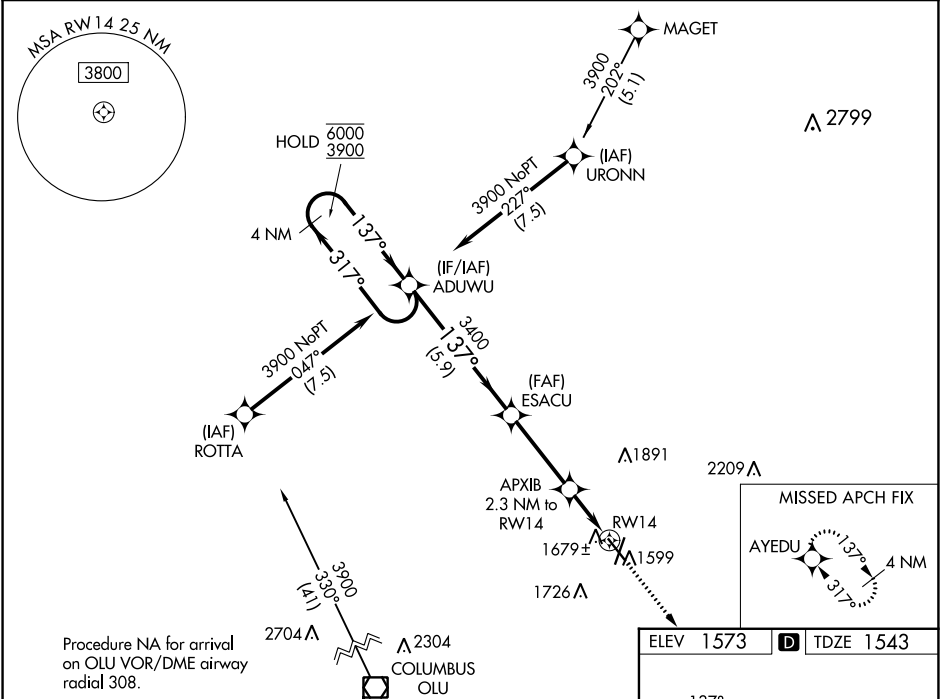
WAAS CH <b>62915</b> <b>W14A</b>	APP CRS <b>137°</b>	Rwy Idg TDZE Apt Elev	<b>5160</b> <b>1543</b> <b>1573</b>
--	------------------------	-----------------------------	---

# RNAV (GPS) RWY 14

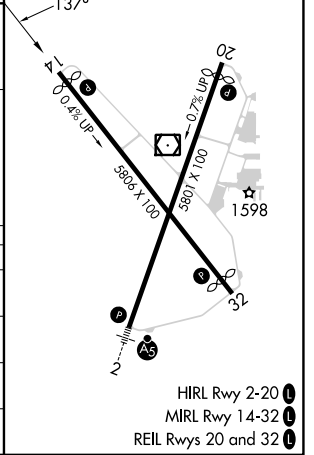
NORFOLK RGNL/KARL STEFAN MEML FLD (OFK)

RNP APCH - GPS.	MISSED APPROACH: Climb to 3900 direct AYEDU and hold.
<p>▼ For uncompensated Baro-VNAV systems, LNAV/VNAV NA below -23°C or above 54°C.</p> <p>▲</p>	

ASOS <b>119.025</b>	MINNEAPOLIS CENTER <b>125.025 235.625</b>	UNICOM <b>122.7 (CTAF) 0</b>
------------------------	--	---------------------------------



ELEV 1573	TDZE 1543
-----------	-----------



CATEGORY	A	B	C	D
LPV DA		1808-1	265 (300-1)	
LNAV/VNAV DA		1860-1	317 (300-1)	
LNAV MDA	1940-1	397 (400-1)	1940-1½	397 (400-1½)
CIRCLING	2060-1 487 (500-1)	2100-1 527 (600-1)	2260-2 687 (700-2)	2360-2½ 787 (800-2½)

- HIRL Rwy 2-20 0
- MIRL Rwy 14-32 0
- REIL Rws 20 and 32 0

NC-2, 28 NOV 2024 to 26 DEC 2024

NC-2, 28 NOV 2024 to 26 DEC 2024