

WAAS CH 56220 W20A	APP CRS 194°	Rwy Idg TDZE Apt Elev	5504 1545 1573
--	------------------------	-----------------------------	---

RNAV (GPS) RWY 20

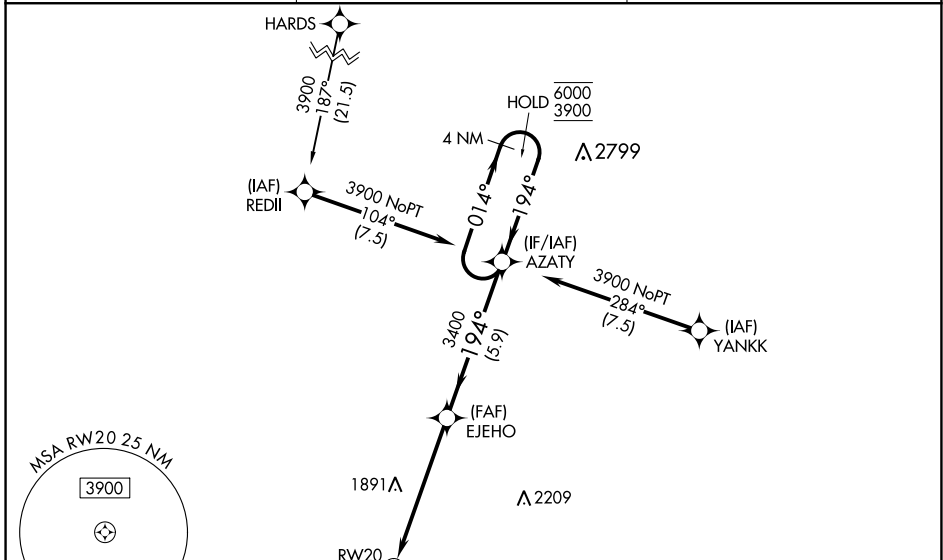
NORFOLK RGNL/KARL STEFAN MEML FLD (OFK)

RNP APCH - GPS.

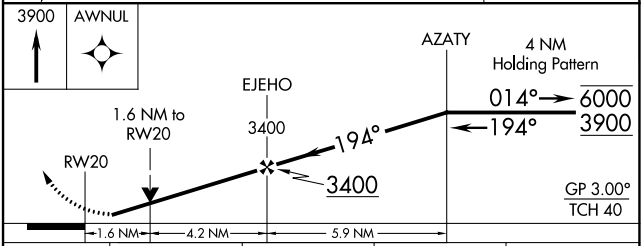
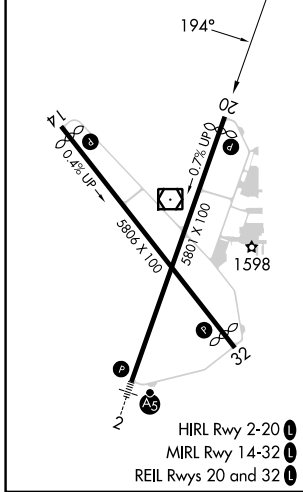
▼ Rwy 20 helicopter visibility reduction below ¾ SM NA. For uncompensated Baro-VNAV systems, LNAV/VNAV NA below -23°C or above 54°C.

MISSED APPROACH: Climb to 3900 direct AWNNUL and hold.

ASOS 119.025	MINNEAPOLIS CENTER 125.025 235.625	UNICOM 122.7 (CTAF) 0
------------------------	--	---------------------------------



ELEV 1573	D	TDZE 1545
-----------	----------	-----------



CATEGORY	A	B	C	D
LPV DA		1795-1	250 (300-1)	
LNAV/VNAV DA		1799-1	254 (300-1)	
LNAV MDA	2080-1	535 (600-1)	2080-1½	535 (600-1½)
CIRCLING	2080-1 507 (600-1)	2100-1 527 (600-1)	2260-2 687 (700-2)	2360-2½ 787 (800-2½)

NC-2, 28 NOV 2024 to 26 DEC 2024

NC-2, 28 NOV 2024 to 26 DEC 2024