

WAAS CH <b>62820</b> <b>W05A</b>	APP CRS <b>049°</b>	Rwy Idg TDZE Apt Elev	<b>5000</b> <b>48</b> <b>53</b>
--	------------------------	-----------------------------	---------------------------------------

# RNAV (GPS) RWY 5

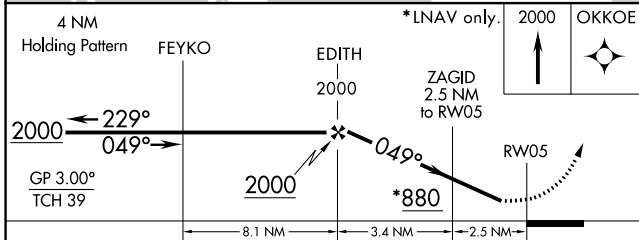
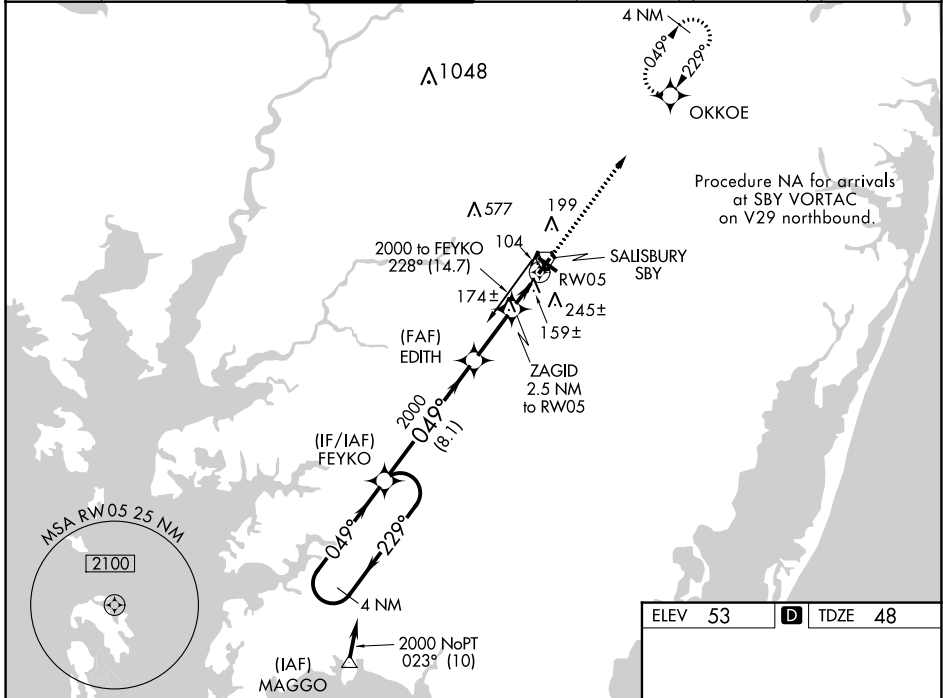
SALISBURY-OCEAN CITY WICOMICO RGNL (SBY)

RNP APCH.

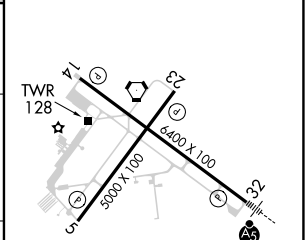
Baro-VNAV NA when using Georgetown altimeter setting. For uncompensated Baro-VNAV systems, LNAV/VNAV NA below -15°C or above 49°C. Visibility reduction by helicopters NA. When local altimeter setting not received use Georgetown altimeter setting: increase LPV DA to 394 feet and increase all Cats visibility ¼ SM; increase LNAV/VNAV DA to 512 feet and all Cats visibility ¼ SM; increase all MDA 60 feet and LNAV Cat C/D and Circling Cat D visibility ¼ SM.

MISSED APPROACH: Climb to 2000 direct OKKOE and hold.

ASOS <b>118.325</b>	PATXENT APP CON* <b>127.95 314.0</b>	SALISBURY TOWER* <b>119.425</b> (CTAF) <b>0</b>	GND CON <b>123.775</b>	CLNC DEL <b>123.775</b>	CLNC DEL <b>118.55</b> (when twr closed)	UNICOM <b>122.95</b>
------------------------	---	--	---------------------------	----------------------------	--	-------------------------



ELEV 53	<b>D</b> TDZE 48
---------	------------------



CATEGORY	A	B	C	D
LPV DA	342-1		294 (300-1)	
LNAV/VNAV DA	460-1½		412 (500-1½)	
LNAV MDA	440-1 392 (400-1)		440-1¼ 392 (400-1¼)	
CIRCLING	480-1 427 (500-1)	520-1 467 (500-1)	560-1½ 507 (600-1½)	700-2 647 (700-2)

REIL Rwy 5, 14 and 23 **0**  
MIRL Rwy 5-23 **0**  
HIRL Rwy 14-32 **0**

NE-3, 28 NOV 2024 to 26 DEC 2024

NE-3, 28 NOV 2024 to 26 DEC 2024