

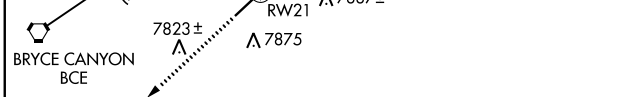
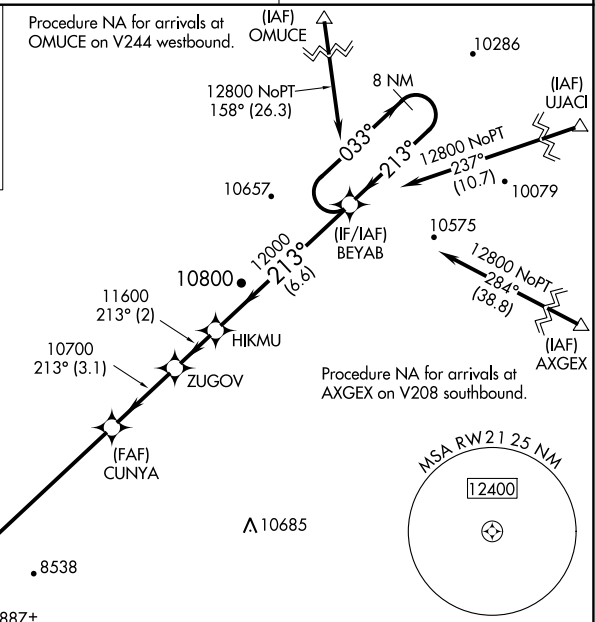
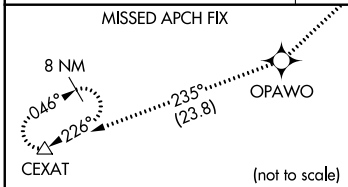
WAAS CH 99516 W21A	APP CRS 213°	Rwy Idg TDZE Apt Elev	7395 7564 7590
--	------------------------	-----------------------------	---

RNAV (GPS) RWY 21

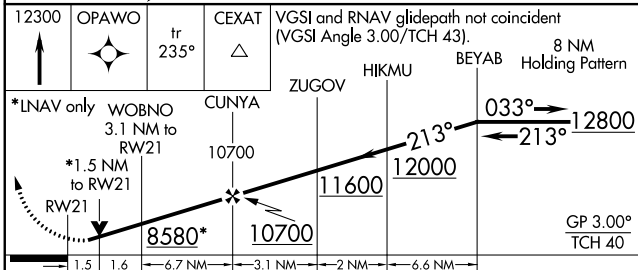
BRYCE CANYON (BCE)

RNP APCH. ▼ For uncompensated Baro-VNAV systems, LNAV/VNAV NA below -30°C or above 54°C. When local altimeter setting not received, procedure NA. Rwy 21 helicopter visibility reduction below 3/4 SM NA.	MISSED APPROACH: Climb to 12300 direct OPAWO and on track 235° to CEXAT and hold.
--	---

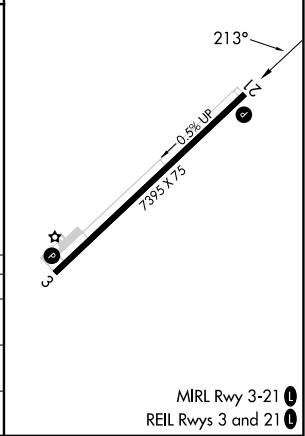
ASOS 135.475	SALT LAKE CITY CENTER 133.6 269.25	UNICOM 122.8 (CTAF) ①
------------------------	--	---------------------------------



ELEV 7590	TDZE 7564
-----------	-----------



CATEGORY	A	B	C	D
LPV DA	7889-1 1/8 325 (300-1 1/8)			NA
LNAV/VNAV DA	8016-1 1/2 452 (500-1 1/2)			NA
LNAV MDA	8040-1 476 (500-1)		8040-1 3/8 476 (500-1 3/8)	NA



SW-4, 28 NOV 2024 to 26 DEC 2024

SW-4, 28 NOV 2024 to 26 DEC 2024