

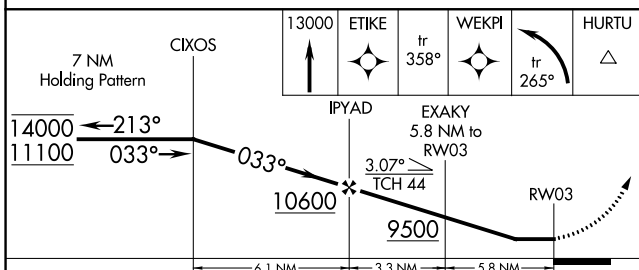
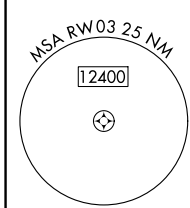
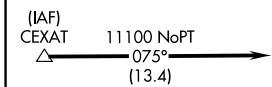
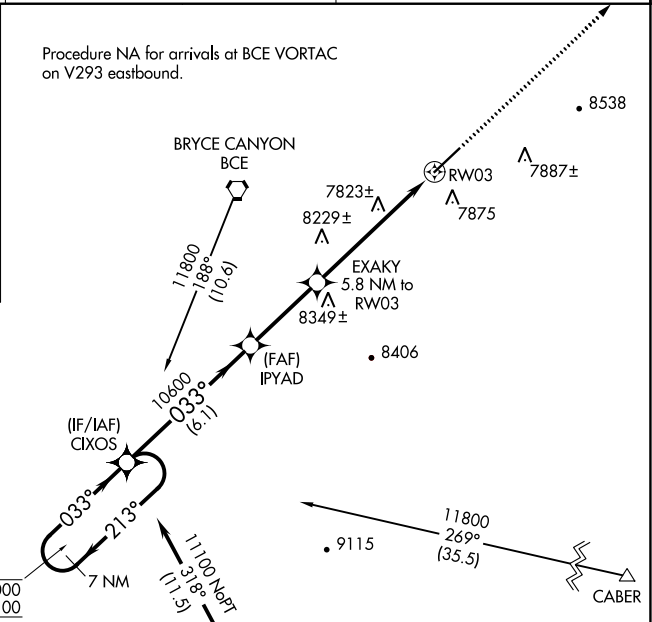
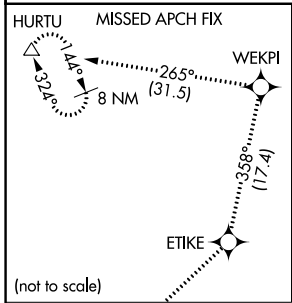
APP CRS	Rwy Idg	<b>7395</b>
<b>033°</b>	TDZE	<b>7590</b>
	Apt Elev	<b>7590</b>

# RNAV (GPS) RWY 3

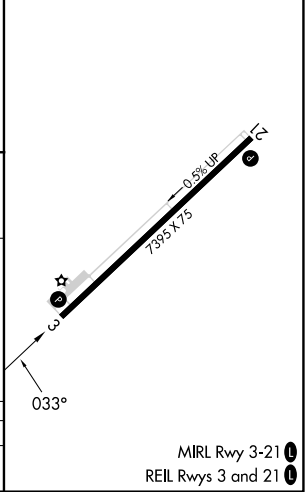
BRYCE CANYON (BCE)

RNP APCH.	MISSED APPROACH: Climb to 13000 direct ETIKE and on track 358° to WEKPI and left turn on track 265° to HURTU and hold.
<p>▼ Rwy 3 helicopter visibility reduction below 1 SM NA. When local altimeter setting not received, procedure NA. Procedure NA at night.</p>	

ASOS <b>135.475</b>	SALT LAKE CITY CENTER <b>133.6 269.25</b>	UNICOM <b>122.8 (CTAF)</b>
------------------------	----------------------------------------------	-------------------------------



ELEV 7590	TDZE 7590
-----------	-----------



CATEGORY	A	B	C	D
LNVA MDA	8440-1 850 (900-1)	8440-1¼ 850 (900-1¼)	8440-2½ 850 (900-2½)	NA

MIRL Rwy 3-21  
REIL Rwy 3 and 21

SW-4, 28 NOV 2024 to 26 DEC 2024

SW-4, 28 NOV 2024 to 26 DEC 2024