

WAAS CH 69503 W27A	APP CRS 274°	Rwy Idg 6122 TDZE 812 Apt Elev 812
--	------------------------	---

RNAV (GPS) RWY 27

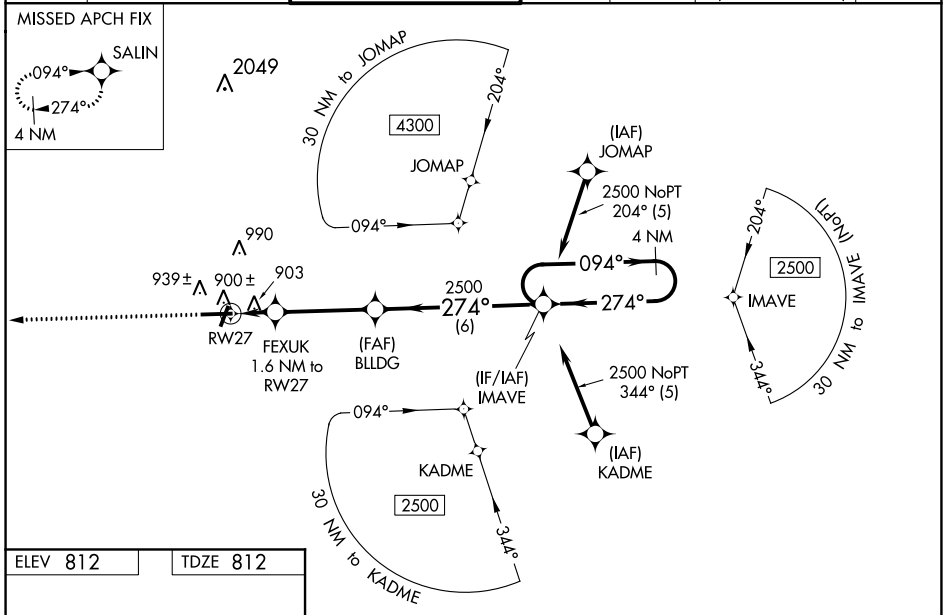
ATHENS/BEN EPPS (AHN)

RNP APCH - GPS.

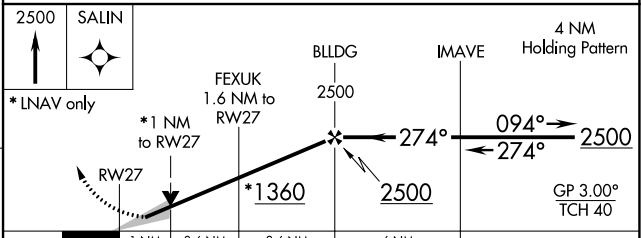
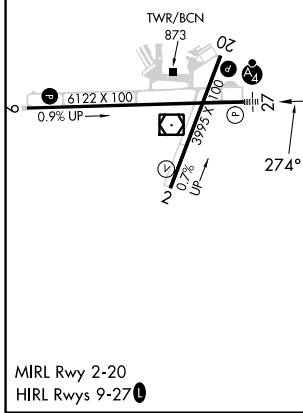
▼ For uncompensated Baro-VNAV systems, LNAV/VNAV NA below -9°C or above 54°C.
 ▲ When local altimeter setting not received, use Winder altimeter setting: increase LPV DA to 1071 feet; increase LNAV/VNAV DA to 1121 feet; increase all MDA 60 feet and increase LNAV Cat C/D visibility to 1 mile and Circling Cat D visibility to 2¼ mile. For inop MALSF, increase LNAV/VNAV all Cats visibility to ¾ mile, increase LNAV Cat C/D visibility to 1 mile. For inop MALSF when using Winder altimeter setting increase LPV all Cats visibility to ¾ mile, increase LNAV/VNAV all Cats visibility to 1 mile, increase LNAV Cat C, D visibility to 1½ mile. Baro-VNAV and VDP NA when using Winder altimeter setting. Inop table does not apply to LPV. Circling Rwy 2, 20 NA at night.

MALSF MISSED APPROACH: Climb to 2500 direct SALIN and hold.

ASOS 132.875	ATLANTA APP CON * 132.475 291.1	ATHENS TOWER * 126.3 (CTAF) 0 338.275	GND CON 121.8	CLNC DEL 121.8	CLNC DEL 132.475 291.1 (when twr closed)	UNICOM 122.95
------------------------	---	---	-------------------------	--------------------------	---	-------------------------



ELEV 812	TDZE 812
----------	----------



CATEGORY	A	B	C	D
LPV DA		1012-¾	200 (200-¾)	
LNAV/VNAV DA		1064-¾	252 (300-¾)	
LNAV MDA		1160-¾	348 (400-¾)	
CIRCLING	1260-1 448 (500-1)	1280-1 468 (500-1)	1320-1½ 508 (600-1½)	1460-2 648 (700-2)