

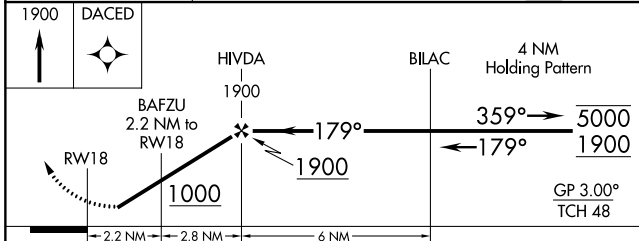
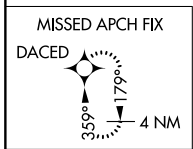
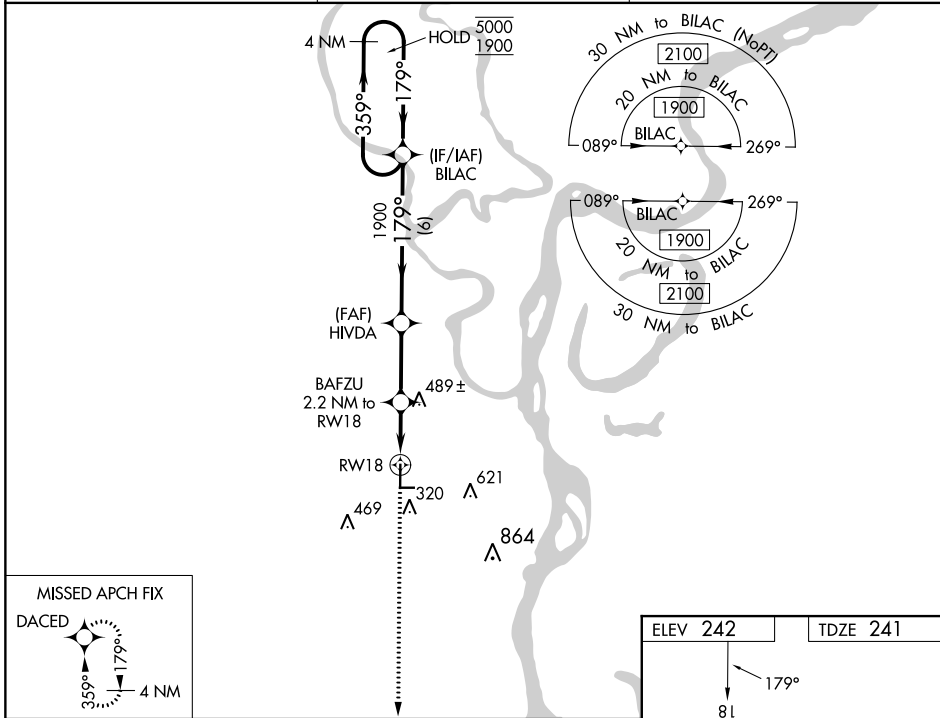
WAAS CH 86941 W18A	APP CRS 179°	Rwy Idg TDZE Apt Elev	5001 241 242
--	------------------------	-----------------------------	---

RNAV (GPS) RWY 18

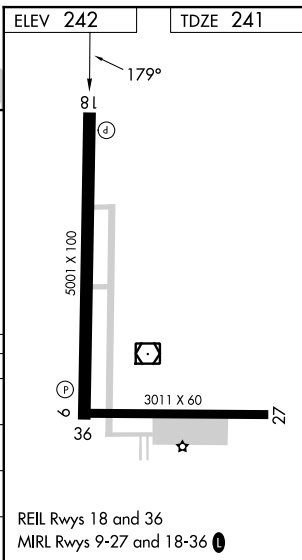
THOMPSON-ROBBINS (HEE)

RNP APCH - GPS.	MISSED APPROACH: Climb to 1900 direct DACED and hold.
<p>▼ Baro-VNAV NA. Use Tunica altimeter setting. Rwy 18 helicopter visibility reduction below 3/4 SM NA. Circling Rwy 9, 27 NA at night.</p> <p>▲ NA</p>	

UTA AWOS-3 118.075	MEMPHIS CENTER 135.3 335.8	UNICOM 122.8 (CTAF) ①
------------------------------	--------------------------------------	---------------------------------



CATEGORY	A	B	C	D
LPV DA		542-1	301 (300-1)	
LNAV/ VNAV DA		710-1 3/8	469 (500-1 3/8)	
LNAV MDA	740-1	499 (500-1)	740-1 3/8	499 (500-1 3/8)
① CIRCLING	840-1	598 (600-1)	980-2 738 (800-2)	980-2 1/4 738 (800-2 1/4)



SC-1, 28 NOV 2024 to 26 DEC 2024

SC-1, 28 NOV 2024 to 26 DEC 2024

REIL Rwy 18 and 36
MIRL Rwy 9-27 and 18-36 ①