

WAAS CH 99617 W32A	APP CRS 326°	Rwy Idg TDZE Apt Elev	6301 1322 1333
--	------------------------	-----------------------------	---

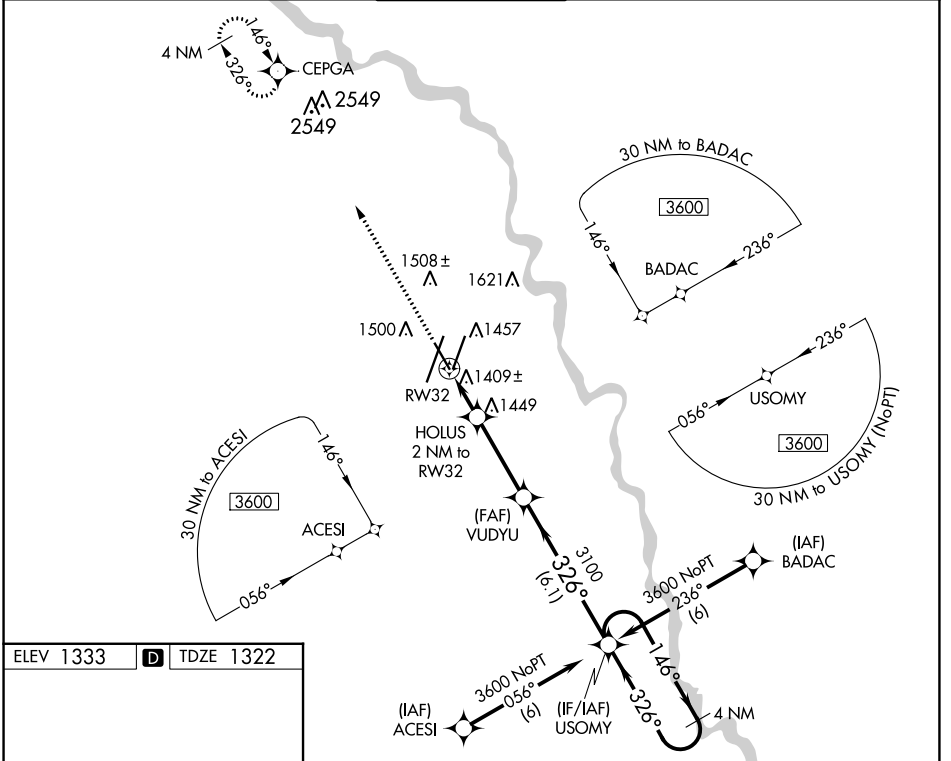
RNAV (GPS) RWY 32

WICHITA DWIGHT D EISENHOWER NTL (ICT)

▼ For uncompensated Baro-VNAV systems, LNAV/VNAV NA below -15°C (5°F) or above 54°C (130°F). DME/DME RNP-0.3 NA.

MISSED APPROACH: Climb to 3600 direct CEPGA and hold.

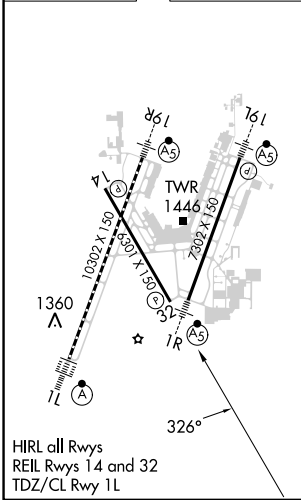
ATIS 125.15	WICHITA APP CON 126.7 353.5	WICHITA TOWER 118.2 257.8	GND CON 121.9 348.6	CLNC DEL 125.7
-----------------------	---------------------------------------	-------------------------------------	-------------------------------	--------------------------



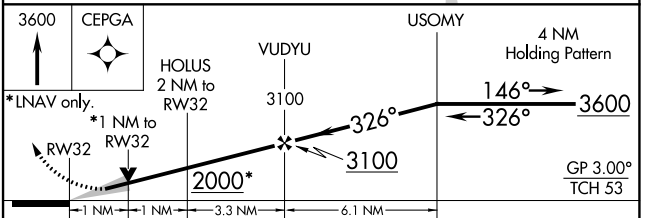
NC-2, 28 NOV 2024 to 26 DEC 2024

NC-2, 28 NOV 2024 to 26 DEC 2024

ELEV 1333 **D** TDZE 1322



HIRL all Rwy
REIL Rwy 14 and 32
TDZ/CL Rwy 1L



CATEGORY	A	B	C	D
LPV DA		1572-3/4	250 (300-3/4)	
LNAV/VNAV DA		1761-1 1/2	439 (500-1 1/2)	
LNAV MDA		1680-1 358 (400-1)		1680-1 1/4 358 (400-1 1/4)
C CIRCLING	1800-1	467 (500-1)	1980-1 3/4 647 (700-1 1/4)	1980-2 647 (700-2)