

APP CRS	Rwy Idg	7302
196°	TDZE	1320
	Apt Elev	1333


RNAV (RNP) Z RWY 19L

WICHITA DWIGHT D EISENHOWER NTL (ICT)

RNP AR APCH.

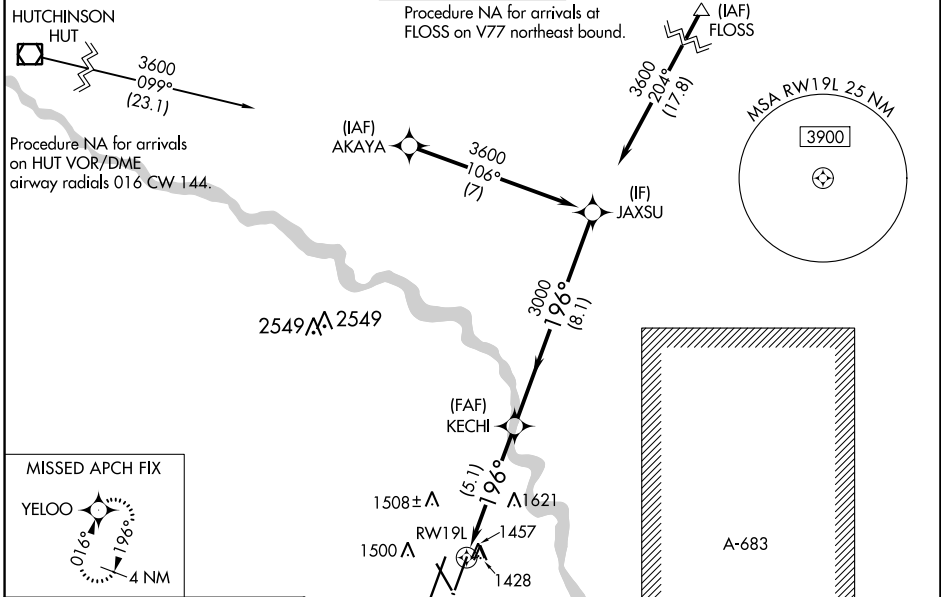
▼ For uncompensated Baro-VNAV systems, procedure NA below -15°C (5°F) or above 54°C (130°F). For inoperative MALS/R, increase RNP 0.11 all Cats visibility to ¾ mile and RNP 0.30 all Cats visibility to 1¼ mile. GPS required. Simultaneous approach authorized with ILS or LOC RWY 19R. Use of FD or AP providing RNAV track guidance required during simultaneous operations.

MALS/R

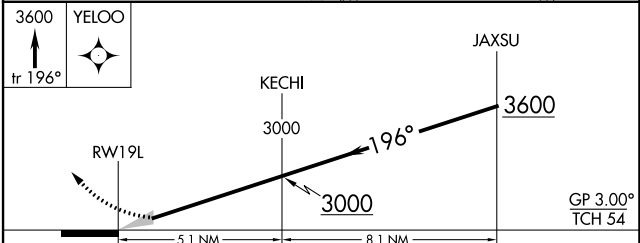
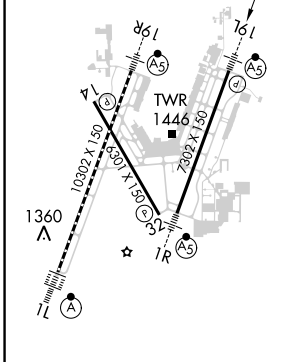


MISSED APPROACH: Climb to 3600 on track 196° to YELOO and hold.

ATIS 125.15	WICHITA APP CON 126.7 353.5	WICHITA TOWER 118.2 257.8	GND CON 121.9 348.6	CLNC DEL 125.7
------------------------------	--	--	--------------------------------------	---------------------------------



ELEV 1333	D	TDZE 1320
-----------	----------	-----------



CATEGORY	A	B	C	D
RNP 0.11 DA		1570-½	250 (300-½)	
RNP 0.30 DA		1800-1/8	480 (500-1/8)	

AUTHORIZATION REQUIRED

NC-2, 28 NOV 2024 to 26 DEC 2024

NC-2, 28 NOV 2024 to 26 DEC 2024