

WAAS CH <b>63019</b> <b>W19A</b>	APP CRS <b>196°</b>	Rwy Idg <b>10302</b> TDZE <b>1330</b> Apt Elev <b>1333</b>
--	------------------------	--

# RNAV (GPS) Y RWY 19R

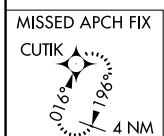
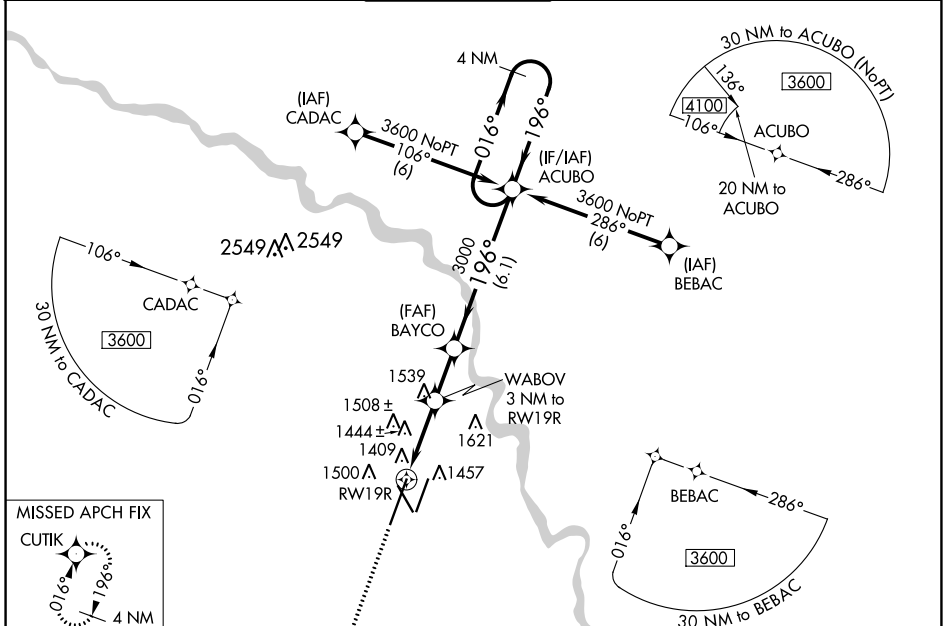
WICHITA DWIGHT D EISENHOWER NTL (ICT)

**▼** For uncompensated Baro-VNAV systems, LNAV/VNAV NA below -15°C ( 5°F) or above 54°C (130°F). DME/DME RNP-0.3 NA. For inoperative MALSR, increase LNAV Cat C/D visibility to RVR 6000. # RVR 1800 authorized with use of FD or AP or HUD to DA.

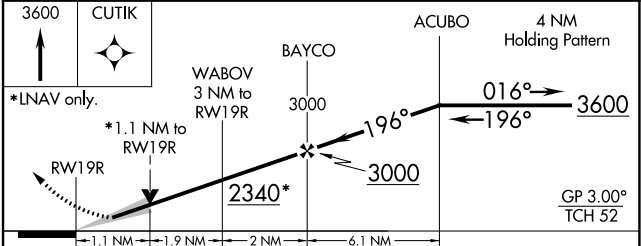
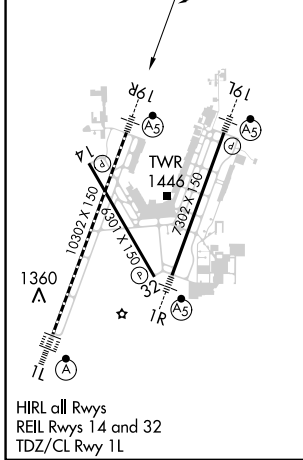
**MALSR**

**MISSED APPROACH:** Climb to 3600 direct CUTIK and hold.

ATIS <b>125.15</b>	WICHITA APP CON <b>126.7 353.5</b>	WICHITA TOWER <b>118.2 257.8</b>	GND CON <b>121.9 348.6</b>	CLNC DEL <b>125.7</b>
-----------------------	---------------------------------------	-------------------------------------	-------------------------------	--------------------------



ELEV 1333	<b>D</b>	TDZE 1330
-----------	----------	-----------



CATEGORY	A	B	C	D
LPV DA #	1530/24 200 (200-½)			
LNAV/VNAV DA	1742/45 412 (500-¾)			
LNAV MDA	1740/24	410 (500-½)	1740/40	410 (500-¾)
<b>C</b> CIRCLING	1800-1	467 (500-1)	1980-1¾ 647 (700-1¾)	1980-2 647 (700-2)

NC-2, 28 NOV 2024 to 26 DEC 2024

NC-2, 28 NOV 2024 to 26 DEC 2024