


LOC/DME I-RMZ 111.7 Chan 54	APP CRS 129°	Rwy Idg 5012 TDZE 54 Apt Elev 55
---	------------------------	---

ILS or LOC RWY 13

KNOX COUNTY RGNL (R.KD)

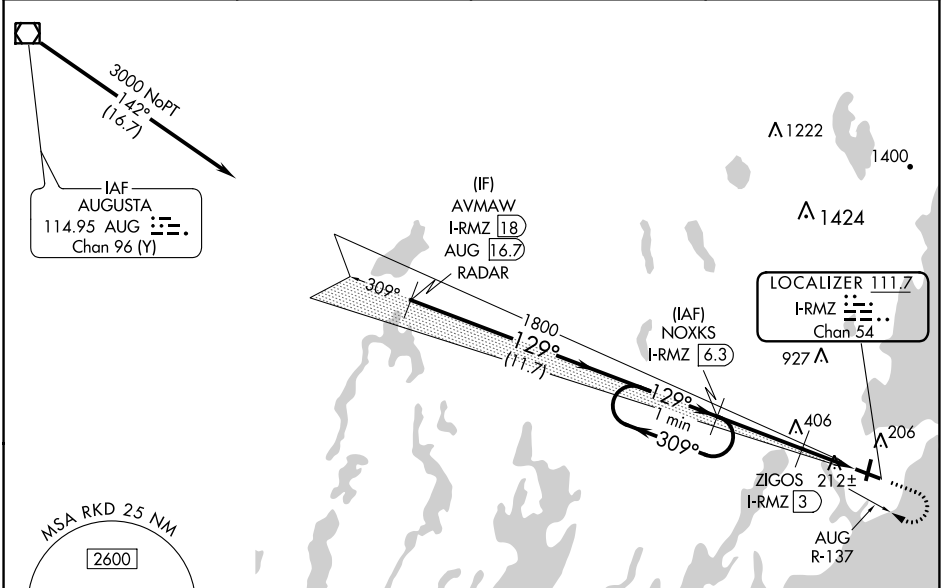
DME required.

▼ VDP NA when using Wiscasset altimeter setting. When local altimeter setting not received, use Wiscasset altimeter setting and increase all DA to 319 feet and all MDA 80 feet, increase S-LOC 13 Cats C/D visibility 3/8 SM and Circling Cat C 1/2 SM. For inop ALS when using Wiscasset altimeter setting increase S-ILS 13 all Cats visibility to 3/8 SM and S-LOC 13 Cats C/D to 1 3/8 SM.

MALSR 

MISSED APPROACH: Climb to 700 then climbing right turn to 2000 on heading 348° and on AUG R-137 to NOXKS/I-RMZ 6.3 DME and hold.

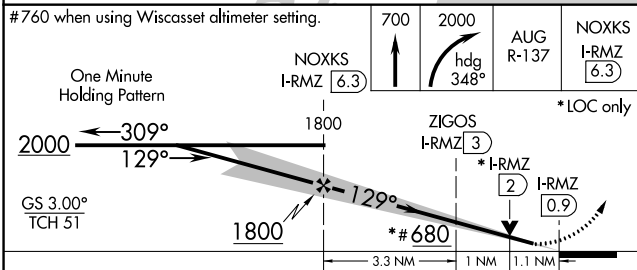
AWOS-3PT 119.025	PORTLAND APP CON* 120.4 299.2	CLNC DEL 123.8	UNICOM 123.05 (CTAF)
----------------------------	---	--------------------------	--------------------------------



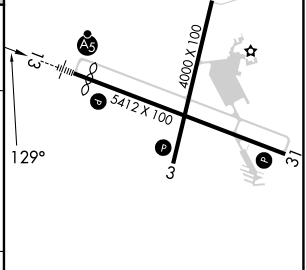
NE-1, 28 NOV 2024 to 26 DEC 2024

NE-1, 28 NOV 2024 to 26 DEC 2024


#760 when using Wiscasset altimeter setting.	700	2000	AUG R-137	NOXKS I-RMZ 6.3
One Minute Holding Pattern			hdg 348°	




ELEV 55	D	TDZE 54
---------	---	---------



CATEGORY	A	B	C	D
S-ILS 13		254-1/2	200 (200-1/2)	
S-LOC 13	440-1/2	386 (400-1/2)	440-5/8	386 (400-5/8)
CIRCLING	580-1	525 (600-1)	720-1 3/4	1140-3
			665 (700-1 3/4)	1085 (1100-3)

REIL Rwy 3 and 31 

MIRL Rwy 3-21 

HIRL Rwy 13-31 