


LOC I-AYS <b>108.3</b>	APP CRS <b>184°</b>	Rwy Idg <b>5992</b> TDZE <b>140</b> Apt Elev <b>141</b>
---------------------------	------------------------	---

# ILS Y or LOC Y RWY 19

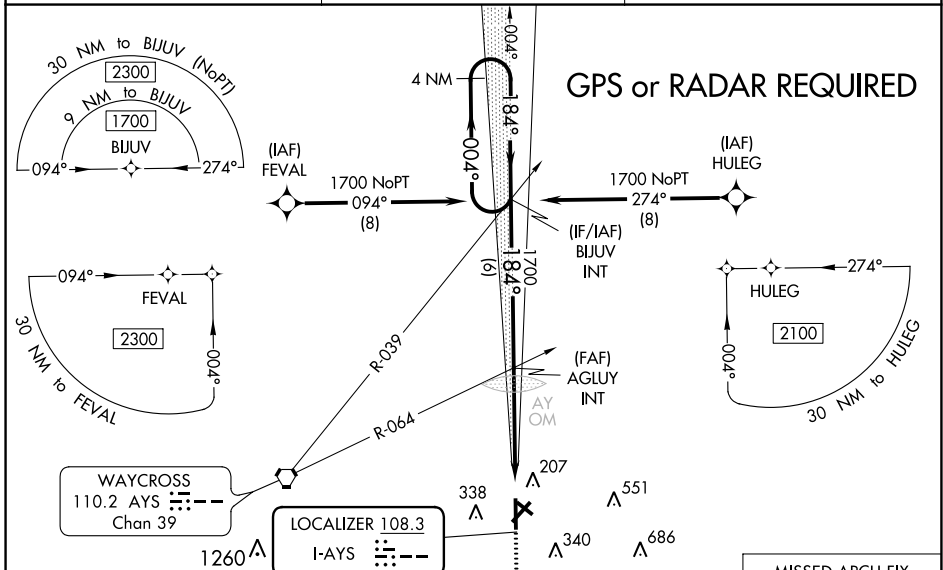
WAYCROSS-WARE COUNTY (AYS)

**GPS required.** When local altimeter setting not received, use Alma altimeter setting: increase DA to 390 feet and all MDA 60 feet; increase S-LOC 19 Cat C/D visibility 1/8 mile; increase Circling Cat C/D visibility 1/4 mile. For inop MALSRL when using Alma altimeter setting, increase S-LOC 19 Cat C/D visibility to 1 1/8 mile. Night landing Rwy 5, 31 NA.

**MALSRL** 

**MISSED APPROACH:** Climb to 1800 direct BAQAV and hold.

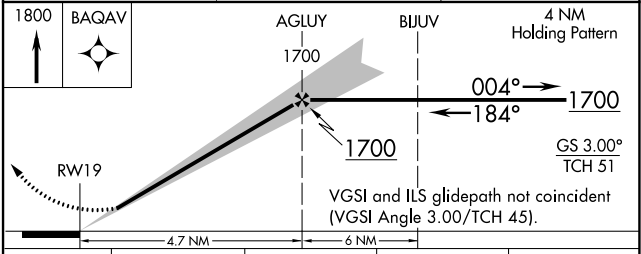
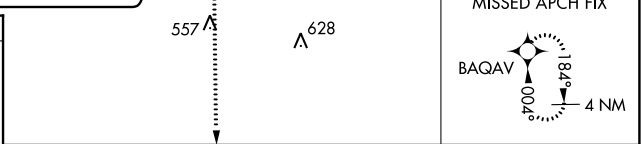
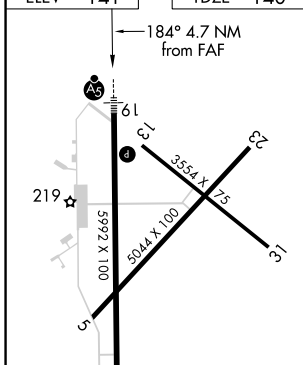
AWOS-3 <b>118.575</b>	JACKSONVILLE CENTER <b>127.575 269.025</b>	UNICOM <b>122.8 (CTAF)</b>
--------------------------	---	-------------------------------



SE-4, 28 NOV 2024 to 26 DEC 2024

SE-4, 28 NOV 2024 to 26 DEC 2024

ELEV <b>141</b>	TDZE <b>140</b>
-----------------	-----------------



CATEGORY	A	B	C	D
S-ILS 19	340-1/2		200 (200-1/2)	
S-LOC 19	600-1/2	460 (500-1/2)	600-7/8	460 (500-7/8)
<b>CIRCLING</b>	660-1 519 (600-1)	720-1 579 (600-1)	860-2 719 (800-2)	860-2 1/4 719 (800-2 1/4)