

LOC I-AYS <b>108.3</b>	APP CRS <b>184°</b>	Rwy Idg <b>5992</b>
		TDZE <b>140</b>
		Apt Elev <b>141</b>

# ILS Z or LOC Z RWY 19

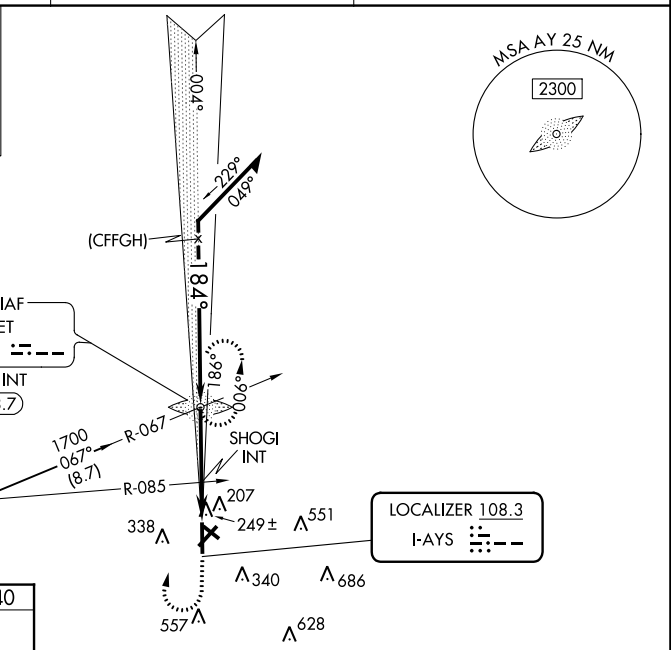
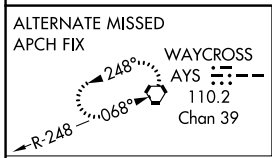
WAYCROSS-WARE COUNTY (AYS)

**ADF Required.** When local altimeter setting not received, use Alma altimeter setting: increase DA to 390 feet and all MDA 60 feet; increase S-LOC 19 Cat C/D visibility 1/8 mile; increase Circling Cat C/D visibility 1/4 mile. For inop MALSRL, increase S-LOC 19 Cat C/D visibility to 1 mile. For inop MALSRL when using Alma altimeter setting, increase S-LOC 19 Cat C/D visibility to 1 3/8 mile. Increase SHOGI Fix Minimums S-LOC 19 Cat C/D visibility to 1 1/8 mile. Night Landing Rwy 5, 31 NA.

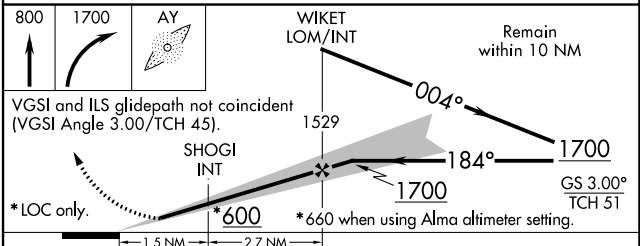
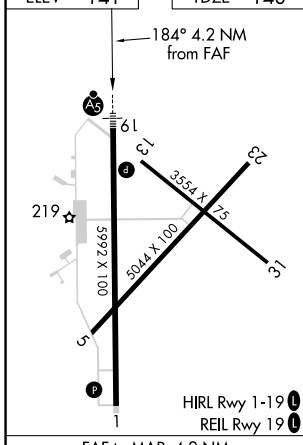
**MALSRL**

**MISSED APPROACH:** Climb to 800 then climbing right turn to 1700 direct WIKET LOM and hold.

<b>AWOS-3</b> <b>118.575</b>	<b>JACKSONVILLE CENTER</b> <b>127.575 269.025</b>	<b>UNICOM</b> <b>122.8 (CTAF)</b>
---------------------------------	------------------------------------------------------	--------------------------------------



ELEV <b>141</b>	TDZE <b>140</b>
-----------------	-----------------



CATEGORY	A	B	C	D
S-ILS 19	340-1/2		200 (200-1/2)	
S-LOC 19	600-1/2	460 (500-1/2)	600-7/8	460 (500-7/8)
<b>CIRCLING</b>	660-1 519 (600-1)	720-1 579 (600-1)	860-2 719 (800-2)	860-2 1/4 719 (800-2 1/4)
SHOGI FIX MINIMUMS (DUAL VOR RECEIVERS REQUIRED)				
S-LOC 19	500-1/2	360 (400-1/2)	500-3/8	360 (400-3/8)
<b>CIRCLING</b>	660-1 519 (600-1)	720-1 579 (600-1)	860-2 719 (800-2)	860-2 1/4 719 (800-2 1/4)

FAF to MAP 4.2 NM

Knots	60	90	120	150	180
Min:Sec	4:12	2:48	2:06	1:41	1:24

SE-4, 28 NOV 2024 to 26 DEC 2024

SE-4, 28 NOV 2024 to 26 DEC 2024