

WAAS CH 87027 W32A	APP CRS 322°	Rwy Idg 3510 TDZE 545 Apt Elev 556
--	------------------------	---

RNAV (GPS) RWY 32

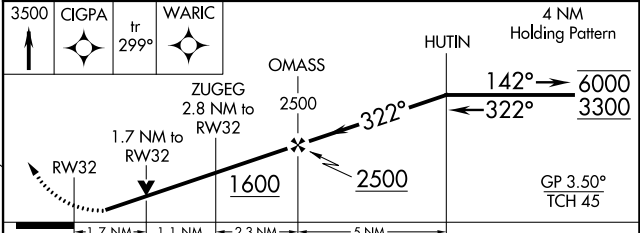
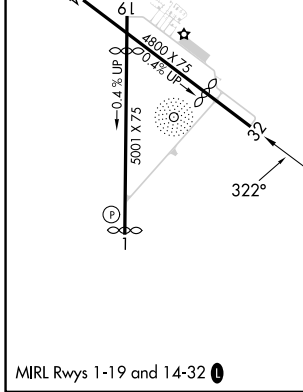
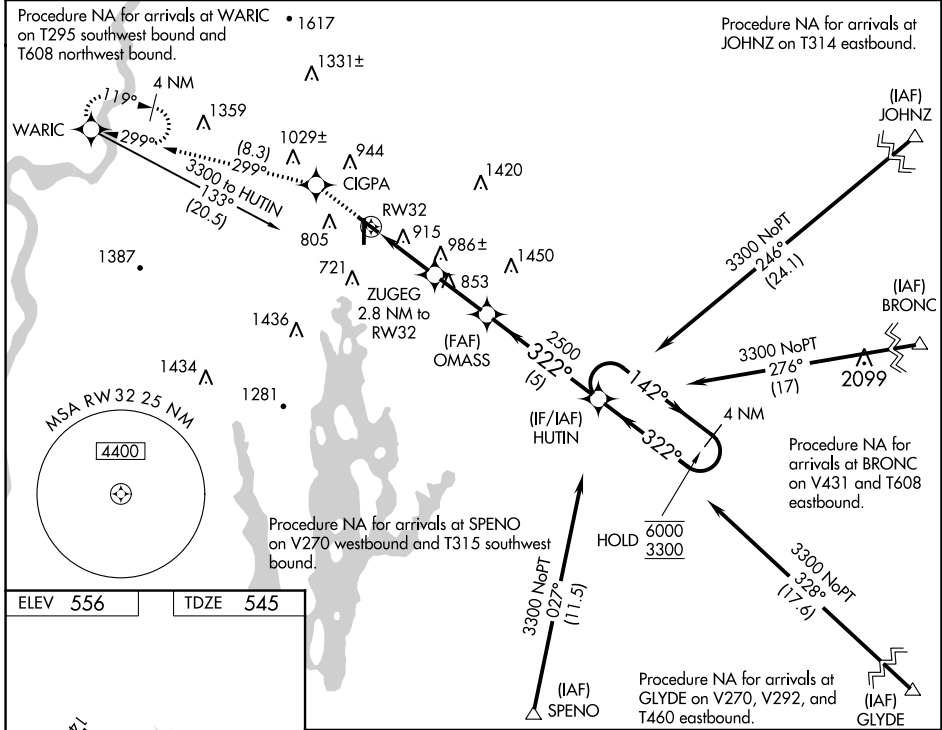
ORANGE MUNI (O.R.E.)

RNP APCH - GPS.

For uncompensated Baro-VNAV systems, LNAV/VNAV NA below -16°C or above 54°C. Rwy 32 helicopter visibility reduction below 3/4 SM NA. Circling Rwy 1, 19 NA at night. Baro-VNAV and VDP NA when using Keene altimeter setting. When local altimeter setting not received, use Keene altimeter setting and increase LPV DA to 928 and all visibilities 1/8 SM, LNAV/VNAV DA to 1343 and all visibilities 1/2 SM, and all MDAs 60 feet and LNAV visibility Cat B 1/4 SM, and Circling visibility Cat B 1/2 SM.

MISSED APPROACH: Climb to 3500 direct CIGPA and on track 299° to WARIC and hold, continue climb-in-hold to 3500.

ASOS 135.675	BOSTON CENTER 123.75 338.2	UNICOM 122.8 (CTAF) 0
-------------------------------	---	--



CATEGORY	A	B	C	D
LPV DA	873-1	328 (400-1)		NA
LNAV/VNAV DA	1288-2	743 (800-2)		NA
LNAV MDA	1240-1	695 (700-1)		NA
CIRCLING	1260-1 704 (800-1)	1320-1 764 (800-1)		NA

NE-1, 28 NOV 2024 to 26 DEC 2024

NE-1, 28 NOV 2024 to 26 DEC 2024