

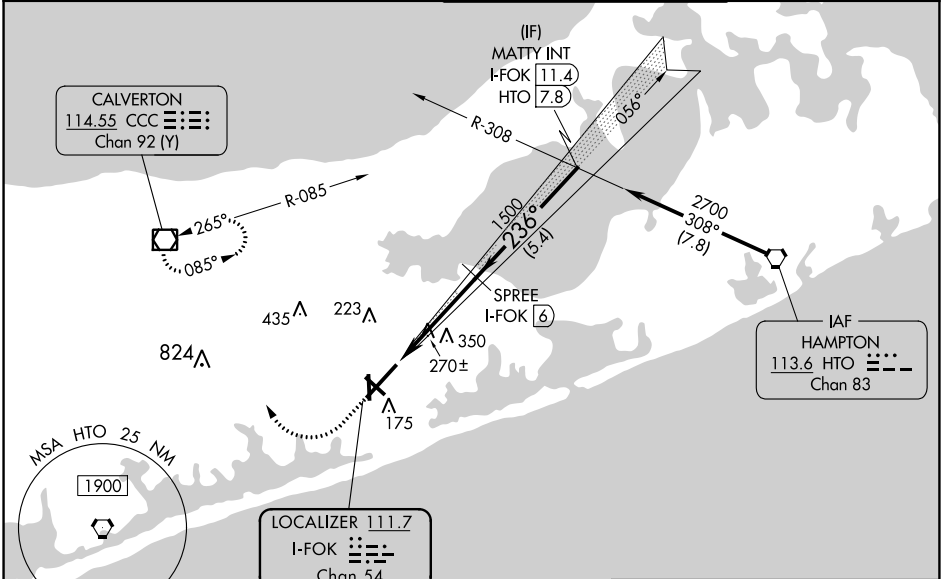
LOC/DME I-FOK 111.7 Chan 54	APP CRS 236°	Rwy Idg TDZE 66 Apt Elev 66	9002
---	------------------------	---	-------------

ILS or LOC RWY 24

FRANCIS S GABRESKI (F'OK)

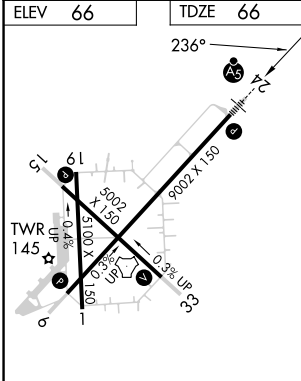
<p>Circling Rwy 15 NA at night.</p>	<p>MALS R</p>	<p>MISSED APPROACH: Climb to 880 then climbing right turn to 2000 direct CCC VOR/DME and hold.</p>
-------------------------------------	---------------	--

ASOS 119.925	NEW YORK APP CON 125.975 343.65	SUFFOLK COUNTY TOWER ★ 125.3 (CTAF) 0 236.6	GND CON 121.8 225.4
------------------------	---	---	-------------------------------



DME required for LOC only.

ALTERNATE MISSED APCH FIX



880 2000 CCC

VGSI and ILS glidepath not coincident (VGSI Angle 3.00/TCH 77).

MATTY INT I-FOK 11.4

SPREE I-FOK 6

*LOC only I-FOK 1.7

*I-FOK 2.9

1500

2700

GS 3.00° TCH 60

HIRL Rwy 6-24 (L)

MIRL Rwy 15-33 (L)

REL Rwys 6, 15, and 33 (L)

FAF to MAP 4.3 NM

Knots	60	90	120	150	180
Min:Sec	4:18	2:52	2:09	1:43	1:26

CATEGORY	A	B	C	D
S-ILS 24	266-½ 200 (200-½)			
S-LOC 24	520-½ 454 (500-½)	520-¾ 454 (500-¾)		
CIRCLING	600-1 534 (600-1)	620-1 554 (600-1)	700-1¾ 634 (700-1¾)	740-2¼ 674 (700-2¼)

NE-2, 28 NOV 2024 to 26 DEC 2024

NE-2, 28 NOV 2024 to 26 DEC 2024