

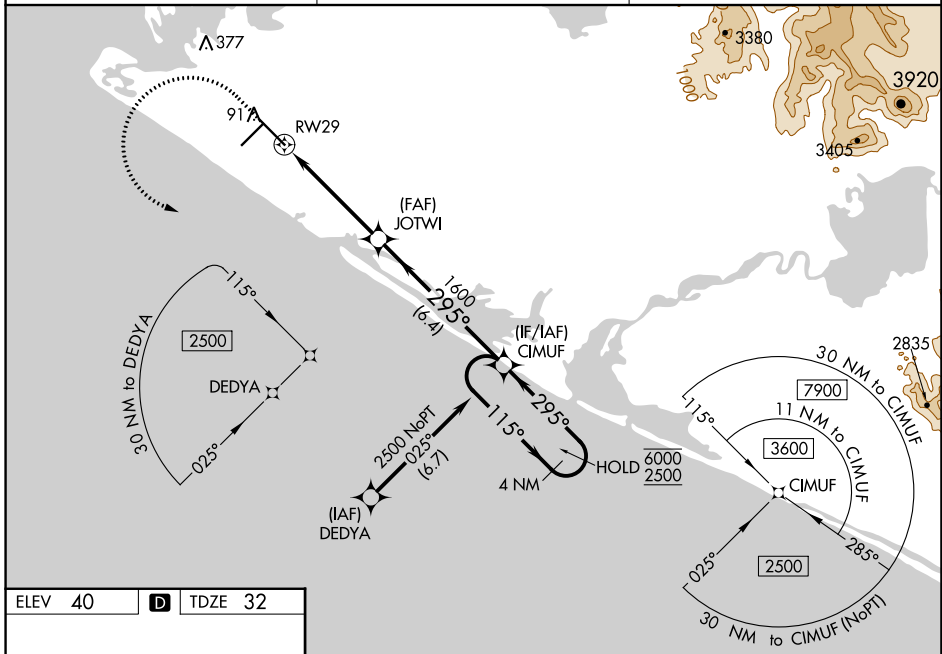
WAAS CH 66006 W29A	APP CRS 295°	Rwy Idg 7732 TDZE 32 Apt Elev 40
--	------------------------	---

RNAV (GPS) RWY 29

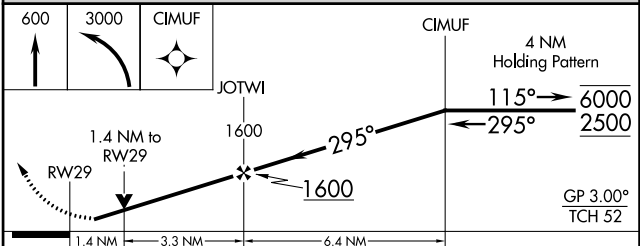
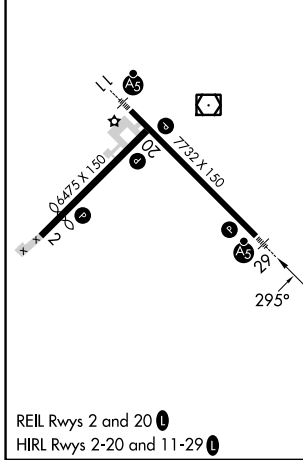
YAKUTAT (YAK) (PAYA)

RNP APCH - GPS.	MALSR	MISSED APPROACH: Climb to 600 then climbing left turn to 3000 direct CIMUF and hold, continue climb-in-hold to 3000.
<p>⚠ Circling Rwy 20 NA at night. Rwy 29 helicopter visibility reduction below 3/4 SM NA. Inop table does not apply to LPV, LNAV/VNAV all Cats, LNAV Cat A and B. When Yakutat altimeter setting not received, procedure NA. For uncompensated Baro-VNAV systems, LNAV/VNAV NA below -16°C or above 54°C. For inop ALS, increase LNAV Cat C and D visibility to 1 3/8 SM.</p>		

ASOS 135.75	ANCHORAGE CENTER 119.0 263.1	JUNEAU RADIO 123.6 (CTAF) 0
-----------------------	--	---------------------------------------



ELEV 40	D	TDZE 32
---------	----------	---------



CATEGORY	A	B	C	D
LPV DA		317-1	285 (300-1)	
LNAV/VNAV DA		409-1	377 (400-1)	
LNAV MDA		540-1	508 (500-1)	
C CIRCLING	540-1	500 (500-1)	820-2 1/4 780 (800-2 1/4)	820-2 1/2 780 (800-2 1/2)

AK, 31 OCT 2024 to 26 DEC 2024

AK, 31 OCT 2024 to 26 DEC 2024