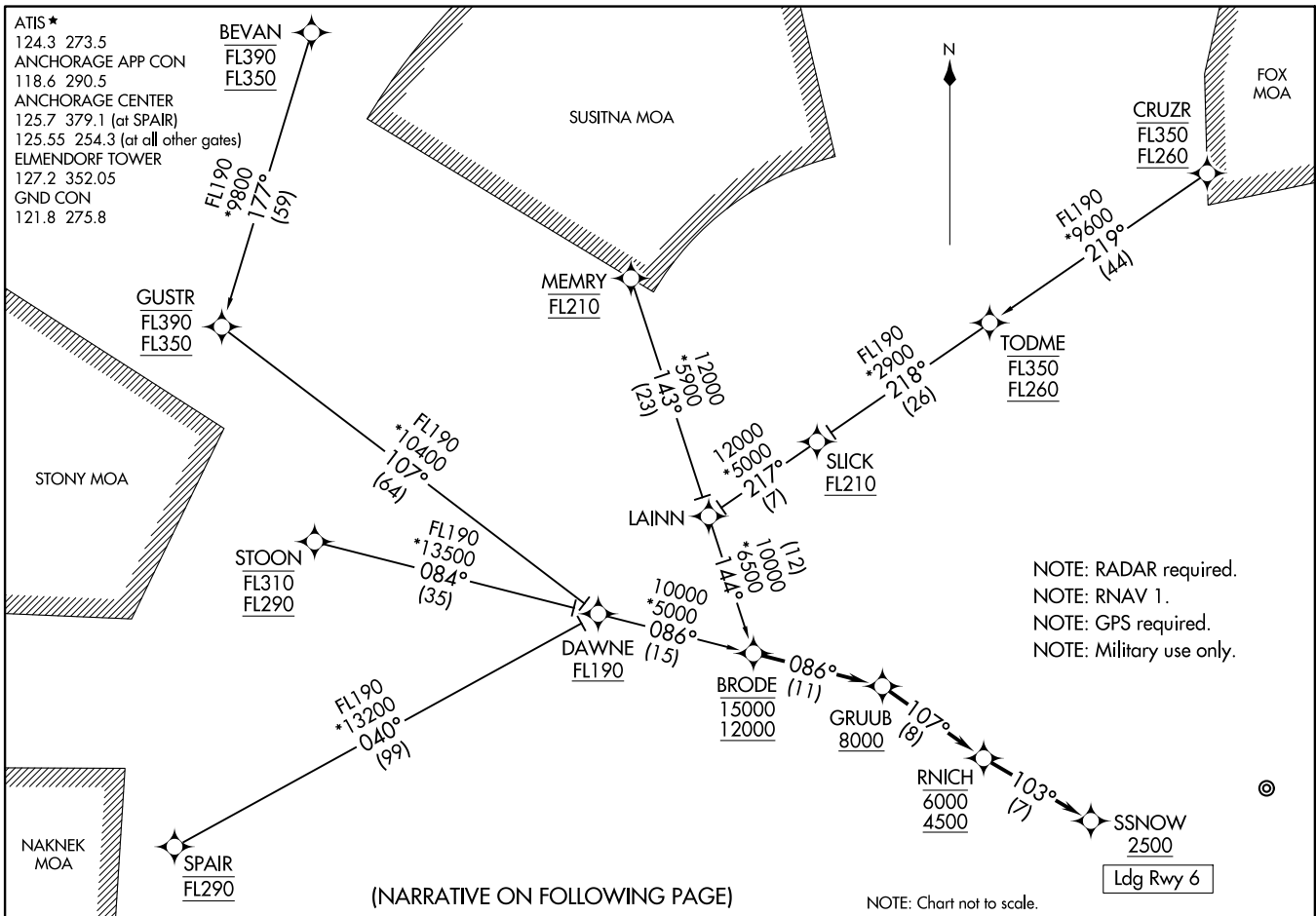


(BRODE:GRUUB1) 19115
GRUB ONE ARRIVAL (RNAV)

AL-1196 (FAA)

ELMENDORF ARB (PAEDD)
ANCHORAGE, ALASKA



GRUB ONE ARRIVAL (RNAV)
(BRODE:GRUUB1) 08NDV18

ELMENDORF ARB (PAEDD)
ANCHORAGE, ALASKA

NOTE: RADAR required.
NOTE: RNAV 1.
NOTE: GPS required.
NOTE: Military use only.

(NARRATIVE ON FOLLOWING PAGE)

NOTE: Chart not to scale.

(BRODE.GRUUB1) 18312

GRUUB ONE ARRIVAL (RNAV)

AL-1196 (FAA)

ELMENDORF AFB (PAED)
ANCHORAGE, ALASKA

ARRIVAL ROUTE DESCRIPTION

BEVAN TRANSITION (BEVAN.GRUUB1)

CRUZR TRANSITION (CRUZR.GRUUB1)

GUSTR TRANSITION (GUSTR.GRUUB1)

MEMRY TRANSITION (MEMRY.GRUUB1)

SPAIR TRANSITION (SPAIR.GRUUB1)

STOON TRANSITION (STOON.GRUUB1)

From BRODE on track 086° to cross GRUUB at or above 8000.

LANDING RUNWAY 6: From GRUUB on track 107° to cross RNICH between 4500 and 6000, then on track 103° to cross SSNOW at or above 2500. Expect ILS Z or LOC/DME RWY 6 approach.

AK, 31 OCT 2024 to 26 DEC 2024

AK, 31 OCT 2024 to 26 DEC 2024

GRUUB ONE ARRIVAL (RNAV)
(BRODE.GRUUB1) 08NOV18

ANCHORAGE, ALASKA
ELMENDORF AFB (PAED)