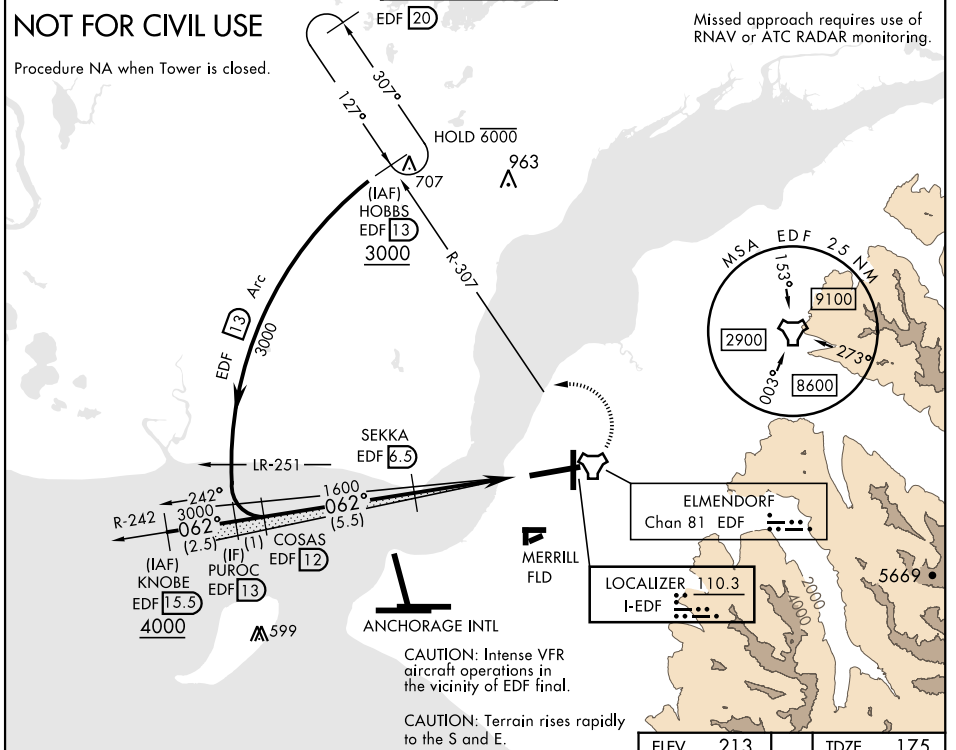


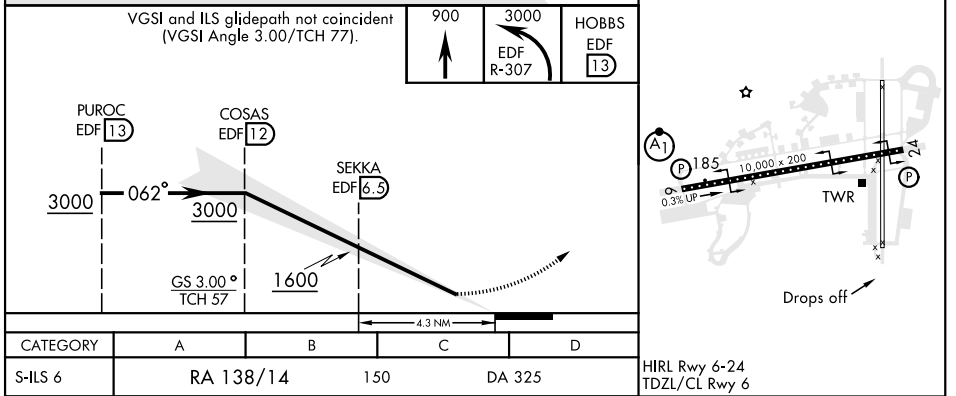
# ILS X RWY 6 (SA CAT I)

LOC I-EDF <b>110.3</b>	APCH CRS <b>062°</b>	Rwy Ldg TDZE <b>175</b> Arpt Elev <b>213</b>	[USAF]	ELMENDORF AFB (PAED)
DME required Requires MAJCOM flying authority approval and use of HUD to DA.		ALSIF-1 	MISSED APPROACH: Climb to 900, then climbing left turn to 3000 via EDF R-307 to HOBBS and hold.	

ATIS ★ <b>124.3 273.5</b>	ANCHORAGE APP CON <b>118.6 290.5</b> North <b>123.8 259.3</b> South	TOWER <b>127.2 352.05</b>	GND CON <b>121.8 275.8</b>	CLNC DEL <b>128.8 306.925</b>	PAR
------------------------------	---	------------------------------	-------------------------------	----------------------------------	-----



EMERG SAFE ALT 100 NM 15,300



# ILS X RWY 6 (SA CAT I)

AK, 31 OCT 2024 to 26 DEC 2024

AK, 31 OCT 2024 to 26 DEC 2024