

ANCHORAGE, ALASKA

RNAV (GPS) RWY 6

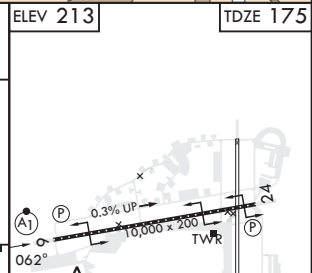
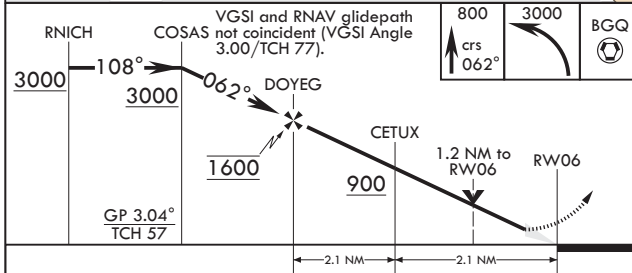
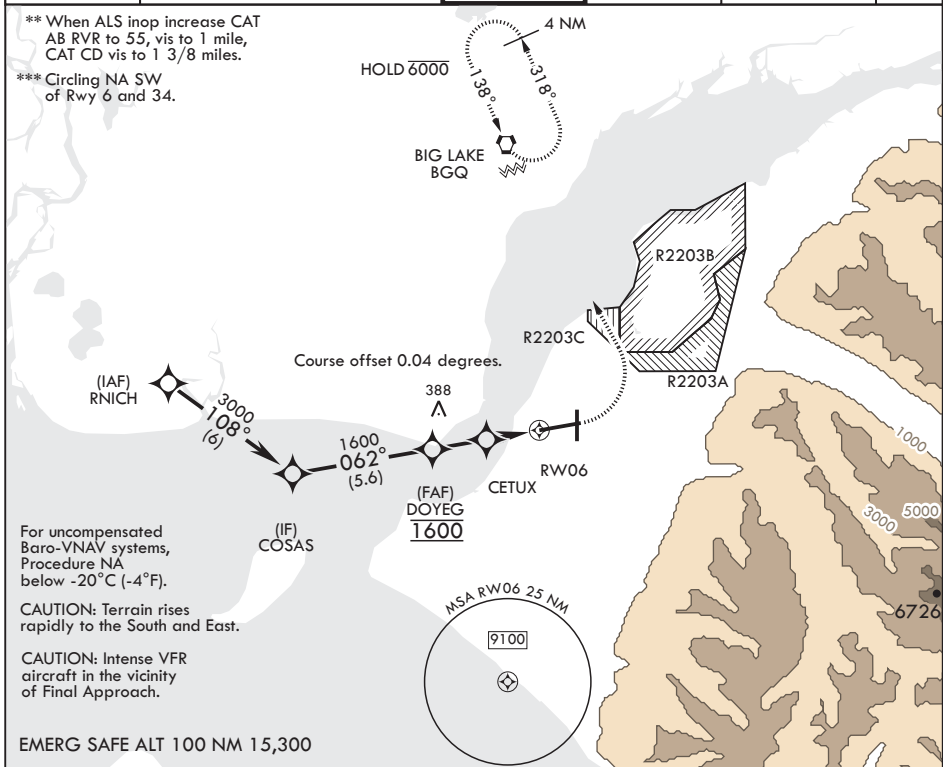
APCH CRS	Rwy Idg	10,000
062°	TDZE	175
	Arprt Elev	213

-(USAF)

ELMENDORF AFB (PAED)

RNP APCH	ALSF-1	MISSED APPROACH: Climb to 800 then climbing left turn to 3000 direct BGQ and hold.
GPS required.		
* When ALS inop increase RVR to 60, vis to 1 1/8 miles.		

ATIS*	ANCHORAGE APP CON/DEP CON	TOWER	GND CON	CLNC DEL	PAR
124.3 273.5	118.6 290.5	127.2 352.05	121.8 275.8	128.8 306.925	



CATEGORY	A	B	C	D
LNAV/VNAV DA*	561/35	386	(400-5/4)	576/40 401 (400-3/4)
LNAV MDA**	640/24 465 (500-1/2)		640/50 465 (500-1)	
CIRCLING***	840-1 627 (700-1)		920-2 707 (800-2)	1020-2 1/2 807 (900-2 1/2)

HIRL Rwy 6-24	24
TDZL/CL Rwy 6	

ANCHORAGE, ALASKA
Amdt 5 25JAN24

61°15'N - 149°48'W

ELMENDORF AFB (PAED)

RNAV (GPS) RWY 6

AK, 31 OCT 2024 to 26 DEC 2024

AK, 31 OCT 2024 to 26 DEC 2024