

TACAN Y RWY 16

TACAN EDF Chan 81	APCH CRS 133°	Rwy Idg TDZE Arprt Elev 7493 213 213
-----------------------------	-------------------------	--

[USAF]

ELMENDORF AFB (PAED)

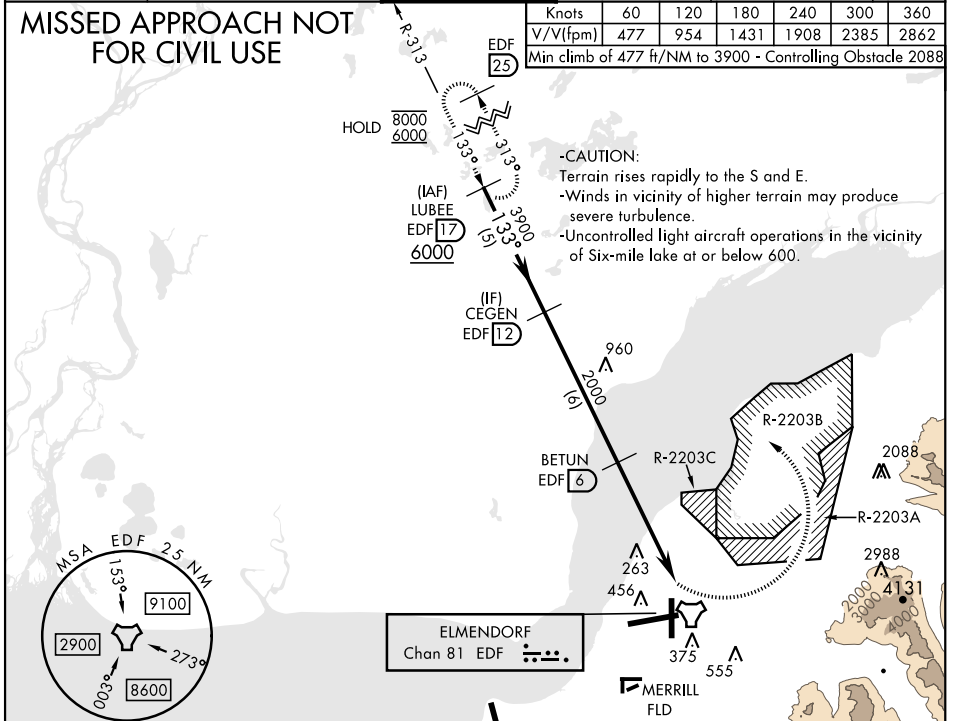
⚠ * Circling not authorized SW of Rwy 6 and 34.
CAT E aircraft remain within 4.5 NM of runway when executing circling maneuver.

MISSED APPROACH: Climbing left turn to 6000 via EDF R-313 to LUBEE and hold. Continue climb-in-hold to 6000.

ATIS ★ 124.3 273.5	ANCHORAGE APP CON 118.6 290.5 (N) 123.8 259.3 (S)	TOWER 127.2 352.05	GND CON 121.8 275.8	CLNC DEL 128.8 306.925	PAR
------------------------------	---	------------------------------	-------------------------------	----------------------------------	-----

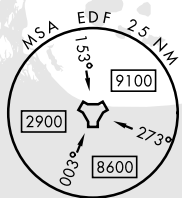
Knots	60	120	180	240	300	360
V/V(fpm)	477	954	1431	1908	2385	2862
Min climb of 477 ft/NM to 3900 - Controlling Obstacle 2088						

MISSED APPROACH NOT FOR CIVIL USE

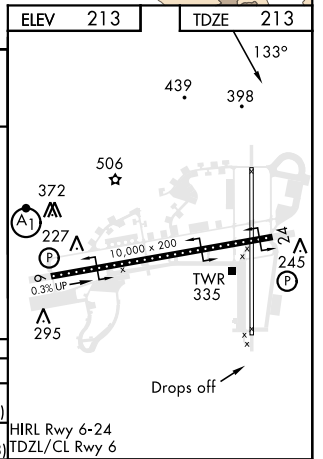
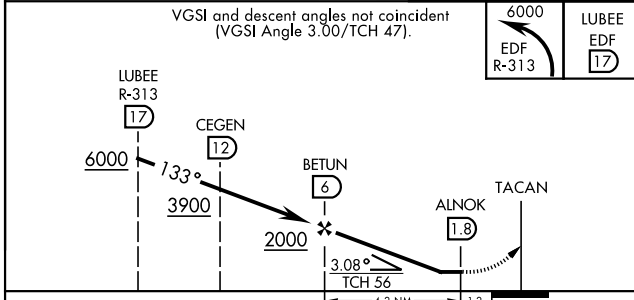


AK, 31 OCT 2024 to 26 DEC 2024

AK, 31 OCT 2024 to 26 DEC 2024



EMERG SAFE ALT 100 NM 15,300	ANCHORAGE INTL ELEV 213	TDZE 213
------------------------------	----------------------------	----------



CATEGORY	A	B	C	D	E
S-16	NOT AUTHORIZED				
CIRCLING*	NOT AUTHORIZED				
	680-1 $\frac{3}{8}$ 467 (500-1 $\frac{3}{8}$) 1480-3 1267 (1300-3)				

TACAN Y RWY 16