

WAAS CH <b>48924</b> <b>W24A</b>	APP CRS <b>239°</b>	Rwy Idg TDZE Apt Elev	<b>5100</b> <b>1719</b> <b>1720</b>
--	------------------------	-----------------------------	---

# RNAV (GPS) RWY 24

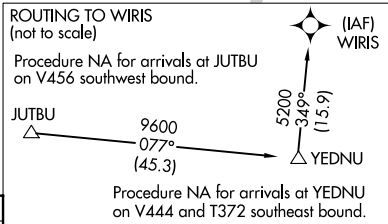
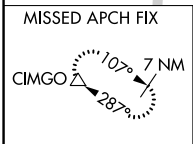
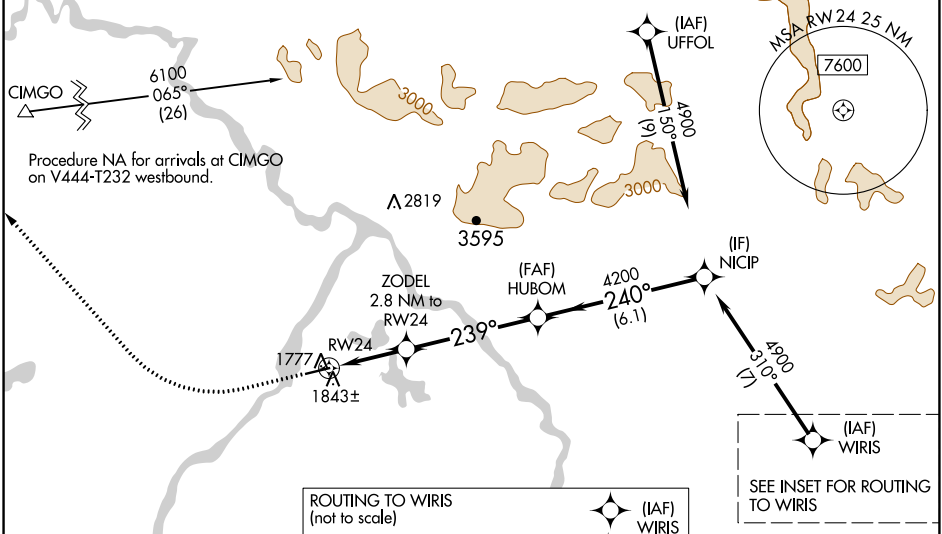
NORTHWAY (ORT)(PAOR)

RNP APCH - GPS.

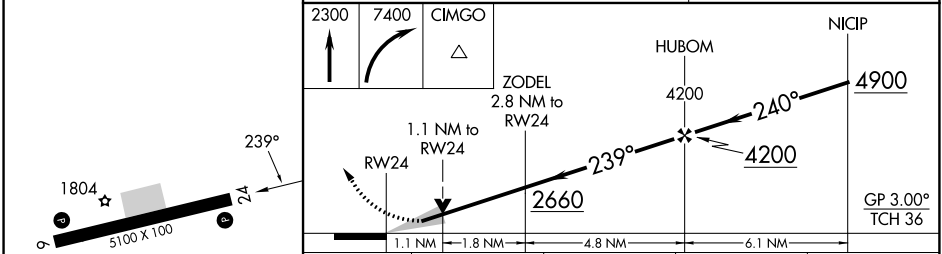
MISSED APPROACH: Climb to 2300 then climbing right turn to 7400 direct CIMGO and hold, continue climb-in-hold to 7400.

For uncompensated Baro-VNAV systems, LNAV/VNAV NA below -24°C or above 54°C.  
 -37°C

ASOS <b>135.4</b>	ANCHORAGE CENTER <b>126.55 323.0</b>	NORTHWAY RADIO <b>123.6 (CTAF) 0</b>
----------------------	---	---



ELEV 1720	TDZE 1719
-----------	-----------



CATEGORY	A	B	C	D
LPV DA	1969-3/4 250 (300-3/4)			
LNAV/VNAV DA	2004-7/8 285 (300-7/8)			
LNAV MDA	2100-1 381 (400-1)		2100-1 1/8 381 (400-1 1/8)	
CIRCLING	2160-1 440 (500-1)	2180-1 460 (500-1)	2240-1 1/2 520 (600-1 1/2)	2340-2 620 (700-2)

AK, 31 OCT 2024 to 26 DEC 2024

AK, 31 OCT 2024 to 26 DEC 2024