

RNAV (GPS) RWY 19

APCH CRS	Rwy Idg	8000
187°	TDZE	1239
	Arprt Elev	1285

[USA]

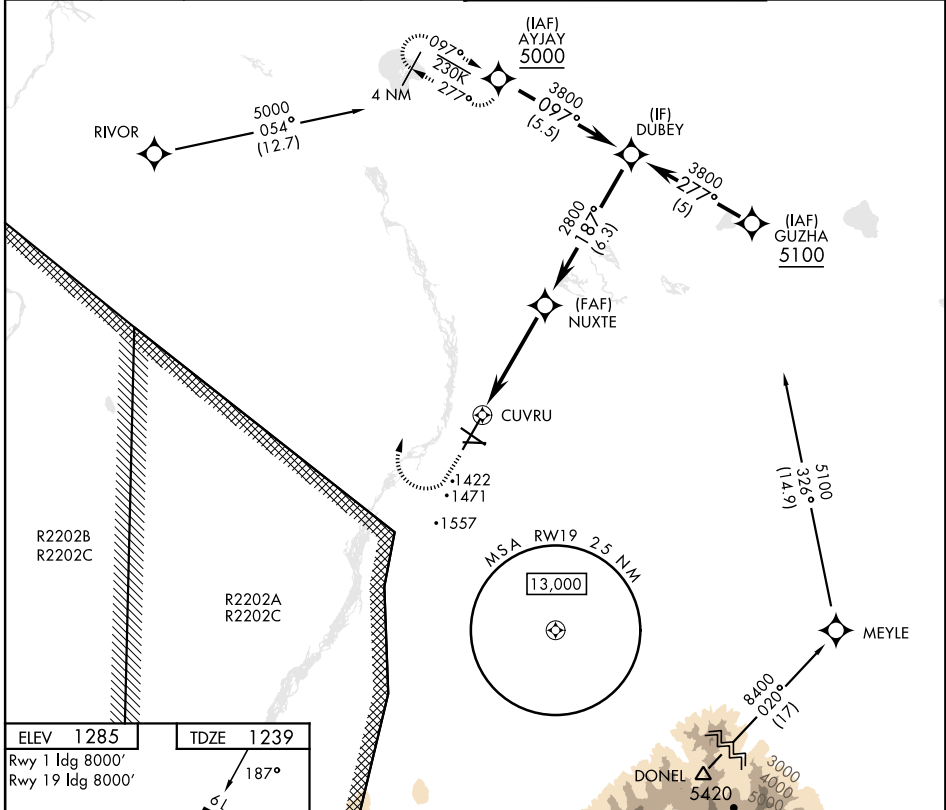
ALLEN AAF (PABI)

RNP APCH - GPS

▼ * Circling not authorized East of Rwy 1-19.

MISSED APPROACH: Climbing right turn to 5000, direct AYJAY and hold.

ATIS	ASOS	ANCHORAGE CENTER	CTAF	ALLEN TOWER *	GND CON
132.075	135.65	135.3 322.5	122.9	119.8 235.775 40.8 (E) FM	118.225 251.05



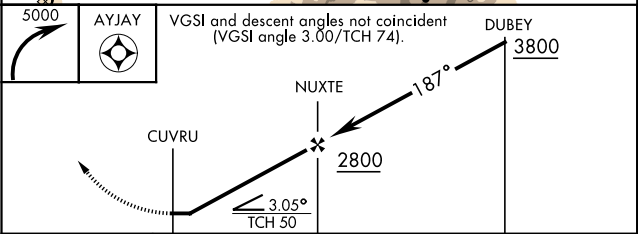
AK, 31 OCT 2024 to 26 DEC 2024

AK, 31 OCT 2024 to 26 DEC 2024

ELEV 1285	TDZE 1239
Rwy 1 Idg 8000'	Rwy 19 Idg 8000'

Detailed approach diagram showing Rwy 1 and Rwy 19. Rwy 1 has a 187° heading and a 0.7% up slope. Rwy 19 has a 29° heading and a 3.05% slope. Dimensions include 6115 x 150 and 4057 x 88 ASSAULT STRIP. Obstacles are marked with 'P' and 'A' symbols. Elevation markers include 1294, 1325, and 1343. A TWIR 1343 is also indicated.

HIRL Rwy 1-19 and 11-29 **Ⓛ**
MIRL Rwy 070°-250° **Ⓛ**
REIL Rwy 11-29



CATEGORY	A	B	C	D
LNAV MDA	1740-1 501 (500-1)	1740-1½ 501 (500-1½)		
C CIRCLING*	1740-1 455 (500-1)	1780-1 495 (500-1)	1860-1½ 575 (600-1½)	2040-2½ 755 (800-2½)

RNAV (GPS) RWY 19