

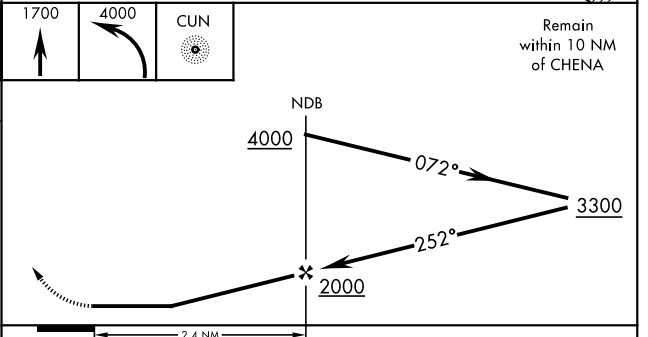
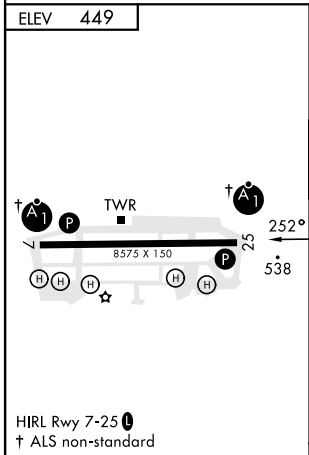
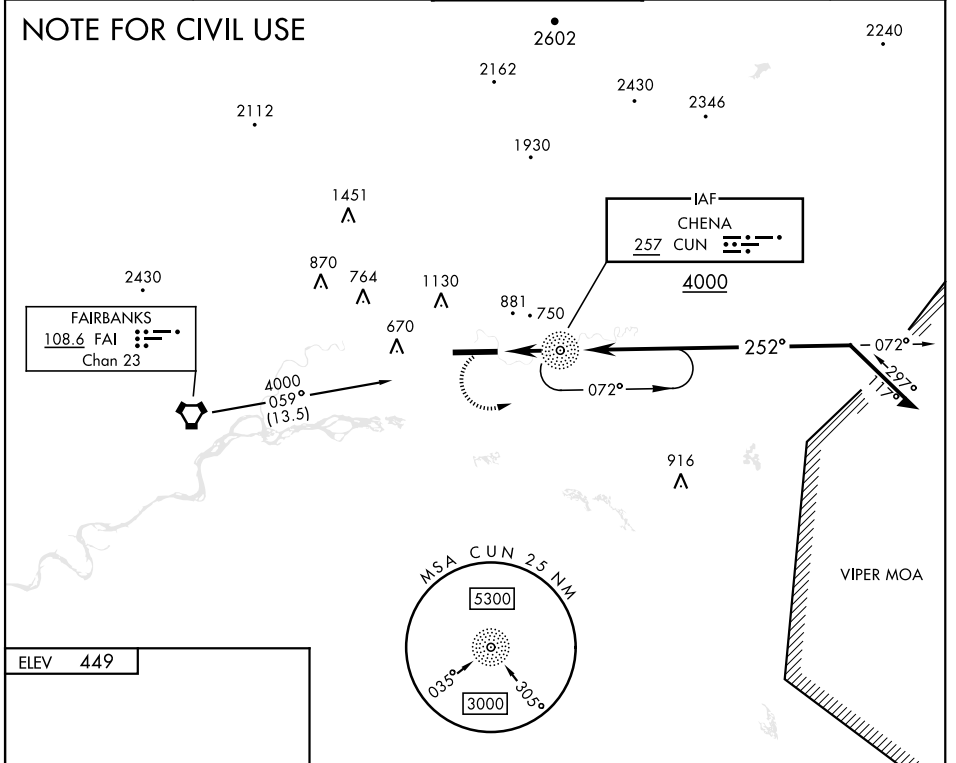
NDB CUN 257	APCH CRS 252°	Rwy Idg TDZE Arprt Elev	N/A N/A 449
-----------------------	-------------------------	----------------------------	--

AL-1219 [USA]

LADD AAF (PAFB)

<p>▽ * Circling not authorized N of Rwy 7-25.</p>		<p>MISSED APPROACH: Climb to 1700 then climbing left turn to 4000 direct CUN NDB and hold, continue climb-in-hold to 4000.</p>		
<p>ATIS 134.25</p>	<p>FAIRBANKS APP CON 127.1 251.1 360°- 179° 125.35 363.2 180°- 359°</p>	<p>TOWER* 125.0 (CTAF) 0 284.6</p>	<p>GND CON 121.7 263.15</p>	<p>ASR/PAR</p>

NOTE FOR CIVIL USE



FAF to MAP 2.4 NM					CATEGORY	A	B	C	D
Knots	60	90	120	150	180	1640-1¼ 1191 (1200-1¼)	1640-1½ 1191 (1200-1½)	1640-3 1191 (1200-3)	1640-3 1191 (1200-3)
Min:Sec	2:24	1:36	1:12	0:58	0:48	<p>CIRCLING*</p>			

AK, 31 OCT 2024 to 26 DEC 2024

AK, 31 OCT 2024 to 26 DEC 2024