

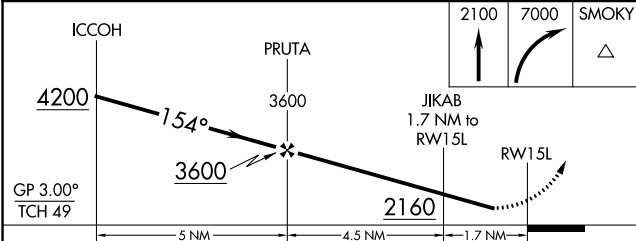
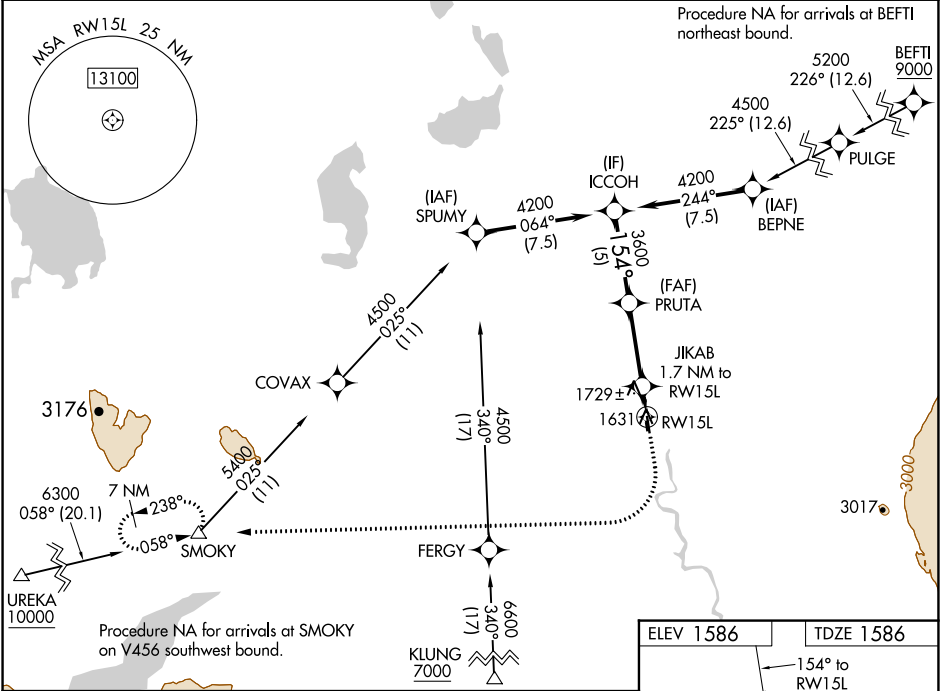
WAAS CH <b>82543</b> <b>W15A</b>	APP CRS <b>154°</b>	Rwy ldg TDZE Apt Elev	<b>5001</b> <b>1586</b> <b>1586</b>
--	------------------------	-----------------------------	---

# RNAV (GPS) RWY 15L

GULKANA (GKN) (PAGK)

RNP APCH-GPS.	MISSED APPROACH: Climb to 2100 then climbing right turn to 7000 direct SMOKY and hold, continue climb-in-hold to 7000.
---------------	--

ASOS <b>134.85</b>	ANCHORAGE CENTER <b>119.5 317.5</b>	CTAF <b>122.9</b>
-----------------------	--	----------------------



ELEV 1586	TDZE 1586
MIRL RWY 15L-33R	

CATEGORY	A	B	C	D
LNVA/VNAV DA	1836-1		250 (300-1)	
LPV DA	1877-1		291 (300-1)	
LNVA MDA	2040-1	454 (500-1)	2040-1 $\frac{3}{8}$	454 (500-1 $\frac{3}{8}$ )
<b>C</b> CIRCLING	2040-1 454 (500-1)	2080-1 494 (500-1)	2080-1 $\frac{1}{2}$ 494 (500-1 $\frac{1}{2}$ )	2200-2 614 (700-2)

AK, 31 OCT 2024 to 26 DEC 2024

AK, 31 OCT 2024 to 26 DEC 2024