

WAAS CH 40343 W33A	APP CRS 334°	Rwy Idg TDZE Apt Elev	5001 1573 1586
----------------------------------------	------------------------	-----------------------------	-------------------------------------------

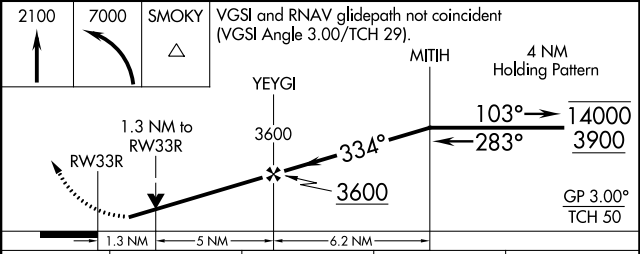
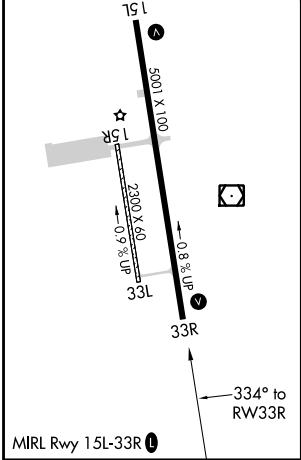
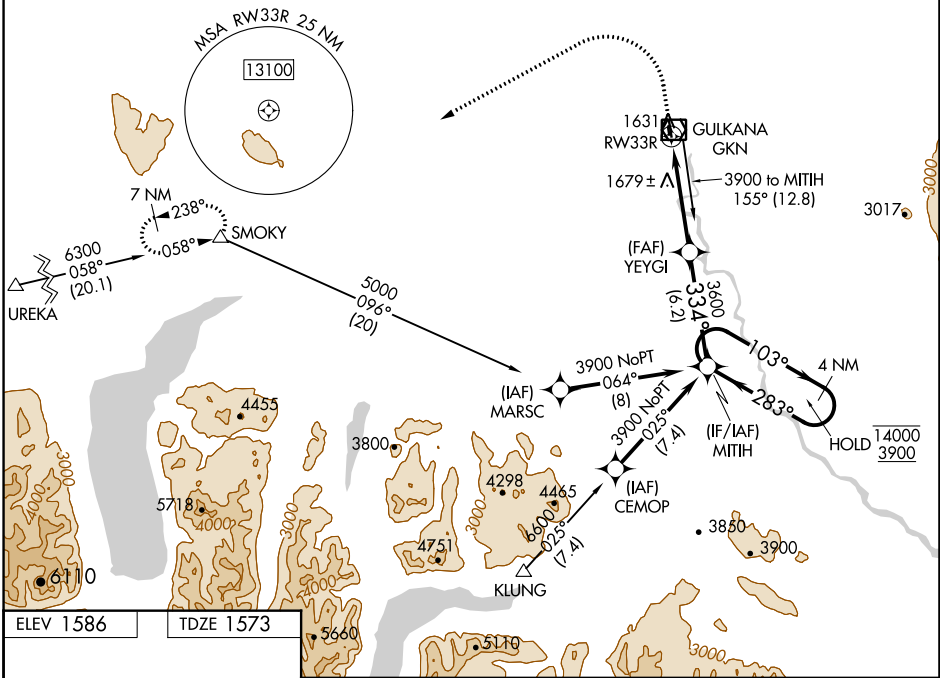
RNAV (GPS) RWY 33R

GULKANA (GKN) (PAGK)

RNP APCH-GPS.
 ⚠ Circling Rwy 15R, 33L NA at night. Rwy 33R helicopter visibility reduction below 3/4 SM NA. For uncompensated Baro-VNAV systems, LNAV/VNAV NA below -25°C or above 54°C.

MISSED APPROACH: Climb to 2100 then climbing left turn to 7000 direct SMOKY and hold, continue climb-in-hold to 7000.

ASOS 134.85	ANCHORAGE CENTER 119.5 317.5	CTAF 122.9
-----------------------	----------------------------------------	----------------------



CATEGORY	A	B	C	D
LPV DA		1823-1	250 (300-1)	
LNAV/VNAV DA		1890-1	317 (400-1)	
LNAV MDA	2000-1	427 (500-1)	2000-1 1/4	427 (500-1 1/4)
C CIRCLING	2040-1 454 (500-1)	2080-1 494 (500-1)	2080-1 1/2 494 (500-1 1/2)	2200-2 614 (700-2)

AK, 31 OCT 2024 to 26 DEC 2024

AK, 31 OCT 2024 to 26 DEC 2024