

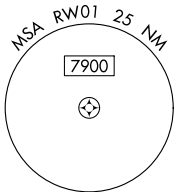
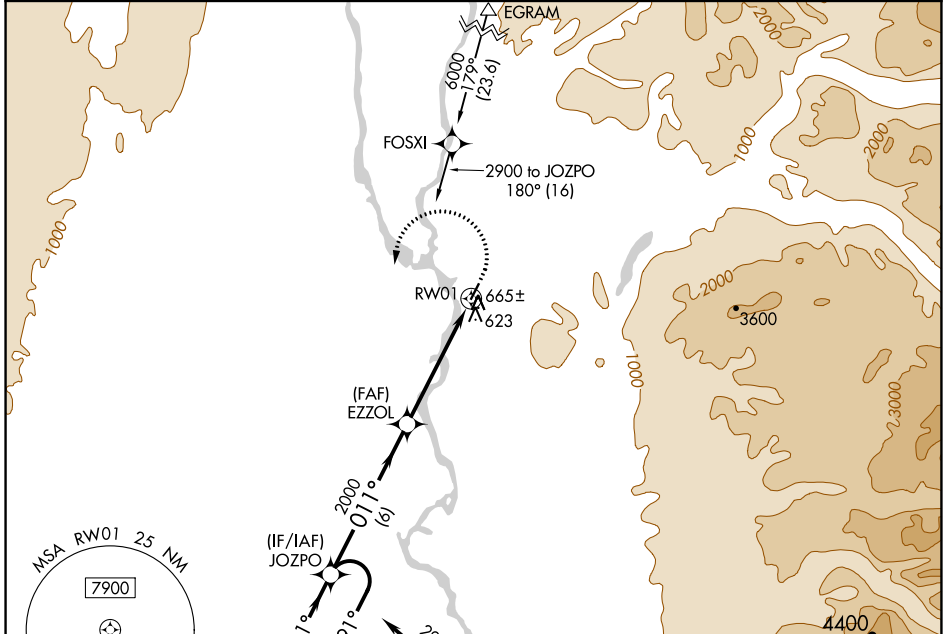
APP CRS	Rwy Idg	3500
011°	TDZE	363
	Apt Elev	365

RNAV (GPS) RWY 1

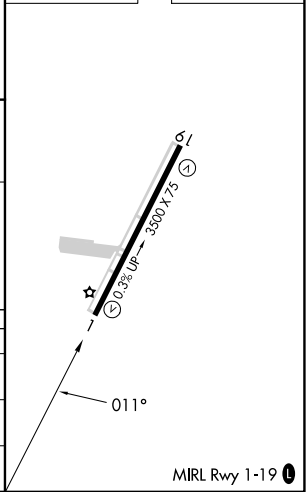
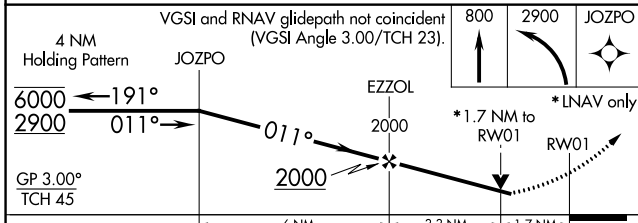
TALKEETNA(TKA)(PATK)

RNP APCH.	MISSED APPROACH: Climb to 800 then climbing left turn to 2900 direct JOZPO and hold.
<p>▼ Circling NA east of Rwy 1-19. Rwy 1 helicopter visibility reduction below ¾ SM NA. For uncompensated Baro-VNAV systems, LNAV/VNAV NA below -20°C or above 54°C.</p> <p>⚠ -29°C</p>	

AFIS 135.2	ANCHORAGE CENTER 125.55 254.3	TALKEETNA RADIO 123.6 (CTAF) 0	UNICOM 123.0
----------------------	---	--	------------------------



ELEV 365	TDZE 363
----------	----------



CATEGORY	A	B	C	D
LNAV/VNAV DA	922-2 559 (600-2)			
LNAV MDA	920-1 557 (600-1)	920-1½ 557 (600-1½)		
CIRCLING	960-1 595 (600-1)	1040-2 675 (700-2)	1200-2¾ 835 (900-2¾)	

AK, 31 OCT 2024 to 26 DEC 2024

AK, 31 OCT 2024 to 26 DEC 2024