

APP CRS	Rwy Idg	<b>3500</b>
<b>171°</b>	TDZE	<b>365</b>
	Apt Elev	<b>365</b>

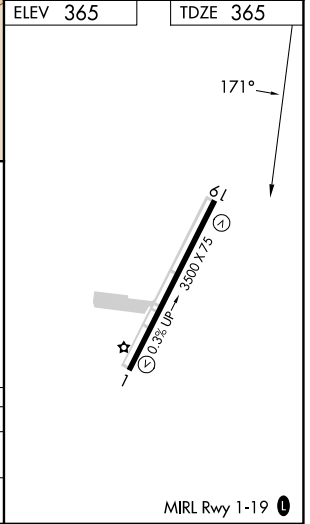
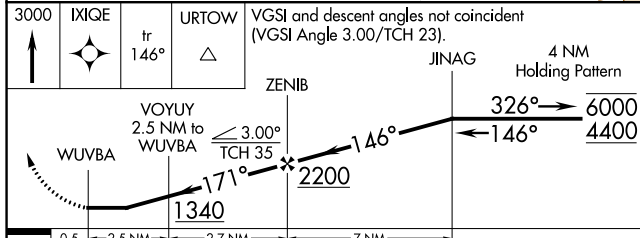
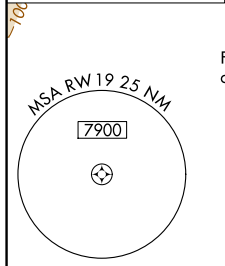
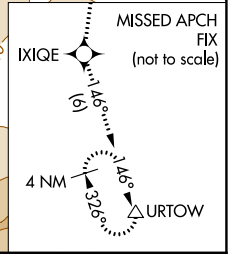
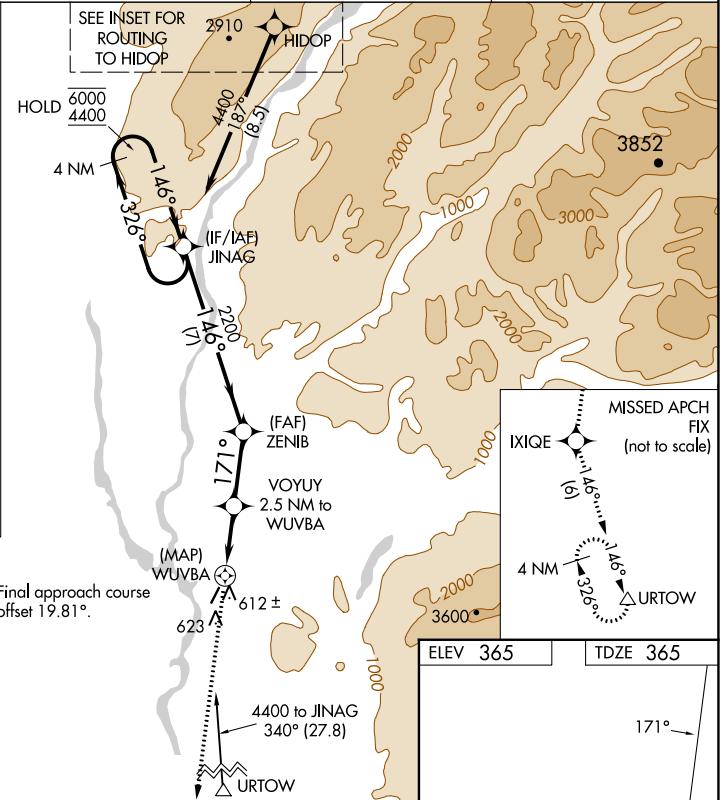
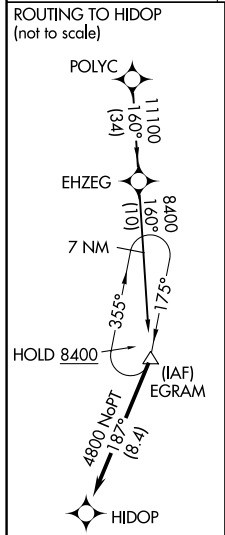
# RNAV (GPS) RWY 19

TALKEETNA(TKA)(PATK)

RNP APCH.  
 ⚠ Circling NA east of Rwy 1-19. Rwy 19 helicopter visibility reduction below 1 SM NA. Straight-in Rwy 19 NA at night, -29°C  
 ⚠ Circling Rwy 19 NA at night.

MISSED APPROACH: Climb to 3000 direct IXIQE and on track 146° to URTOW and hold.

AFIS <b>135.2</b>	ANCHORAGE CENTER <b>125.55 254.3</b>	TALKEETNA RADIO <b>123.6 (CTAF) 0</b>	UNICOM <b>123.0</b>
----------------------	---	--	------------------------



CATEGORY	A	B	C	D
LNAV MDA	880-1	515 (600-1)	880-1 $\frac{3}{8}$	515 (600-1 $\frac{3}{8}$ )
CIRCLING	880-1	515 (600-1)	1040-2 675 (700-2)	1200-2 $\frac{3}{4}$ 835 (900-2 $\frac{3}{4}$ )

AK, 31 OCT 2024 to 26 DEC 2024

AK, 31 OCT 2024 to 26 DEC 2024