

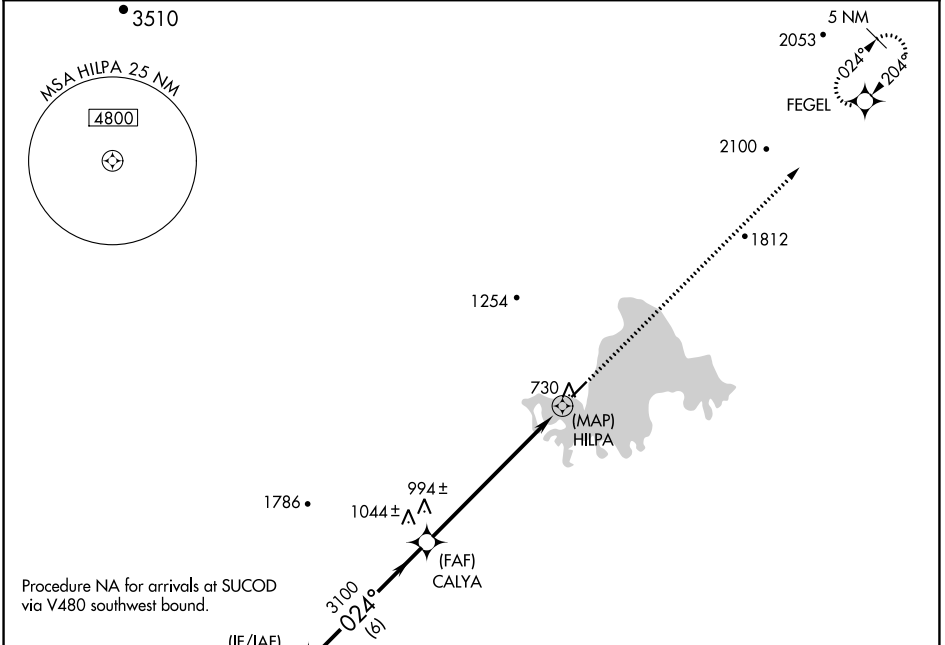
APP CRS <b>024°</b>	Rwy Idg <b>4184</b> TDZE <b>682</b> Apt Elev <b>682</b>
------------------------	---

# RNAV (GPS) RWY 3

MINCHUMINA (MHM) (PAMH)

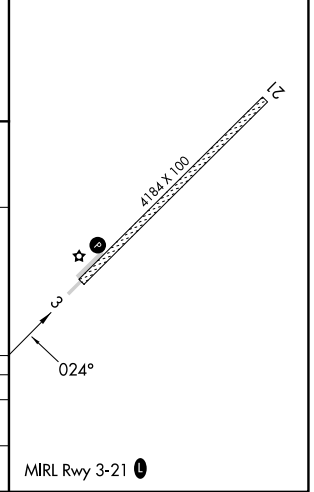
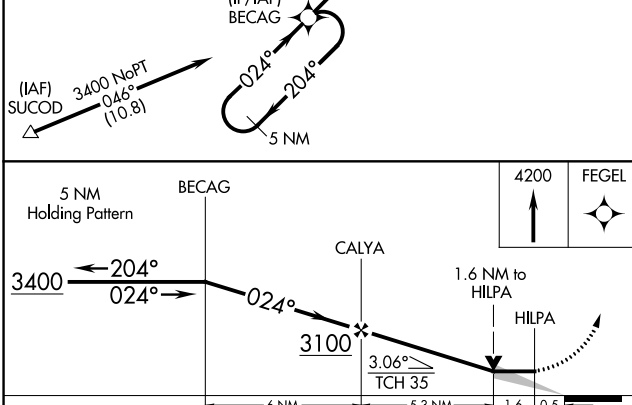
 -36°C	DME/DME RNP-0.3 NA. Circling NA west of Rwy 3-21.	MISSED APPROACH: Climb to 4200 direct FEGEL and hold.
-----------	--	---

AWOS-3P <b>135.55</b>	ANCHORAGE CENTER <b>120.9 319.2</b>	FAIRBANKS RADIO <b>122.2</b>	CTAF <b>122.9 0</b>
--------------------------	--	---------------------------------	------------------------



Procedure NA for arrivals at SUCOD via V480 southwest bound.

ELEV 682	TDZE 682
----------	----------



CATEGORY	A	B	C	D
LNVA MDA	1360-1	678 (700-1)	1360-2	678 (700-2)
CIRCLING	1360-1	678 (700-1)	1460-2¼ 778 (800-2¼)	1460-2½ 778 (800-2½)

MIRL Rwy 3-21 0

AK, 31 OCT 2024 to 26 DEC 2024

AK, 31 OCT 2024 to 26 DEC 2024