

LOC/DME I-MCG <b>108.5</b> Chan <b>22</b>	APP CRS <b>162°</b>	Rwy Idg TDZE Apt Elev	<b>4843</b> <b>343</b> <b>343</b>
---	------------------------	-----------------------------	---

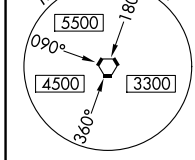
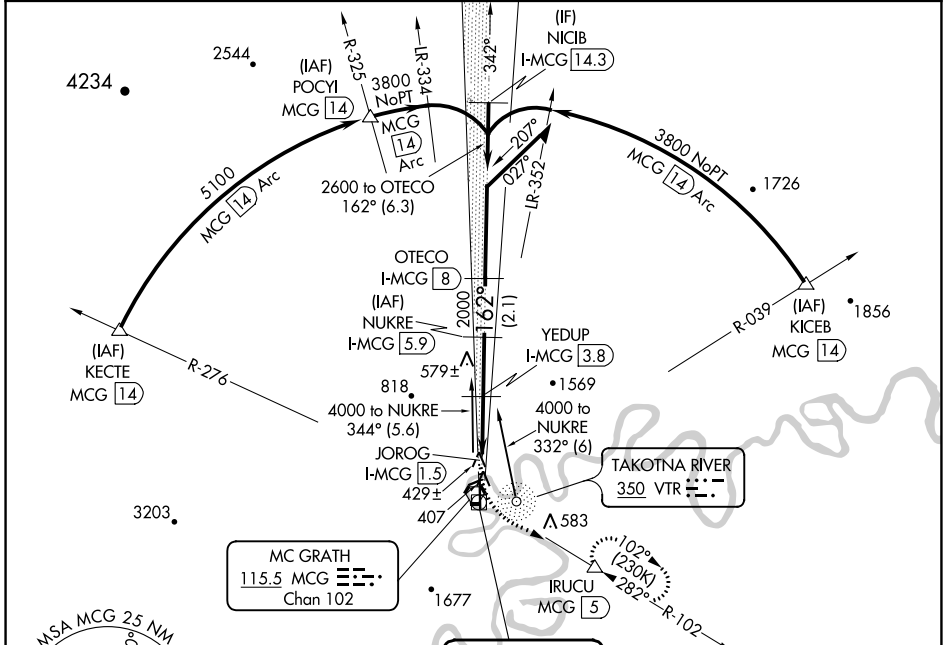
# LOC/DME RWY 16

MC GRATH (MCG)(PAMC)

**MISSED APPROACH:** Climb to 1000 then climbing left turn to 4000 via MCG VORTAC R-102 to IRUCU/MCG 5 DME and hold, continue climb-in-hold to 4000.

**Warning:** Circling NA for Cat D west of Rwy 16-34.  
-45°C

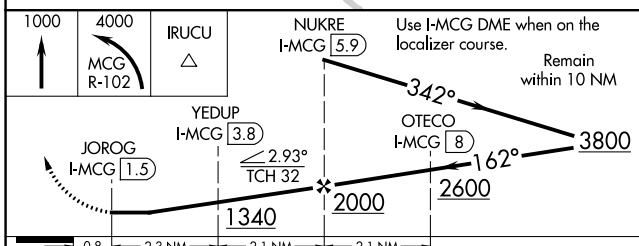
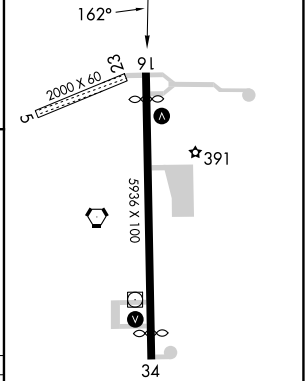
ASOS <b>135.65</b>	ANCHORAGE CENTER <b>128.1 353.8</b>	MCGRATH RADIO <b>123.6 (CTAF)</b>
-----------------------	--	--------------------------------------



MC GRATH  
115.5 MCG Chan 102

LOCALIZER 108.5  
I-MCG Chan 22  
LOC offset 2.51°

ELEV 343	<b>D</b>	TDZE 343
----------	----------	----------



CATEGORY	A	B	C	D
S-16	760-1	417 (500-1)	760-1¼	417 (500-1¼)
CIRCLING	820-1 477 (500-1)	840-1 497 (500-1)	1460-3 1117 (1200-3)	1620-3 1277 (1300-3)

MIRL Rwy 5-23 and 16-34  
REIL Rwy 16 and 34

AK, 31 OCT 2024 to 26 DEC 2024

AK, 31 OCT 2024 to 26 DEC 2024