

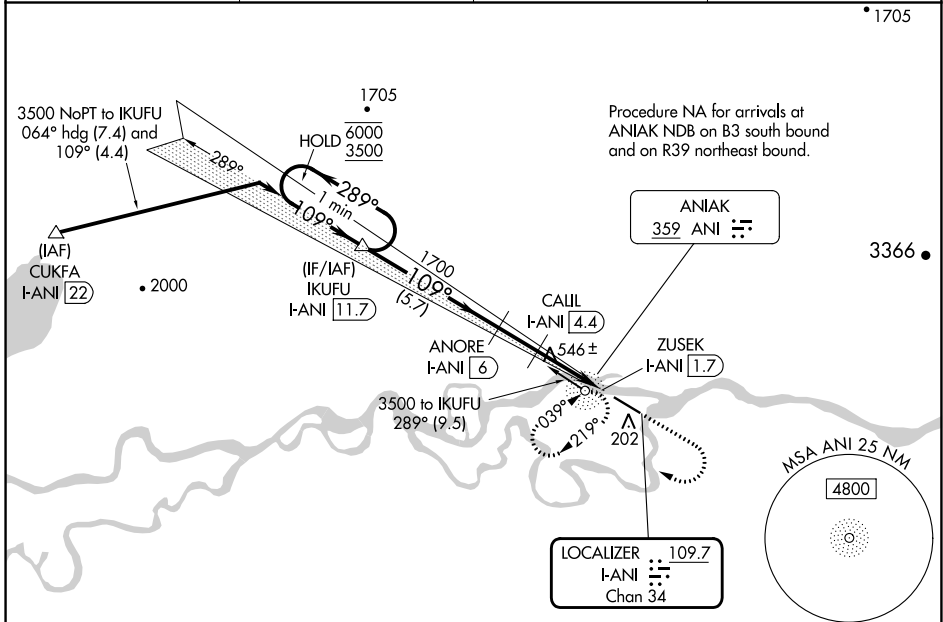
LOC/DME I-ANI <b>109.7</b> Chan <b>34</b>	APP CRS <b>109°</b>	Rwy Idg <b>5400</b> TDZE <b>97</b> Apt Elev <b>97</b>
---	------------------------	---

# ILS or LOC RWY 11

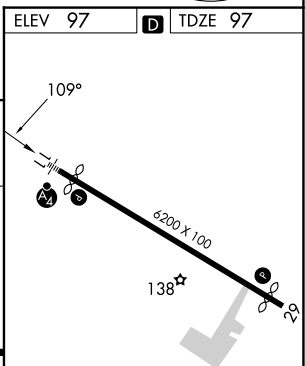
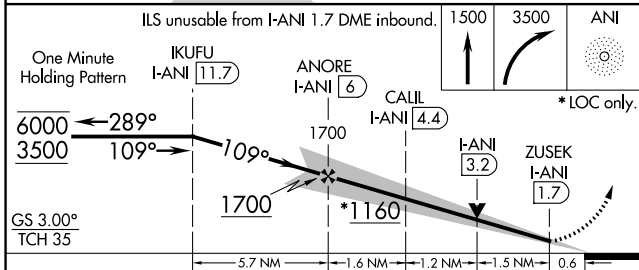
ANIAK (ANI)(PANI)

DME required.	MALSF	MISSED APPROACH: Climb to 1500 then climbing right turn to 3500 direct ANI NDB and hold, continue climb-in-hold to 3500. (ADF required)
<p>⚠ Circling NA north of Rwy 11-29. Rwy 11 helicopter visibility reduction below 3/4 SM NA. Inop table does not apply to S-ILS all Cats.</p> <p>❄ -37°C</p>		

AWOS-3P <b>124.3</b>	ANCHORAGE CENTER <b>118.15 251.05</b>	CLNC DEL <b>118.15</b>	CTAF <b>122.10</b>
-------------------------	--	---------------------------	-----------------------



ELEV 97	TDZE 97
---------	---------



CATEGORY	A	B	C	D
S-ILS 11	347-3/4 250 (300-3/4)			
S-LOC 11	800-3/4	703 (800-3/4)	800-1 3/4	703 (800-1 3/4)
CIRCLING	800-1	703 (800-1)	860-2 1/4 763 (800-2 1/4)	1200-3 1103 (1200-3)

HIRL Rwy 11-29

AK, 31 OCT 2024 to 26 DEC 2024

AK, 31 OCT 2024 to 26 DEC 2024