

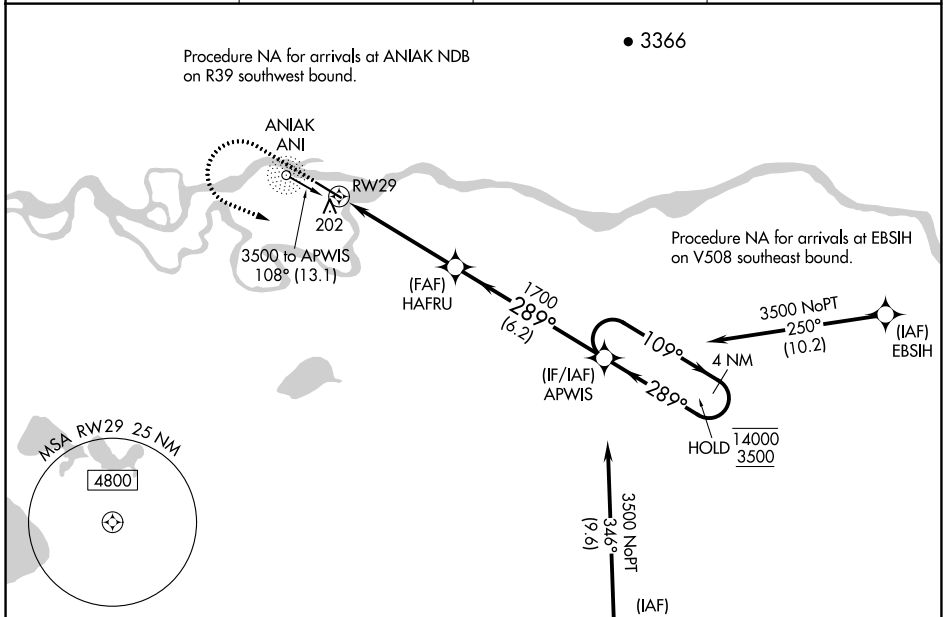
WAAS CH <b>86538</b> <b>W29A</b>	APP CRS <b>289°</b>	Rwy Idg TDZE Apt Elev	<b>5400</b> <b>97</b> <b>97</b>
--	------------------------	-----------------------------	---------------------------------------

# RNAV (GPS) RWY 29

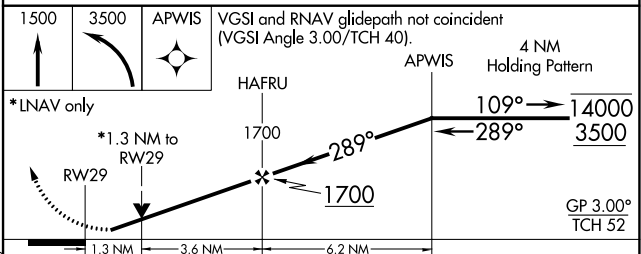
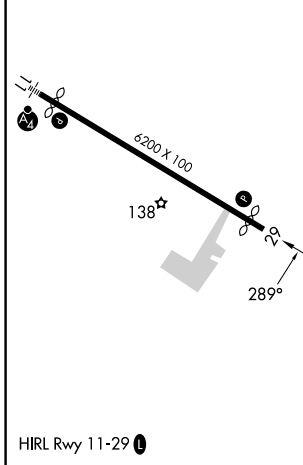
ANIAK (ANI)(PANI)

RNP APCH.	<p><b>⚠</b> Circling NA north of Rwy 11-29. Rwy 29 helicopter visibility reduction below 3/4 SM NA. For uncompensated Baro-VNAV systems, LNAV/VNAV NA below -18°C or above 54°C.</p> <p><b>❄</b> -37°C</p>	<p>MISSED APPROACH: Climb to 1500 then climbing left turn to 3500 direct APWIS and hold.</p>
-----------	--	--

AWOS-3P <b>124.3</b>	ANCHORAGE CENTER <b>118.15 251.05</b>	CLNC DEL <b>118.15</b>	CTAF <b>122.1</b>
-------------------------	--	---------------------------	----------------------



ELEV 97	<b>D</b>	TDZE 97
---------	----------	---------



CATEGORY	A	B	C	D
LPV DA	347-1		250 (300-1)	
LNAV/VNAV DA	460-1		363 (400-1)	
LNAV MDA	560-1	463 (500-1)	560-1 3/8	463 (500-1 3/8)
<b>C</b> CIRCLING	560-1 463 (500-1)	620-1 523 (600-1)	860-2 1/4 763 (800-2 1/4)	1200-3 1103 (1200-3)

AK, 31 OCT 2024 to 26 DEC 2024

AK, 31 OCT 2024 to 26 DEC 2024