

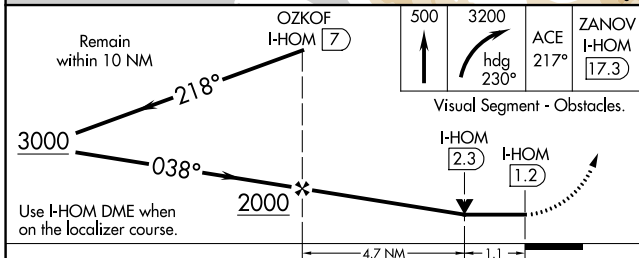
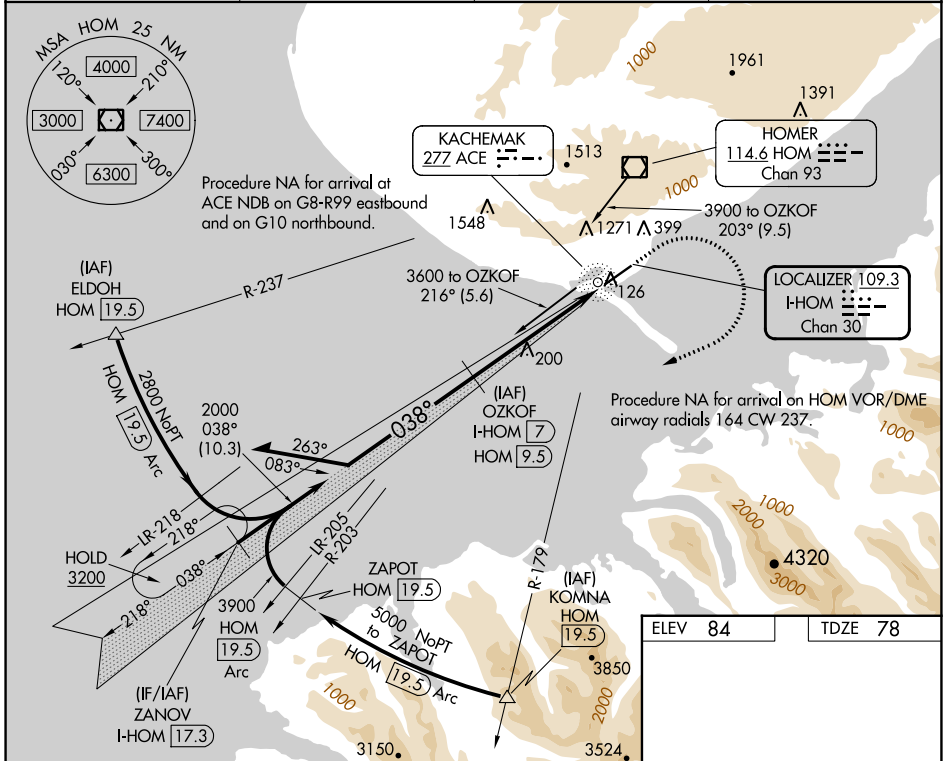
LOC/DME I-HOM 109.3 Chan 30	APP CRS 038°	Rwy Idg TDZE Apt Elev	6701 78 84
-------------------------------------------------	------------------------	-----------------------------	---------------------------------------

LOC RWY 4

HOMER (HOM)(PAHO)

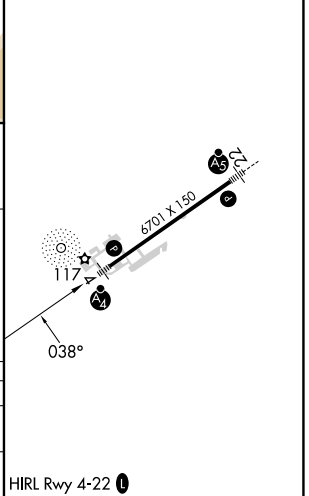
ADF or DME required for procedure entry. DME required.	MALSF 	MISSED APPROACH: Climb to 500 then climbing right turn to 3200 on heading 230° and on ACE NDB bearing 217° to ZANOV/I-HOM 17.3 DME and hold.
Circling NA northwest of Rwy 4-22. Inop table does not apply to Cats A and B. For inop ALS increase Cat C/D visibility to 1½ SM. Circling NA to waterways 6W and 24W.		

AFIS 135.65	ANCHORAGE CENTER 125.9 270.3	HOMER RADIO 123.6 (CTAF)	UNICOM 122.7 123.0 123.05
-----------------------	----------------------------------------	------------------------------------	-------------------------------------



ELEV 84	TDZE 78
---------	---------

CATEGORY	A	B	C	D
S-LOC 4	460-1 382 (400-1)			
CIRCLING	500-1 416 (500-1)	540-1 456 (500-1)	540-1½ 456 (500-1½)	760-2¼ 676 (700-2¼)



AK, 31 OCT 2024 to 26 DEC 2024

AK, 31 OCT 2024 to 26 DEC 2024