

LOC/DME I-HOM 109.3 Chan 30	APP CRS 218°	Rwy Idg TDZE Apt Elev 6701 84 84
--	------------------------	--

LOC BC RWY 22

HOMER (HOM) (PAHO)

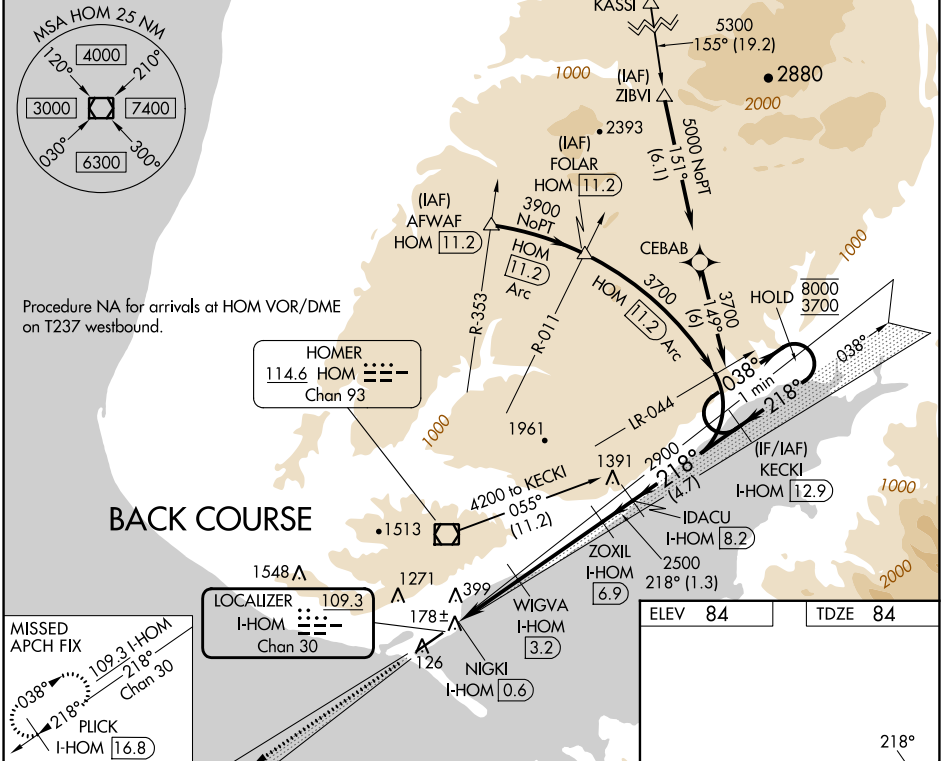
DME required. RNP APCH-GPS. From KASSI.

⚠ Inop table does not apply to S-LOC 22 Cats A and B. When Homer altimeter setting not received, procedure NA. Rwy 22 helicopter visibility reduction below 3/4 SM NA. Circling NA northwest of Rwy 4-22. Circling NA to waterways 6W and 24W. For inop ALS, increase S-LOC 22 Cat C and D visibility to 1 1/8 SM.

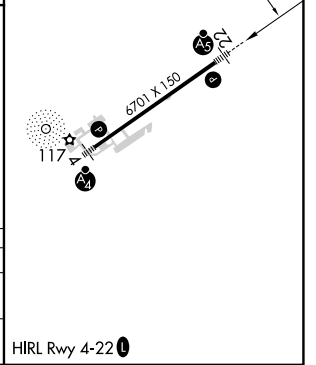
MALSR

MISSED APPROACH: Climb to 2600 on I-HOM localizer SW course 218° to PLICK/16.8 DME and hold.

AFIS 135.65	ANCHORAGE CENTER 125.9 270.3	HOMER RADIO 123.6 (CTAF) 0	UNICOM 122.7 123.0 123.05
-----------------------	--	---	-------------------------------------



2600 I-HOM SW crs 218°	PLICK I-HOM 16.8	Use I-HOM DME when on the localizer course.		KECKI I-HOM 12.9 One Minute Holding Pattern
		IDACU I-HOM 8.2		
		ZOXIL I-HOM 8.2		
		WIGVA I-HOM 6.9		
		NIGKI I-HOM 0.6		
		1260	2500	2900
		3.20°	TCH 55	
		0.7	2.6 NM	3.7 NM
		1.3 NM	4.7 NM	
CATEGORY	A	B	C	D
S-LOC 22	500-1 416 (500-1)			
CIRCLING	500-1 416 (500-1)	540-1 456 (500-1)	540-1 1/2 456 (500-1 1/2)	700-2 616 (700-2)



AK, 31 OCT 2024 to 26 DEC 2024

AK, 31 OCT 2024 to 26 DEC 2024