

KING SALMON, ALASKA

HI-VOR or TACAN Z RWY 12

VORTAC AKN 112.8 Chan 75	APCH CRS 116°	Rwy ldg TDZE Arpt Elev 8501 62 73
--	-------------------------	---

[USAF]

KING SALMON (AKN) (PAKN)

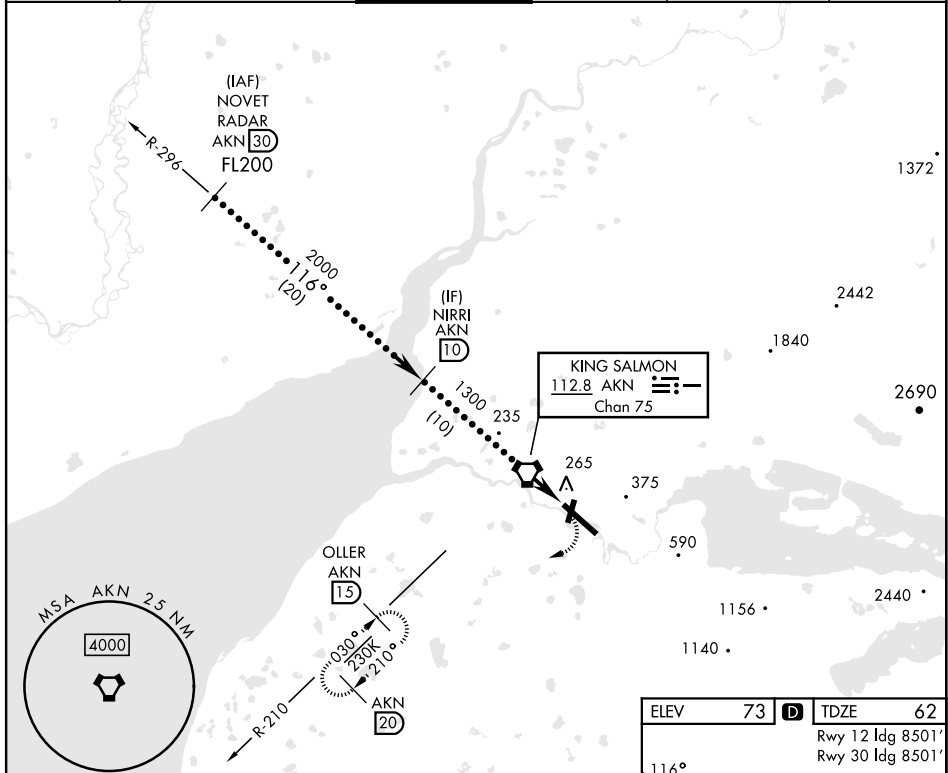
DME required. RADAR required for procedure entry.

▽ *When ALS inop, increase vis to 1½ miles.
When control tower closed, increase RVR to 50.
33 -31° C

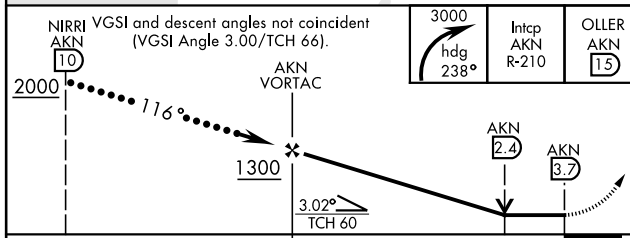


MISSED APPROACH: Climbing right turn to 3000 on heading 238° and AKN VORTAC R-210 to OLLER/15 DME and hold.

ATIS 128.8	ANCHORAGE CENTER 124.8 354.0	TOWER ★ 118.3 279.5	GND CON 121.9	CTAF 121.90 352.05	UNICOM 122.95
----------------------	--	-------------------------------	-------------------------	------------------------------	-------------------------



EMERG SAFE ALT 100 NM 9900



ELEV	73	TDZE	62
Rwy 12 ldg 8501'		Rwy 30 ldg 8501'	

CATEGORY	C	D	E
S-12*	520-45	458	(500-7%)
CIRCLING	580-1½	900-2¾	960-3
	507 (600-1½)	827 (900-2¾)	887 (900-3)

KING SALMON, ALASKA

58°41'N-156°39'W

KING SALMON (AKN) (PAKN)

Amtd 5 22APR21

HI-VOR or TACAN Z RWY 12

AK, 31 OCT 2024 to 26 DEC 2024

AK, 31 OCT 2024 to 26 DEC 2024