

KING SALMON, ALASKA

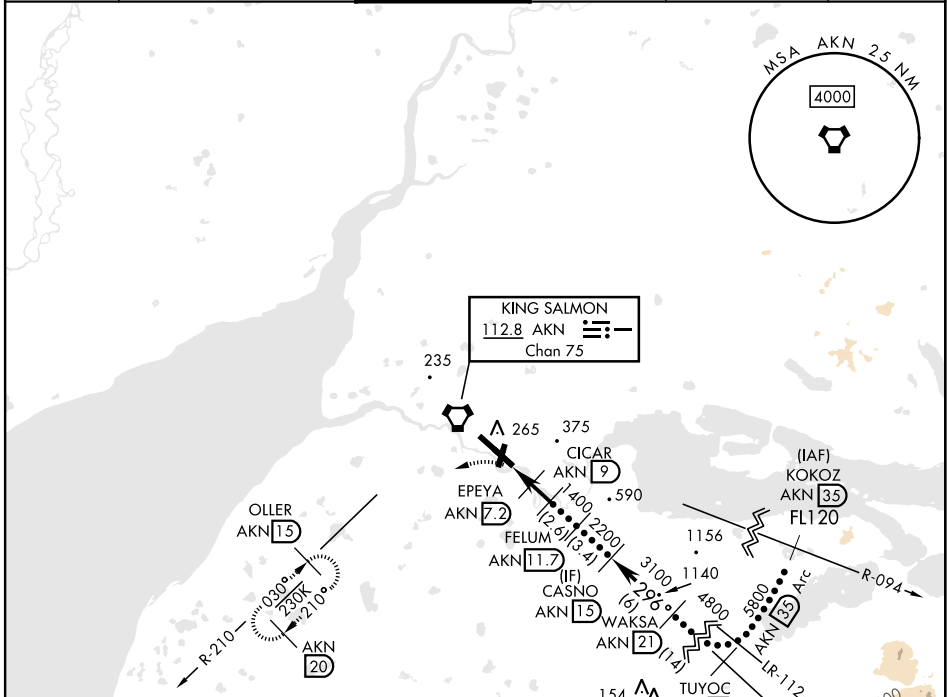
# HI-VOR Z or TACAN Z RWY 30

VORTAC AKN <b>112.8</b> Chan <b>75</b>	APCH CRS <b>296°</b>	Rwy Idg TDZE <b>73</b> Arpt Elev <b>73</b>	[USAF]	KING SALMON (AKN) (PAKN)
--	-------------------------	--	--------	--------------------------

DME required. **33**-31° C

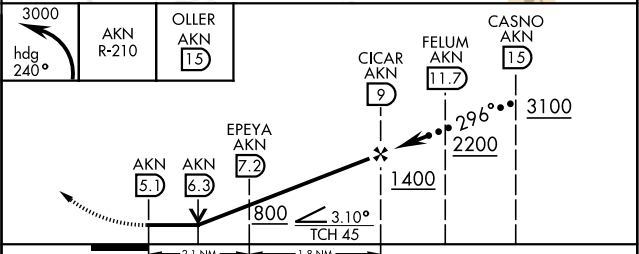
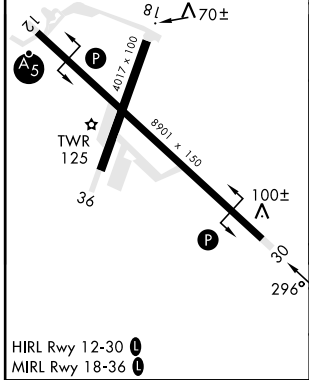
MISSED APPROACH: Climbing left turn to 3000 on heading 240° and on AKN VORTAC R-210 to OLLER/ 15 DME and hold.

ATIS <b>128.8</b>	ANCHORAGE CENTER <b>124.8 354.0</b>	TOWER ★ <b>118.3 279.5</b>	GND CON <b>121.9</b>	CTAF <b>121.9 352.05</b>	UNICOM <b>122.95</b>
----------------------	--	-------------------------------	-------------------------	-----------------------------	-------------------------



EMERG SAFE ALT 100 NM 9900

ELEV <b>73</b>	<b>D</b>	TDZE <b>73</b>
Rwy 12 Idg 8501'		
Rwy 30 Idg 8501'		



CATEGORY	C	D	E
S-30	480-1½	407	(500-1½)
<b>C</b> CIRCLING	580-1½ 507 (600-1½)	900-2¾ 827 (900-2¾)	960-3 887 (900-3)

KING SALMON, ALASKA      58°41'N-156°39'W      KING SALMON (AKN) (PAKN)

Amdt 6 03NOV22

# HI-VOR Z or TACAN Z RWY 30

AK, 31 OCT 2024 to 26 DEC 2024

AK, 31 OCT 2024 to 26 DEC 2024