

VORTAC AKN 112.8 Chan 75	APP CRS 296°	Rwy Idg TDZE Apt Elev 8501 73 73
---------------------------------------	------------------------	--

VOR Y or TACAN Y RWY 30

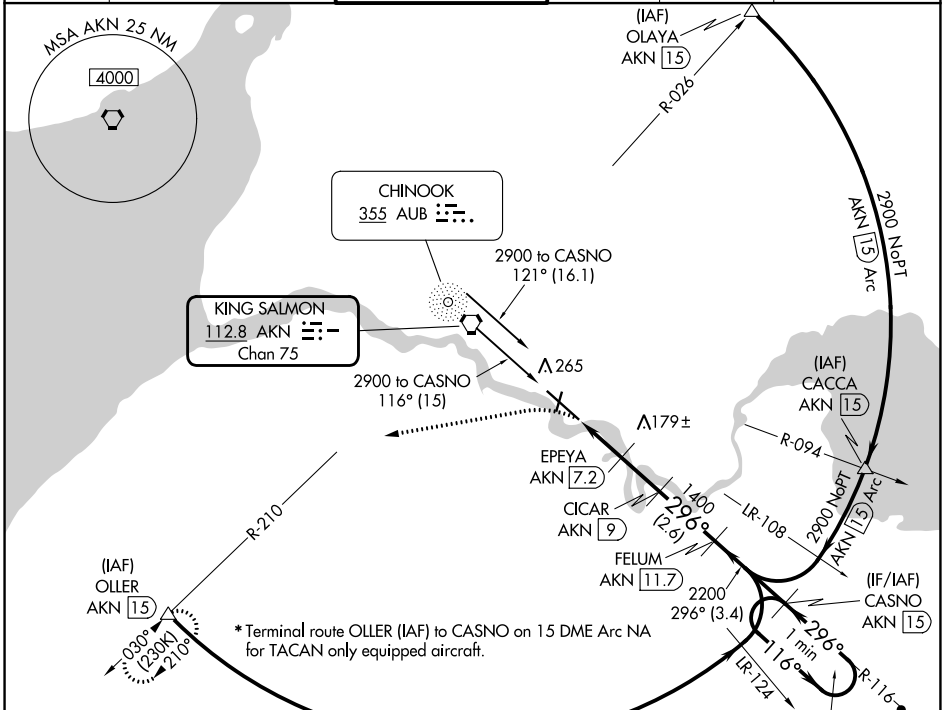
KING SALMON (AKN)(PAKN)

DME required.

T
A

MISSED APPROACH: Climbing left turn to 3000 on heading 240° and on AKN VORTAC R-210 to OLLER/15 DME and hold.

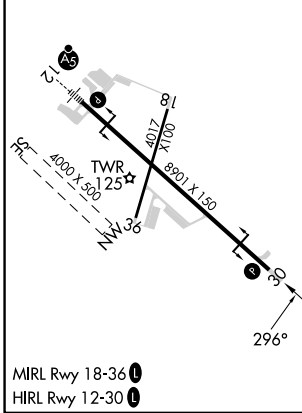
ATIS 128.8	ANCHORAGE CENTER 124.8 354.0	KING SALMON TOWER* 118.3 279.5	GND CON 121.9	UNICOM 122.95	CTAF 121.9 352.05
----------------------	--	--	-------------------------	-------------------------	-----------------------------



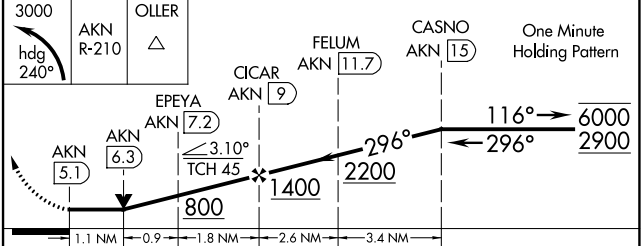
AK, 31 OCT 2024 to 26 DEC 2024

AK, 31 OCT 2024 to 26 DEC 2024

ELEV 73	D	TDZE 73
---------	----------	---------



*2900 NoPT AKN 15 Arc



CATEGORY	A	B	C	D	E
S-30	480-1	407 (500-1)	480-1½ 407 (500-1½)		
C CIRCLING	580-1	507 (600-1)	580-1½	900-2¾	960-3
			507 (600-1½)	827 (900-2¾)	887 (900-3)