

VOR/DME ODK <b>117.1</b> Chan <b>118</b>	APP CRS <b>237°</b>	Rwy Idg <b>7534</b> TDZE <b>32</b> Apt Elev <b>79</b>
--	------------------------	---

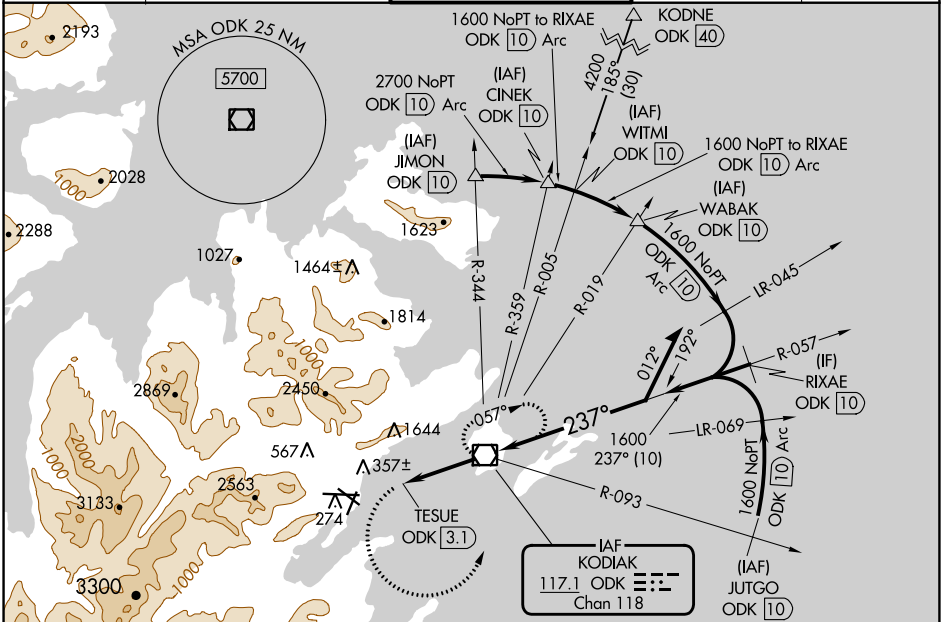
# VOR RWY 26

KODIAK (ADQ)(PADQ)

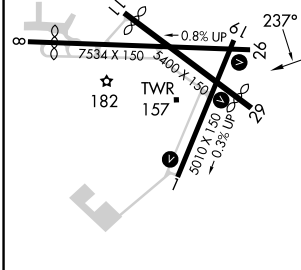
**⚠** Circling NA north of Rwy 8-26 and west of Rwy 1-19.  
**⚠** Circling Rwy 1 NA at night. Circling NA to Rwys 8, 11 and 19.  
 Rapidly rising terrain north, west, and south of airport.

**MISSED APPROACH:** Climbing left turn to 3700 on heading 079° then left turn direct ODK VOR/DME and hold.

ATIS <b>134.45</b>	ANCHORAGE CENTER <b>125.1 281.4</b>	KODIAK TOWER* <b>119.8 (CTAF) 239.0</b>	GND CON <b>121.9</b>	UNICOM <b>122.8</b>
-----------------------	--	--	-------------------------	------------------------

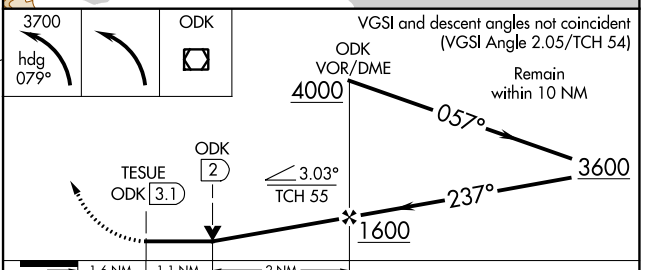


ELEV 79	<b>D</b>	TDZE 32
---------	----------	---------



REIL Rwys 1 and 26  
 HIRL Rwys 1-19, 8-26, and 11-29  
 FAF to MAP 3.1 NM

Knots	60	90	120	150	180
Min:Sec	3:06	2:04	1:33	1:14	1:02



CATEGORY	A	B	C	D
S-26	660-2 628 (600-2)			
<b>C</b> CIRCLING	660-2 581 (600-2)	720-2 641 (700-2)	1140-3 1061 (1100-3)	NA

AK, 31 OCT 2024 to 26 DEC 2024

AK, 31 OCT 2024 to 26 DEC 2024