

VORTAC CDB	APP CRS	Rwy Idg	10179
112.6	145°	TDZE	75
Chan 73		Apt Elev	100

VOR RWY 15

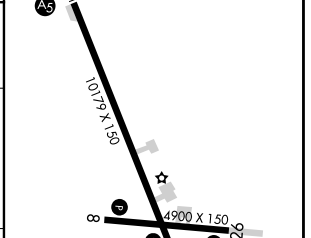
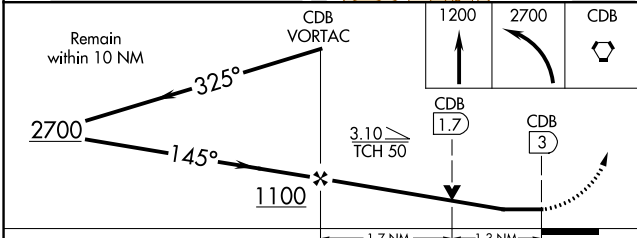
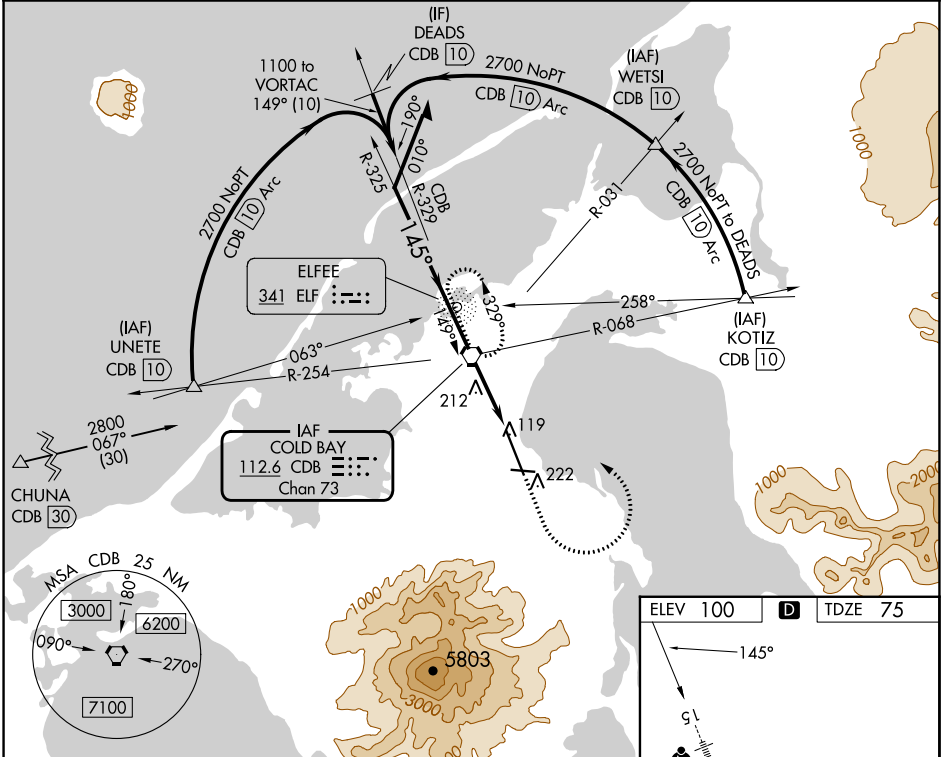
COLD BAY (CDB) (PACD)

DME required.

⚠ Circling NA for Cat A southwest of Rwy 15-33 at night.
DME values will decrease then increase prior to reaching missed approach point. For inop ALS, increase S-15 Cats C and D visibility to RVR 6000. Circling NA for Cats B/C/D southwest of Rwy 15-33

MALSR
 MISSED APPROACH: Climb to 1200 then climbing left turn to 2700 direct CDB VORTAC and hold; continue climb-in-hold to 2700.

ASOS 135.75	ANCHORAGE CENTER 118.5 278.3	COLD BAY RADIO★ 123.6 (CTAF)
-----------------------	--	--



CATEGORY	A	B	C	D
S-15	480/24	405 (400-½)	480/40	405 (400-¾)
C CIRCLING	540-1 440 (500-1)	560-1 460 (500-1)	560-1½ 460 (500-1½)	860-2½ 760 (800-2½)

ELEV 100 **D** TDZE 75

HIRL all Rwy's

AK, 31 OCT 2024 to 26 DEC 2024

AK, 31 OCT 2024 to 26 DEC 2024